

Remote Sensing in Official Statistics

X Ogólnopolska Konferencja Naukowa
im. Profesora Zbigniewa Czerwińskiego

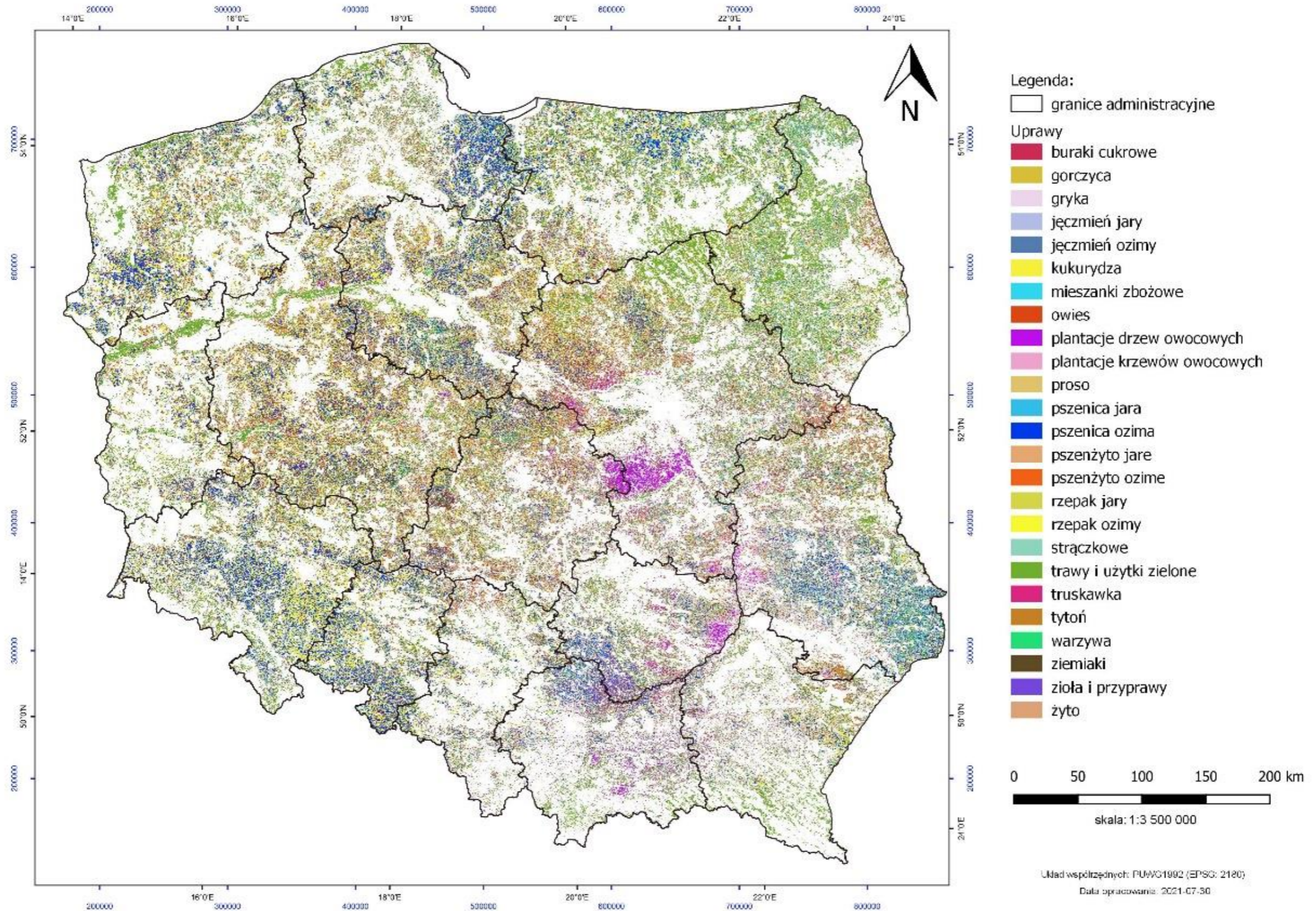
Matematyka i informatyka na usługach ekonomii

Dominik A. Rozkrut

Satmirol project (GOSPOSTRATEG)

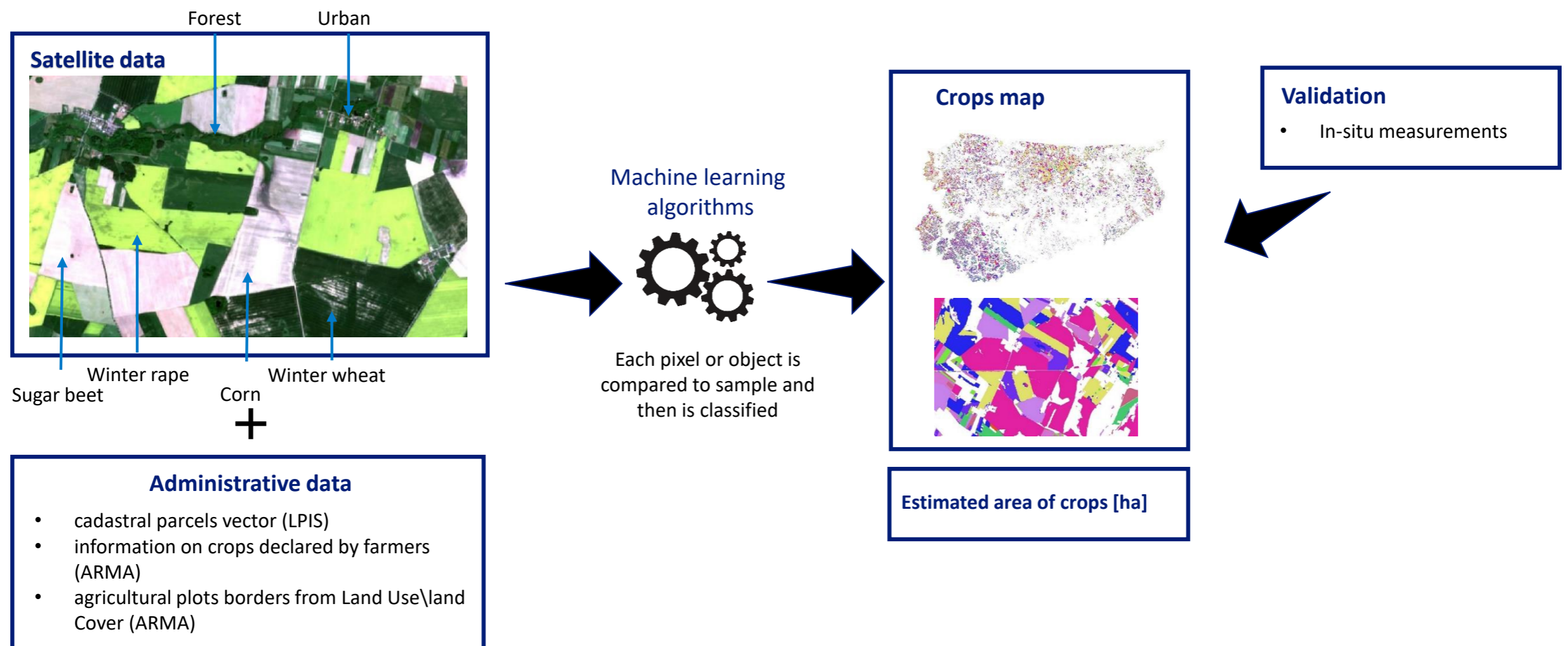
- Identification improvement and monitoring of agricultural crops
- Enhancement of methods to assess the impact of extreme events on crop conditions
- Time span
 - 2019 – 2021
- Participants
 - Statistics Poland,
Space Research Centre of Polish Academies of Sciences (CBK)
Institute of Geodesy and Cartography

Crop estimates, 2021

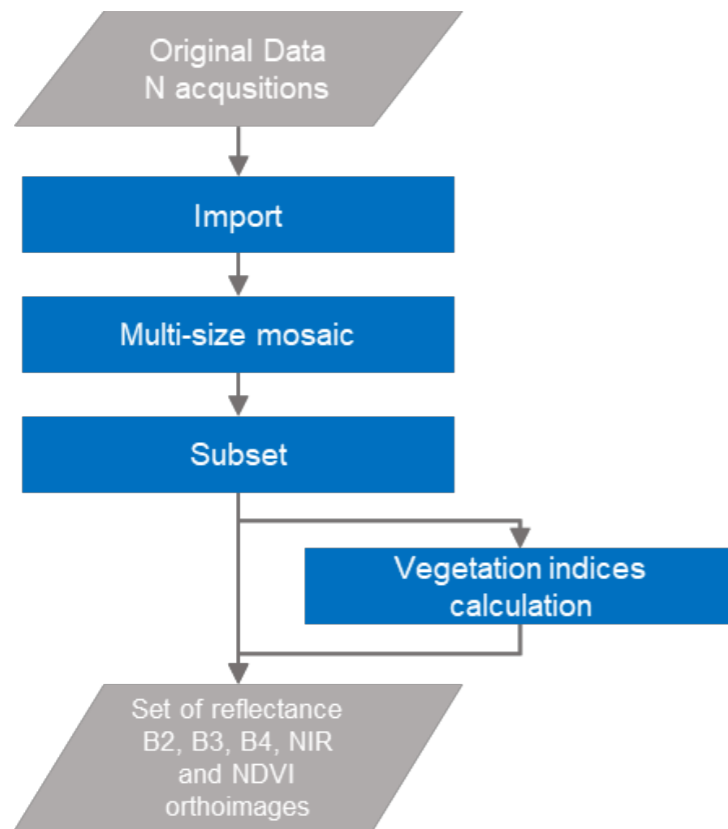


Case study

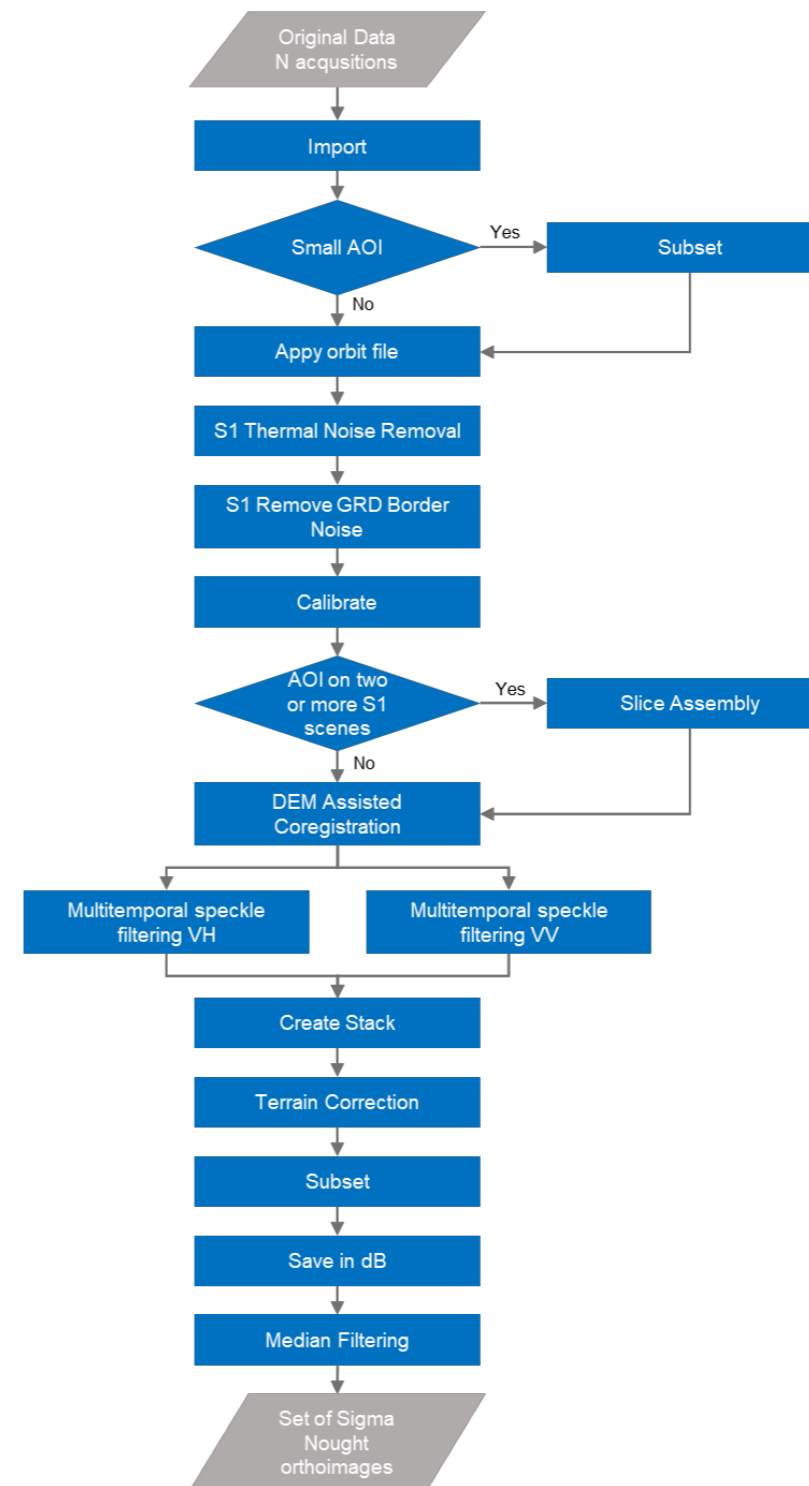
- Goal → use Sentinel 1 and Sentinel-2 satellites for agricultural crops mapping and area estimates in Northern Europe conditions.



Satellite data preparation



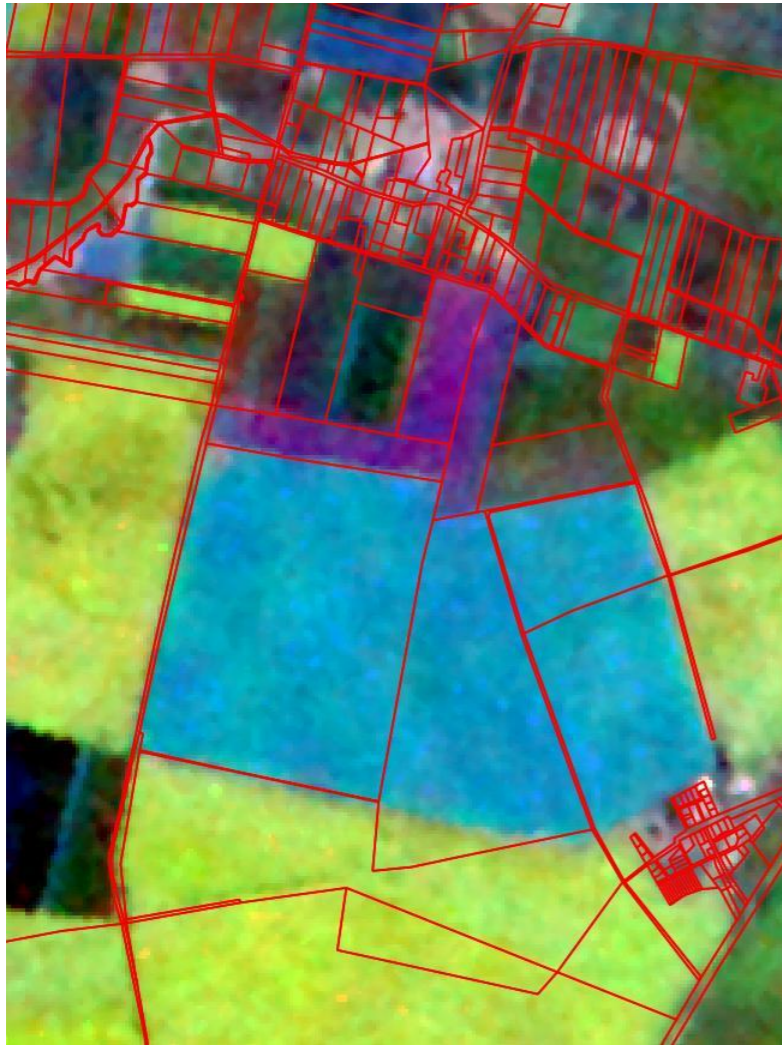
Pre-processing scheme of Sentinel-2 data



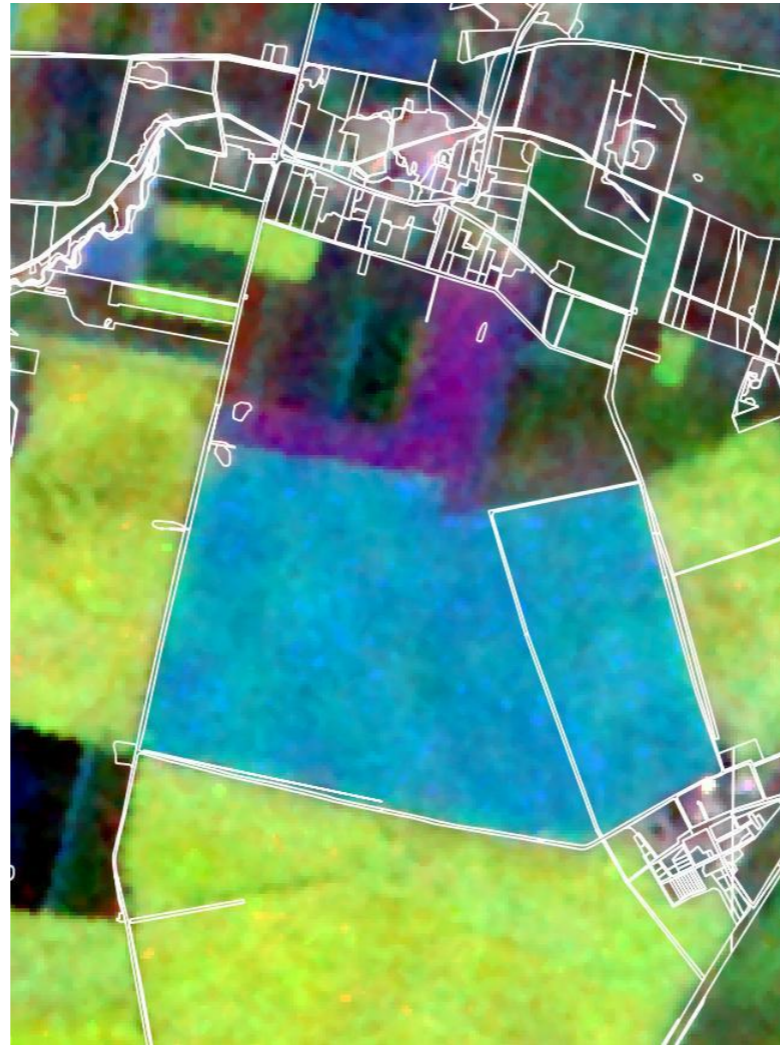
Pre-processing scheme of Sentinel-1 data

Administrative geodata preparation

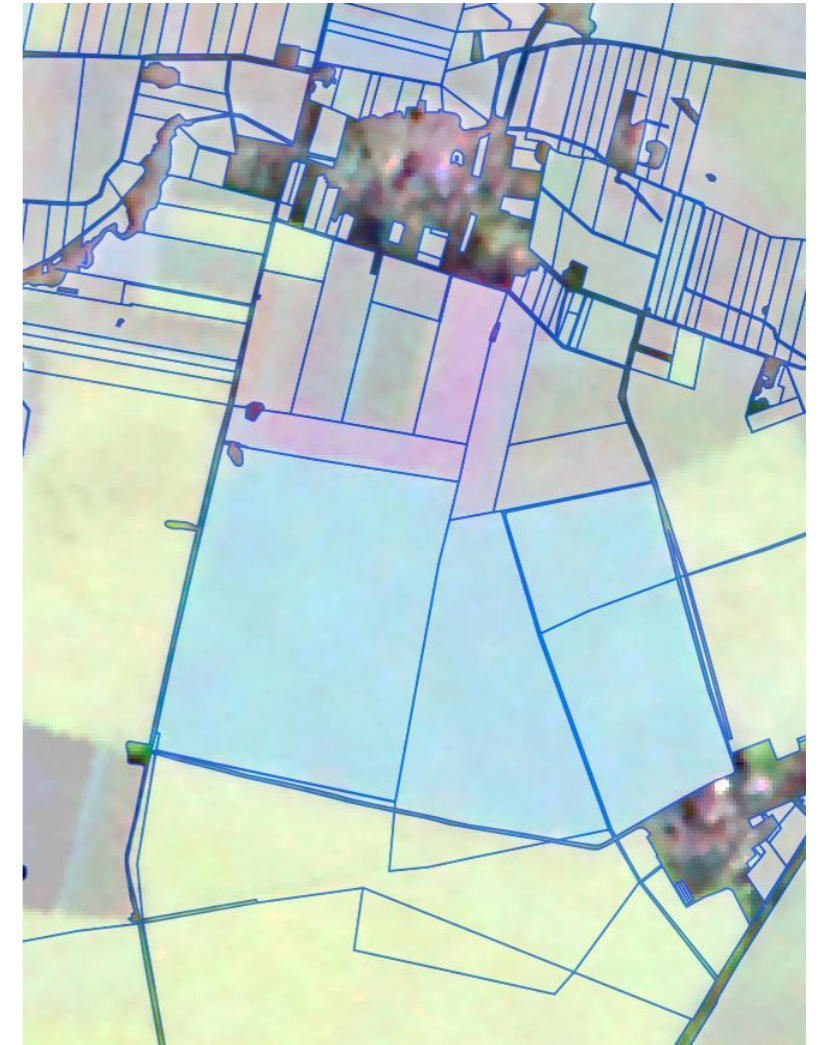
- Task → exclude non agri area



Cadastral parcels (LPIS)



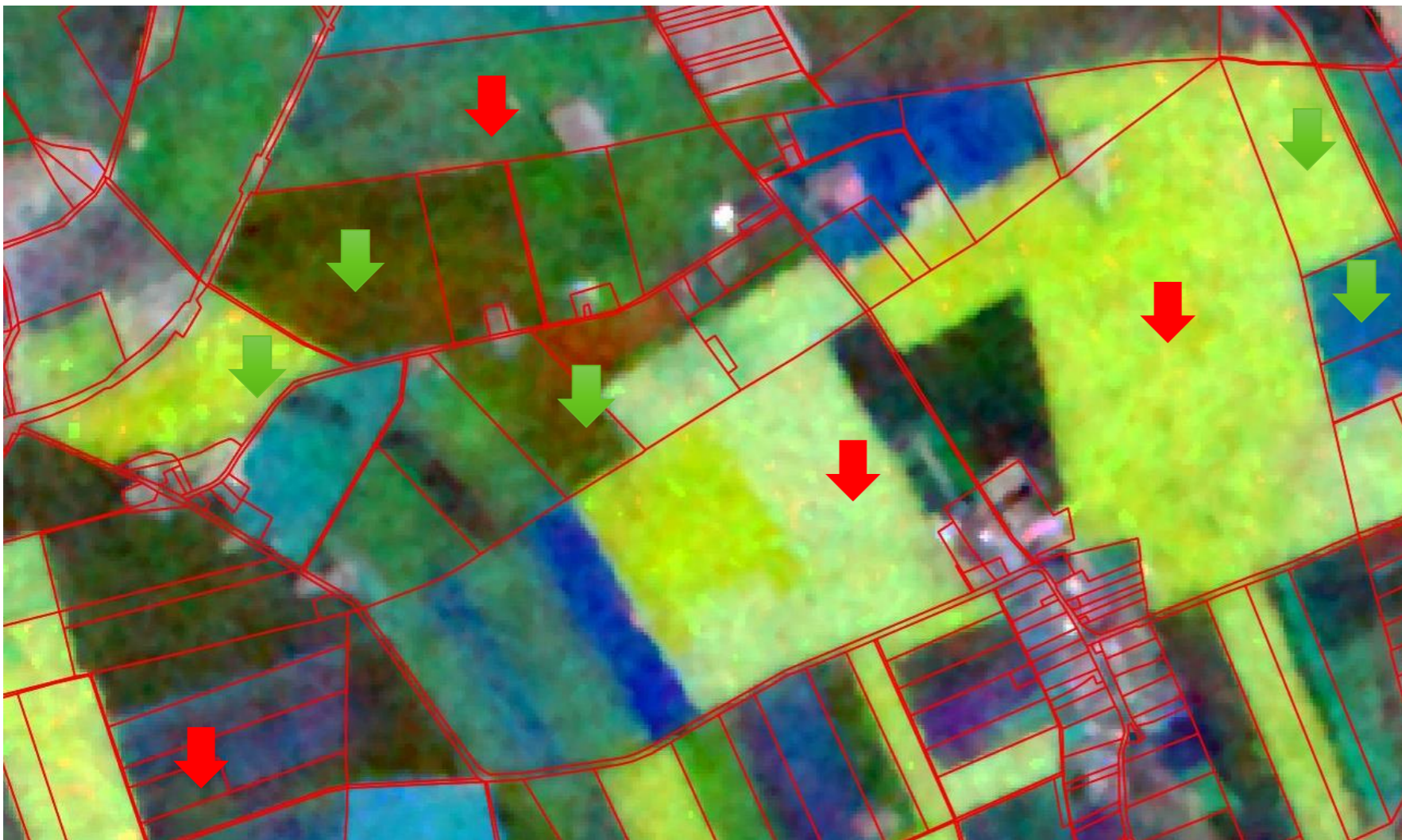
Land Use and Land Cover (ARMA)



Joined cadastral parcels & Land Use and Land Cover

Administrative geodata preparation

- Task → choose representative parcels / samples



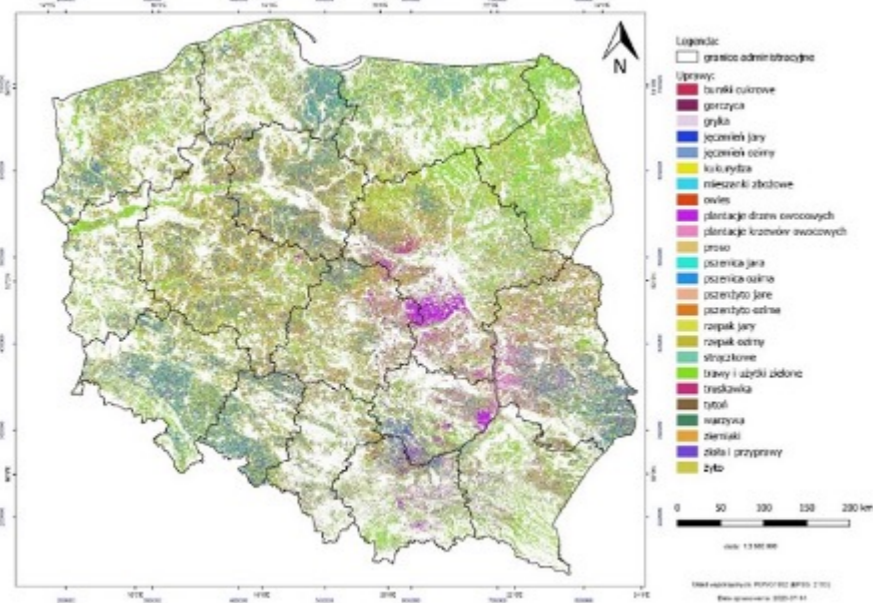
Object-based image classification using ML

- First step - segmentation (2 levels)
 - Segmentation within agriculture area based on cadastral parcels (left); Segmentation based of image features (right)
- Second step – object-based image classification using ML

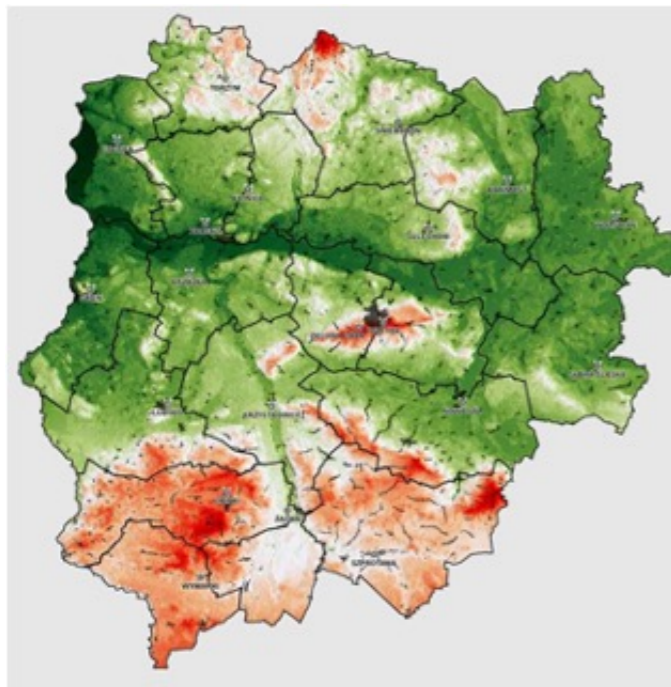


Remote sensing in Statistics Poland

Agriculture (crop maps, vegetation index harvest forecasts, droughts)



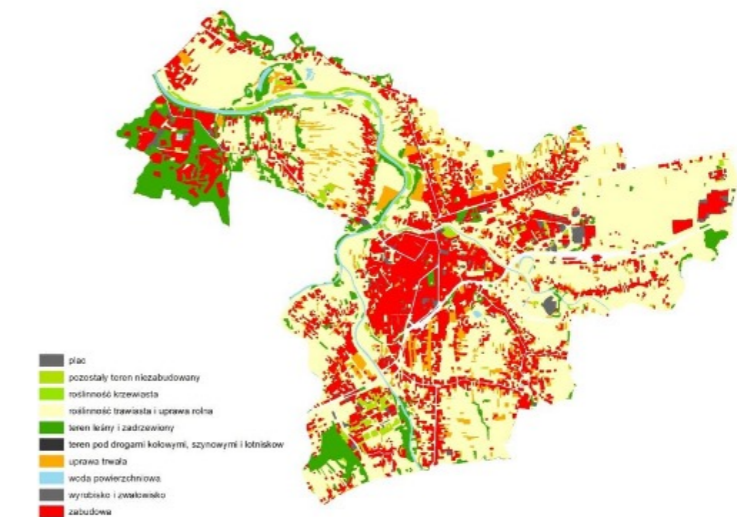
Urban areas (buildings, impervious areas, spatial planning concept)



Forestry (forest cover indicator, species classification, fires, felling, windbreaks)

Environment (air pollution, ground surface temperature, quality of green areas)

Land cover (status quo, changes)



Experimental work - photovoltaics

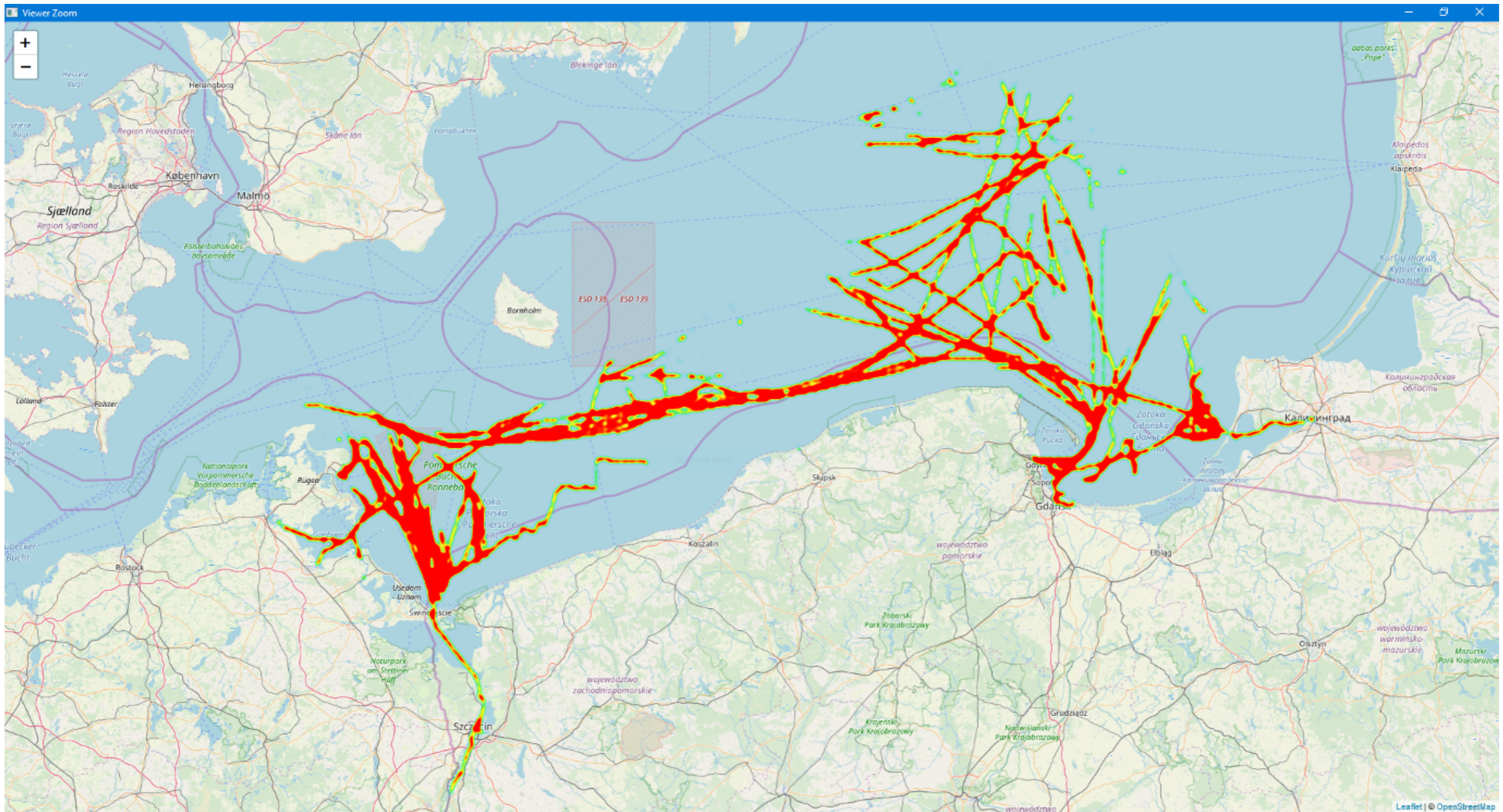


- Aerial photography use for identification of solar panels and collectors installed on roofs
- Increased interest in RES due to climate change, rising energy prices and the financing possibility from the National Fund for Environmental Protection and Water Management

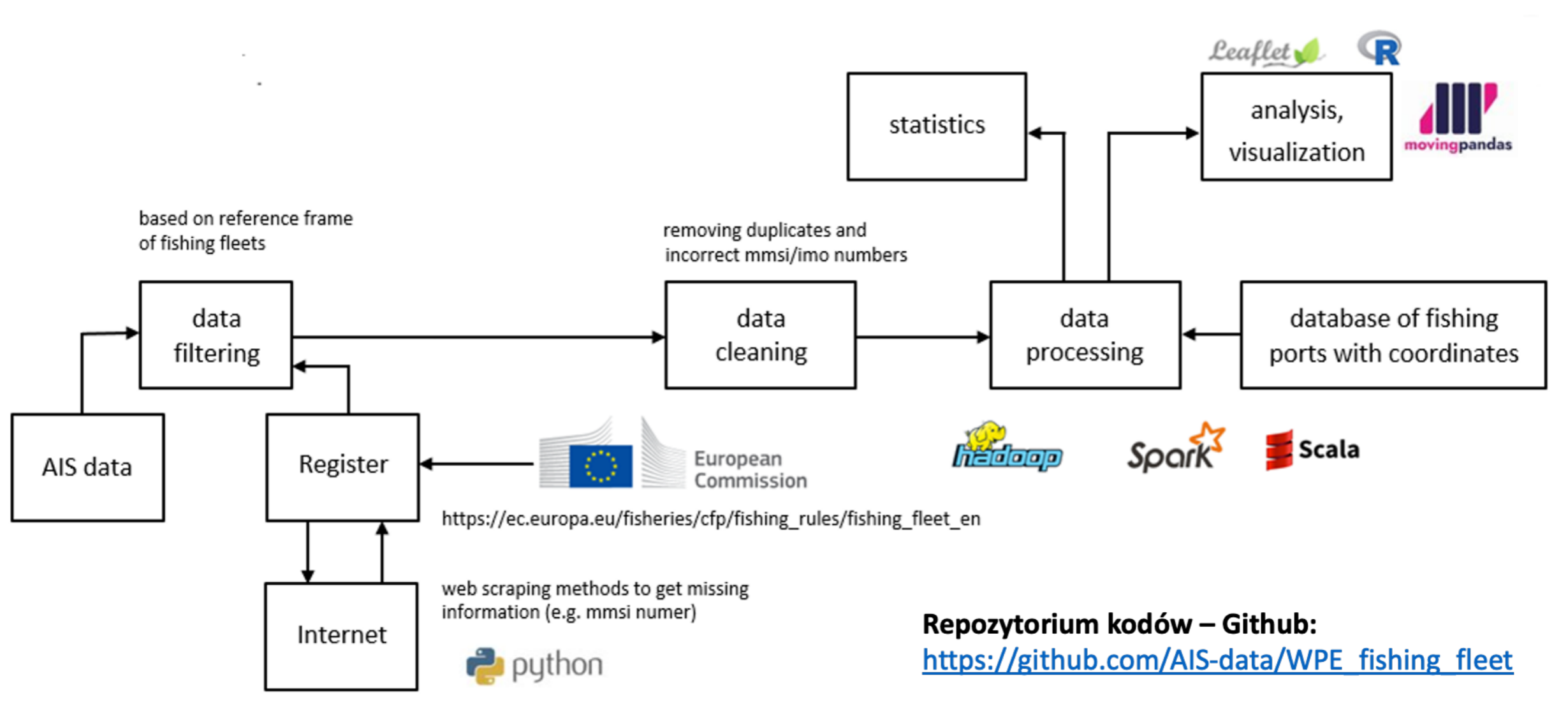
Advantages of remote sensing

Feature	Remote sensing data	Field data
Costs	✓	✗
Execution speed	✓	✗
Data availability	✓	✓ ✗
Accuracy	✓ ✗	✓ ✗
Labour outlays	✓	✗
Independence from weather conditions	✓ ✗	✗
Digitalization	✓	✗

AIS



Fishing fleet statistics workflow



Thank you

for your attention!