

SURVEY BRIEF

Agricultural season 2024–25

CÔTE D'IVOIRE



©FAO / Candida Villa-Lobos

Through its agricultural survey programme, Côte d'Ivoire aims to develop a permanent and integrated system for collecting and processing agricultural statistics, ensuring the production of reliable and comparable data. These statistics play a key role in informing the design, implementation, monitoring, and evaluation of agricultural, rural development, and food security policies.

The 2024-25 agricultural survey (*Enquête Agricole Annuelle, EAA*), recently published, makes it possible to construct a robust set of national indicators to inform agricultural policies and development strategies. This progress reflects the efforts of the Government of Côte d'Ivoire, through the Ministère de l'Agriculture, du Développement Rural et des Productions Vivrières, with technical support from the 50x2030 Initiative.

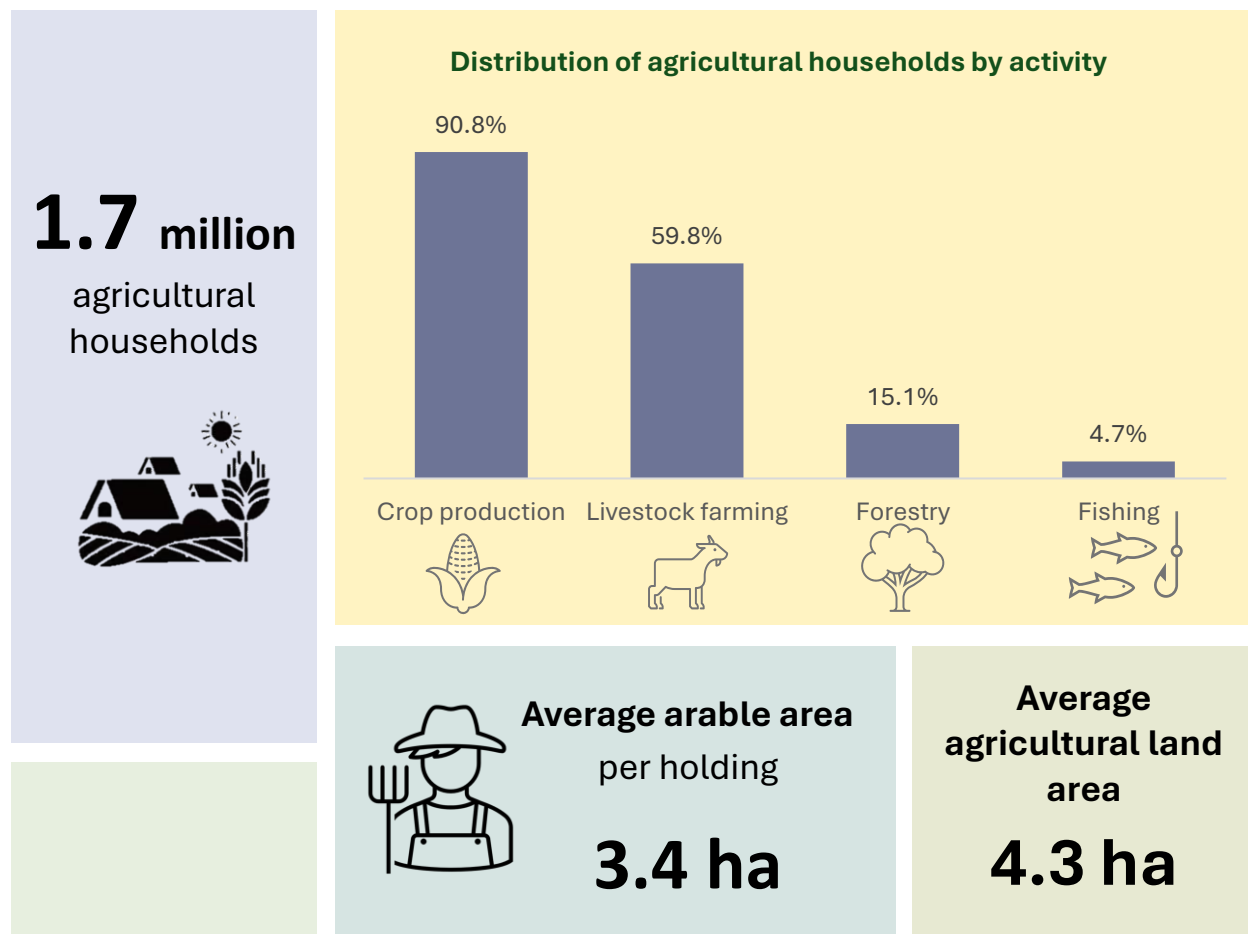
Key features

This note provides key insights on agricultural households in Côte d'Ivoire during the agricultural season 2024-25. It presents key indicators on agricultural land, crop output, livestock rearing and input use. The agricultural survey report (*Ministère de l'Agriculture, du Développement Rural et des Productions Vivrières, 2026*) offers more detailed indicators. A technical annex at the end of this document provides further details on the definitions, sources and assumptions used.

Key characteristics of agricultural holdings

Côte d'Ivoire had an estimated 1.7 million agricultural households during the 2024-25 agricultural season. Crop production was by far the most widespread activity, practiced by 90.8 percent of these households (roughly 1.6 million), followed by livestock farming at 59.8 percent. Forestry (forest product exploitation) and fishing also contributed to agricultural household economies, although they were less widespread (15.1 percent and 4.7 percent of households, respectively). Aquaculture, while present, remained marginal at just 0.5 percent of households.

On average, agricultural households engaged in crop production use 4.3 hectares (ha) of agricultural land, of which 3.4 ha are arable.

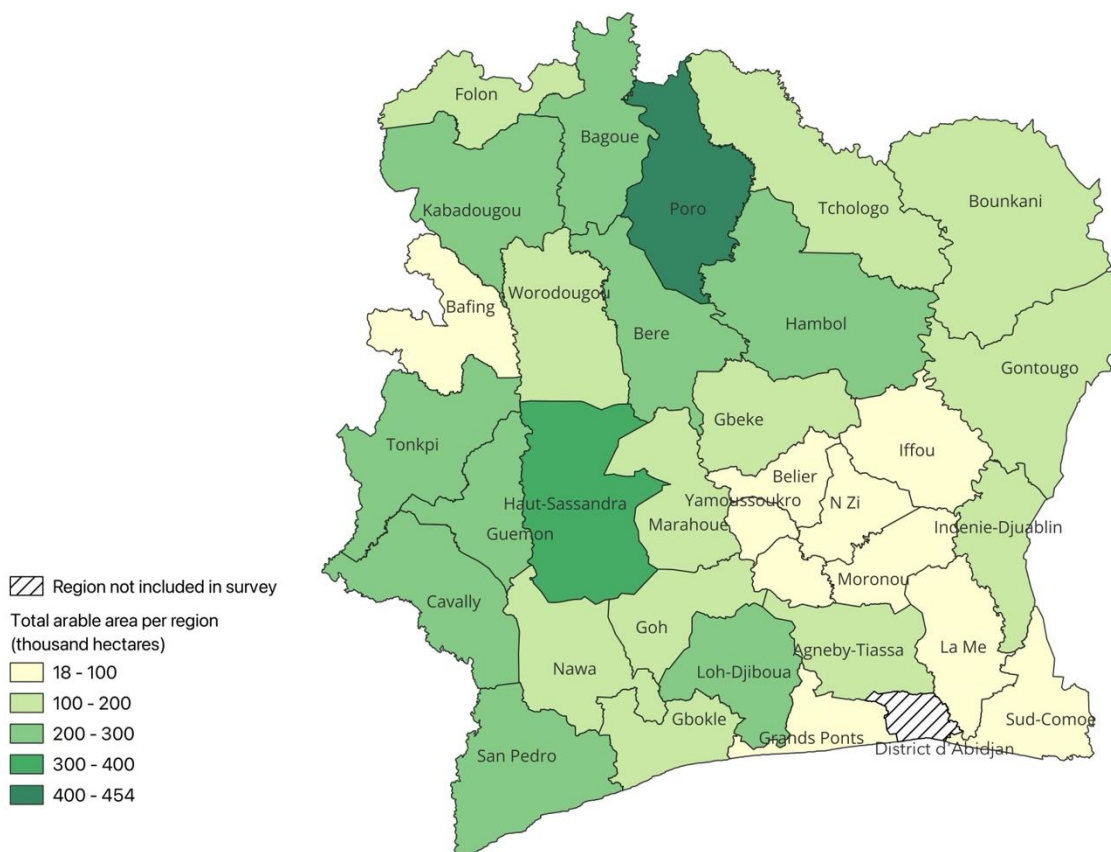


Note: Average agricultural land area refers to agricultural land area used by agricultural households engaged in crop production. See the technical annex for further details.

Arable area by region, distribution of agricultural households and average size

Of the total 6.8 million hectares classified as agricultural area, approximately 5.4 million hectares, or 80 percent, are arable. The regions with the largest arable areas are Poro (454 063 ha), Haut-Sassandra (360 614 ha) and Tonkpi (285 670 ha), which together account for 21 percent of the country's total arable land.

Total arable area per region

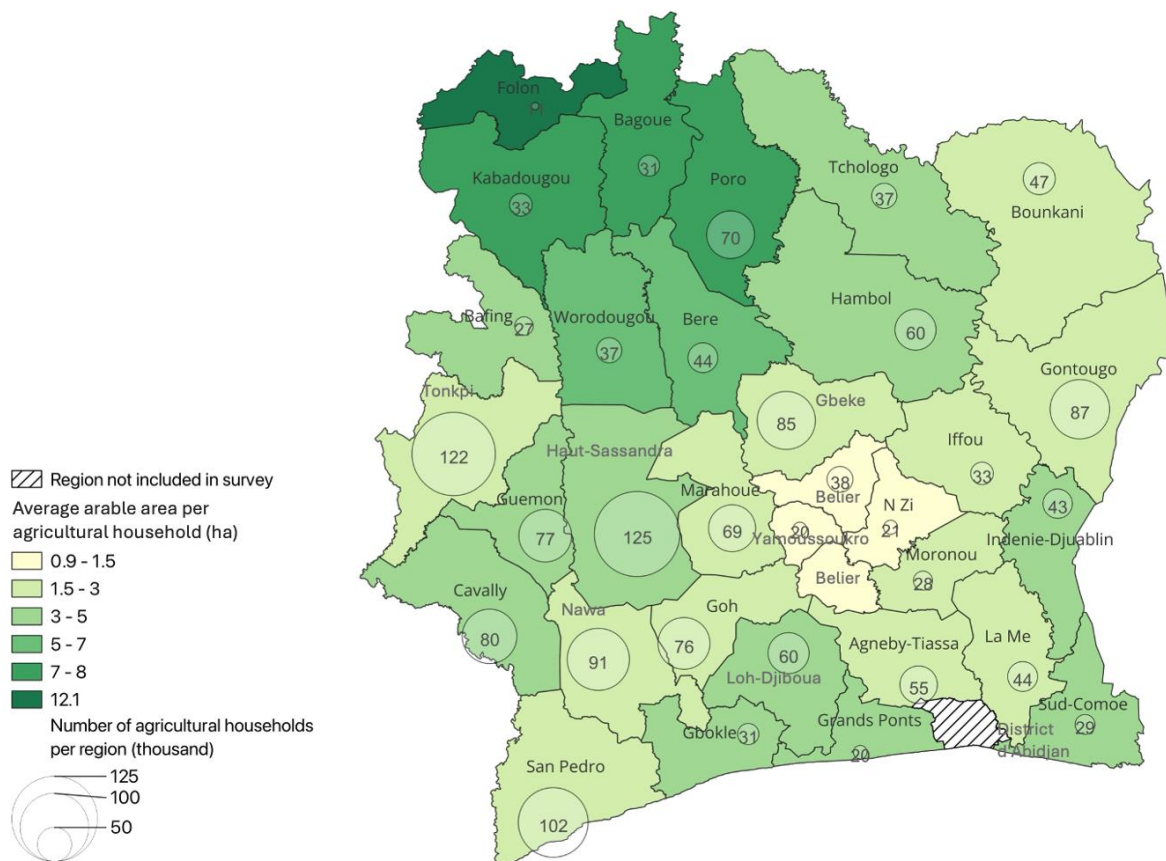


Note 1: Refer to the disclaimer on page 11 for the names and boundaries used in this map. **Note 2:** The District of Abidjan, a highly urbanized area, is excluded from the geographical scope of the survey. **Note 3:** See the technical annex for details on total arable area.

Source: Author's own elaboration, based on EAA 2024-25 survey report (Ministère de l'Agriculture, du Développement Rural et des Productions Vivrières, 2026). <https://agriculture.gouv.ci/publications/sous-categorie/12>

Agricultural households are concentrated in the southwestern regions, where holdings tend to be medium-sized, with their average arable areas ranging from 2 to 5 hectares, depending on the region. The northwestern areas, by contrast, have fewer agricultural households, but these tend to be larger, with average arable areas ranging from 7 to 12 hectares. Haut-Sassandra and Tonkpi have the highest concentrations of agricultural households, with approximately 125 470 and 122 284 households, respectively.

Average arable area per agricultural household and agricultural households per region



Note 1: Refer to the disclaimer on page 11 for the names and boundaries used in this map. **Note 2:** Average arable area refers to agricultural households engaged in crop production. See technical annex for further details.

Source: Author's own elaboration, based on EEA 2024-25 survey report (Ministère de l'Agriculture, du Développement Rural et des Productions Vivrières, 2026). <https://agriculture.gouv.ci/publications/sous-categorie/12>

Crop production

The three main crops in production volume are cassava (7.4 million tonnes [Mt]), yam (7.0 Mt), and plantain (2.3 Mt). The main cereal crops in volume are maize and rice, with 1.83 Mt and 1.81 Mt, respectively. Cassava recorded high production levels in the southern regions of San Pedro (551 099 t), Sud-Comoe (494 941 t), and La Me (434 331 t). The main vegetable crops in volume are tomatoes (478 007 t), eggplants (219 269 t) and peppers (142 119 t). Okra, carrots, cucumbers, and cabbage are also cultivated, although in smaller quantities.

Cash crops play a major role as a source of income for agricultural households in Côte d'Ivoire. Cocoa is the country's most important cash crop, with production reaching 1.7 Mt, followed by oil palm and rubber. Cashew nuts, cotton, and coffee are also significant cash crops. Geographically, cash crops are predominantly cultivated in the southwestern part of the country - particularly in the regions of Nawa, San-Pedro and Haut-Sassandra. Cocoa is primarily grown in the regions of Guemon, Nawa and Haut-Sassandra. Oil palm records very high production volumes in the coastal regions (San-Pedro, Loh-Djiboua and Sud-Comoe).

Production of main crops

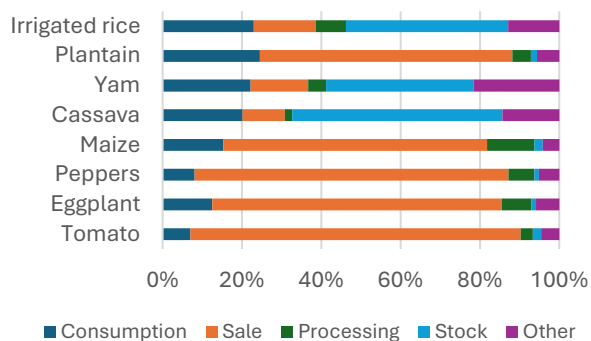
Crops	Output Tonnes
Staple crops	
Cassava	7 392 519
Yam	6 963 767
Plantain	2 270 901
Maize	1 829 263
Rice	1 813 627
Vegetable crops	
Tomato	478 007
Eggplant	219 269
Peppers	142 119
Cash crops	
Cocoa	1 658 145
Oil palm	1 530 284
Rubber	1 076 658
Cashew nut	831 593
Cotton	384 466
Coffee	80 384

Note 1: Crops are sorted in descending order by output within each crop type. **Note 2:** Rice includes irrigated rice, lowland rainfed rice and upland rainfed rice.

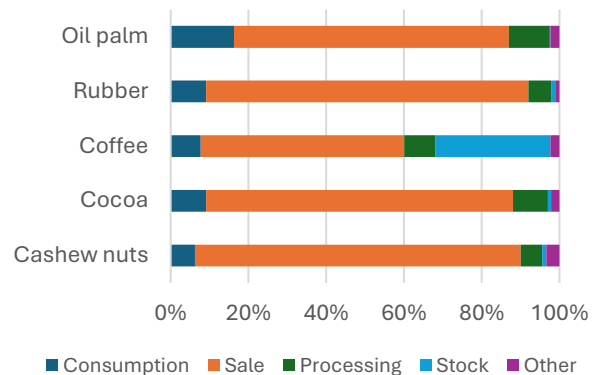
Production use

Across the main crop categories, production is mainly directed towards sales and stocks. Staple crops have the largest share devoted to domestic consumption, with stocks often intended for further consumption. For example, nearly one-fourth of plantain production is consumed domestically. Vegetable crops are predominantly market-oriented, particularly tomatoes (83.4 percent of production to sales), peppers (79.1 percent) and eggplants (73.1 percent). Cash crops are also largely sold in raw form (around 80 percent for cashew nuts, rubber and cocoa) or processed. Domestic consumption remains limited across all cash crops, with oil palm recording the highest share consumed locally (16.2 percent). Processing activities remain limited across cash crops, with oil palm being the only crop for which more than 10 percent of production is processed.

Uses of staple crop and vegetable production (percentage of total volume)



Uses of cash crop production (percentage of total volume)



Note: The category “other” for staple crops includes seeds, animal feed, payment. For cash crops, it includes animal feed and payment.

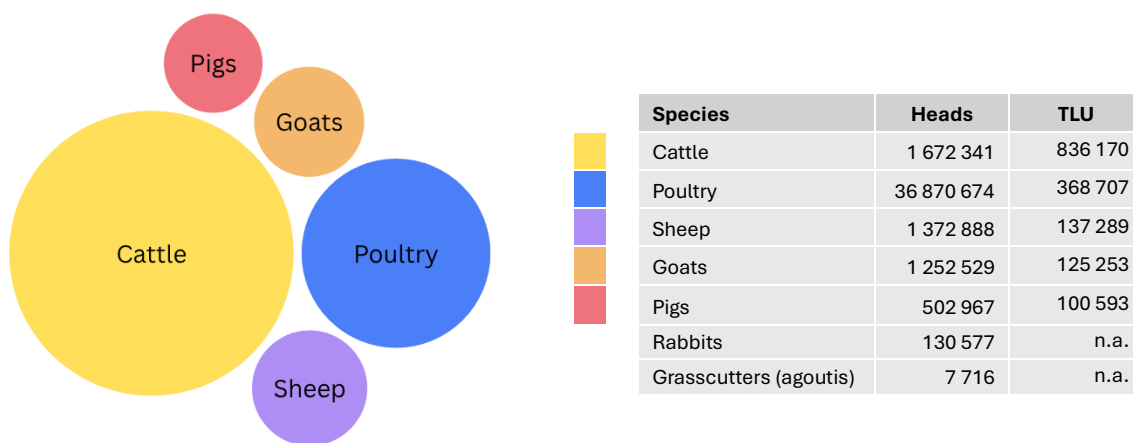


©FAO / Candida Villa-Lobos

Livestock rearing

Livestock farming is practiced by 60 percent of agricultural households at the national level, with significant regional differences. The regions of Poro and N’Zi record the highest shares, at 86 percent and 78 percent of agricultural households active in the sector, respectively, while the La Me region has the lowest share at 32 percent.

Population sizes of livestock species in tropical livestock units (TLU)



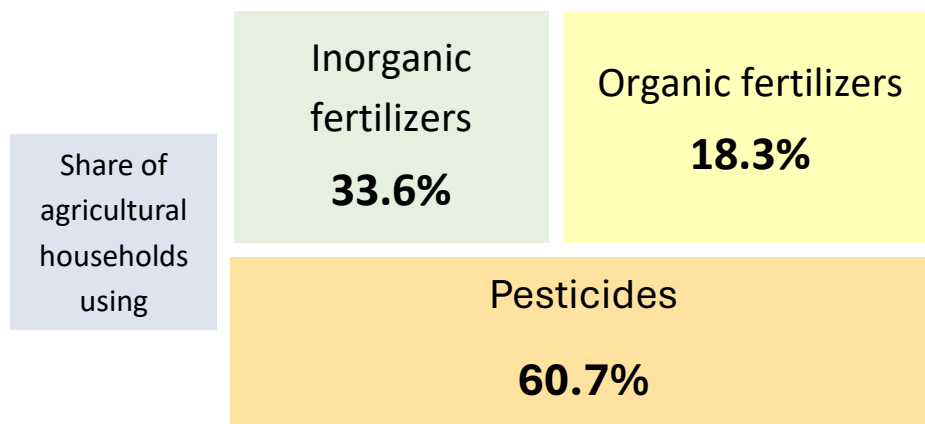
Cattle accounts for the largest share of the animal population in terms of tropical livestock units (TLU), reaching around 836 000 TLU. Poultry totals around 369 000 TLU, sheep 137 000 and goats around 125 000 TLU. Pig farming also plays a role in livestock production, with approximately 101 000 TLU recorded. Rabbits and grasscutters remain limited in scale.

Note: Livestock includes poultry. **Note 2:** TLU conversion factors are based on FAO (2019).

Input use

Inputs are used by a large fraction of agricultural households. 33.6 percent use inorganic fertilizers, 18.3 percent reported using organic fertilizers, and 60.7 percent reported using pesticides. Pesticide use is particularly high for certain crops, such as beans (18.1 kg/ha), plantains (11.5 kg/ha for solid pesticides and 8.0 l/ha for liquid pesticides), tomatoes (11.0 kg/ha) and eggplants (7.8 l/ha).

Share of agricultural households using different inputs

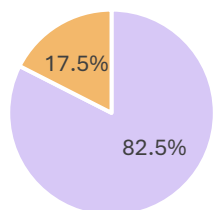


Note: Application rates are measured in kg/ha for solid pesticides, and l/ha for liquid pesticides.

Women

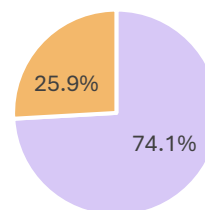
Agricultural land management in Côte d'Ivoire remains predominantly male-driven. Men account for 82.5 percent of household heads and 74.1 percent of plot managers, compared to 17.5 percent and 25.9 percent for women, respectively. Significant gender disparities extend to land access and plot size as well: male-headed households cultivate significantly larger plots than female-headed ones, averaging 3.7 hectares compared to 2.1 hectares.

Proportion of agricultural households headed by men and women



■ Men ■ Women

Proportion of plots managed by men and women



■ Men ■ Women

Technical annex

Sources and scope

- Ministère de l'Agriculture, du Développement Rural et des Productions Vivrières (MINADERPV). 2026. Rapport d'analyse des résultats de l'Enquête Agricole Annuelle 2024-2025 (EAA 2024-2025). Abidjan. Côte d'Ivoire.
<https://agriculture.gouv.ci/publications/sous-categorie/12>
- Food and Agriculture Organization of the United Nations (FAO). 2019. *Data for monitoring SDG indicators 2.3.1 and 2.3.2*. Rome. <https://openknowledge.fao.org/items/cfdafb28-6080-4bdd-8186-52eef5279ec6/full>
- Coverage unit: Agricultural household sector.
- Geographical scope: Nationally representative survey.
- Product scope: crops and livestock.
- Cash and staple crops classification is based on the EAA 2024-2025 survey report (MINADERPV, 2026).

Indicators

All the indicators produced in this brief can be considered as statistically representative at the geographical scale at which they are presented. Definitions below are provided by the Ministère de l'Agriculture, du Développement Rural et des Productions Vivrières. For full details, please refer to the EAA 2024–25 survey report (MINADERPV, 2026).

- Agricultural land area includes any area forming part of the holding, including arable land, pastures and other non-arable land such as land associated with premises used for agricultural activities. The agricultural area figures only include land used by agricultural households engaged in crop production, and exclude land used by agricultural household active only in other activities.
- Arable area includes cultivated land, fallow land and pastures. The arable area figures cover agricultural households engaged in crop production and exclude agricultural household active only in other activities.
- Agricultural holding: economic unit of agricultural production under single management comprising all livestock kept, and all land used wholly or partly for agricultural production purposes, without regard to title, legal form or size.
- Agricultural household (farming household): population unit referring to a household with members practicing own account agricultural activities.
- Plot: part or whole of a field on which a specific crop or crop mixture is cultivated.

- Organic fertilizers include solid manure, liquid manure/slurry, vegetable material and compost, stabilized sewage sludge, bio stimulants, and other organic fertilizers.
- Inorganic (chemical) fertilizers include urea, NPK, other nitrogenous fertilizers, superphosphates (above 35 percent of P_2O_5), other phosphatic fertilizers, potassium chloride (MOP), other potassic fertilizers, diammonium phosphate (DAP), and other inorganic fertilizers
- Pesticides include insecticides, herbicides (solid), herbicides (liquid), fungicides and rodenticides.

The data presented in this brief are sourced from countries' surveys and may differ from data published on other FAO platforms.

FAO Survey Team/50x2030 Initiative
Statistics Division – Economic and Social Development
integrated-agricultural-surveys@fao.org
www.fao.org/in-action/agrisurvey
Food and Agriculture Organization of the United Nations (FAO)
Rome, Italy

The designations employed and the presentation of material in this information product do not imply the expression of any opinion whatsoever on the part of the Food and Agriculture Organization of the United Nations (FAO) concerning the legal or development status of any country, territory, city or area or of its authorities, or concerning the delimitation of its frontiers or boundaries. The mention of specific companies or products of manufacturers, whether or not these have been patented, does not imply that these have been endorsed or recommended by FAO in preference to others of a similar nature that are not mentioned.

© FAO and the International Bank for Reconstruction and Development/The World Bank, 2026



Some rights reserved. This work is available
under a [CC BY-NC-SA 3.0 IGO](https://creativecommons.org/licenses/by-nc-sa/3.0/) licence