



50x2030

DATA-SMART AGRICULTURE

RESILIENCE IN ACTION

CELEBRATING THE INITIATIVE'S MILESTONES

MID-TERM REPORT
FY20 - FY25
JULY 1, 2019 - JUNE 30, 2025

THE 50x2030 INITIATIVE DELIVERING FOR THE PEOPLE

COVER PHOTO: WOMAN AND CHILD NEAR MANGOCHI, MALAWI / IMAGE BY AMMAD RASOOL VIA PEXELS.
THIS PHOTO BY AYRUS HILL VIA UNSPLASH.



TABLE OF CONTENTS

01. MESSAGE FROM THE PROGRAM MANAGER	4
02. EXECUTIVE SUMMARY	6
03. ABOUT THE PROGRAM	10
04. PROGRAM MILESTONES	18
• Milestones Achieved	
4.1 Engaging fragile and vulnerable countries and populations	20
4.2 Relevant data and indicators made available	24
4.3 Robust national agricultural data systems	28
4.4 Transforming data into actionable information and measurable results	32
4.5 Innovative methods developed for modern survey practice	34
• Engagement, Coordination and Advocacy	38
05. THE NEXT PHASE	40
• Tightened Priorities from FY26	41
• Future Prospect	43
06. ANNEXES	46
• Annex 1: Country Activities	48
• Annex 2: Publications	56
• Annex 3: Key Events	62
• Annex 4: List of Abbreviations	66



01

MESSAGE FROM THE PROGRAM MANAGER

When we launched the 50x2030 Initiative, we were guided by a simple but powerful belief: better agricultural data can change lives. Turning that vision into reality has required persistence, trust, and resilience. From the start, we have worked in environments shaped by uncertainty—global shocks, climate stress, fragile institutions, and competing national priorities. Building and sustaining agricultural data systems under these conditions has not been easy. Yet recent global disruptions have only reinforced why 50x2030 matters: when uncertainty grows, the need for reliable, trusted data becomes even more critical.

The progress documented in this report is first and foremost the result of strong partnerships. I would like to express my sincere gratitude to our donors and funding partners who believed in this vision and committed to long-term investment. Your support has gone far beyond financing—it has provided the trust, flexibility, and space needed to innovate. Together, we have demonstrated that agricultural data are not a short-term technical exercise, but a strategic public good that supports better policies, smarter investments, and more resilient food systems. I also thank our implementing partners,

whose expertise, commitment, and shared sense of purpose have turned ambition into tangible results on the ground.

I am especially proud of what has been achieved alongside our partner countries. National Statistical Offices, Ministries of Agriculture, and technical teams have shown remarkable dedication in building and modernizing agricultural data systems, often starting from limited capacity and resources. Their leadership and ownership are central to the Initiative's success. By investing in regular surveys, improved data quality, and stronger integration of evidence into policy and planning, these countries are laying the foundations for stronger and more resilient rural communities. Working alongside our partner countries has been both humbling and inspiring.

I am encouraged by the growing community of stakeholders—researchers, regional institutions, civil society, and global partners—who see the value that 50x2030 brings. The increasing demand for our data, tools, and knowledge products reflects a broader shift: agricultural statistics are increasingly seen not just as

technical outputs, but as strategic assets. Ultimately, data matter most when they are used, trusted, and integrated into decision-making. While I am proud of how far we have come, our journey is not yet complete. Significant data gaps remain, and sustained investment is essential to reach our shared ambition of transforming agricultural data systems by 2030.

Looking ahead, the Initiative will continue to build on the resilience, adaptability, and determination that have defined it from the start. I remain confident that, with the continued partnership and commitment of our donors, countries, and stakeholders, we will continue to deliver – so that better data can lead to better decisions, stronger systems, and meaningful improvements in the lives of the people we ultimately serve.

— VASCO MOLINI



A DRONE OPERATOR PREPARES TO WORK AT A FARM AT TENGERU, NEAR THE CITY OF ARUSHA IN TANZANIA, 2023. / PHOTO BY EDUARDO SOTERAS VIA FAO.

02.

EXECUTIVE SUMMARY

This special edition, the 50x2030 Mid-Term Report, focuses on the key milestones of the Initiative from its inception in July 2019 to June 2025. It lays out the successes achieved over six years of operation in supporting countries to address the agricultural data gap and improve national agricultural data systems. With its ambitious goal of reaching 50 low- and lower-middle-income countries by 2030, the Initiative is in various stages of engagement with 35 countries, mostly in Sub-Saharan Africa and Asia. It provides targeted technical assistance to develop and enhance national agricultural data systems, enabling countries to produce high-quality agricultural survey data and to promote their broad use in policy and decision-making. The Initiative has also produced global public goods – in the form of guidelines and technical research on improving agricultural survey design, methodology, and tools – to help countries modernize their agricultural data systems.



+65 million

smallholder farmers are included in agricultural surveys conducted under the 50x2030 initiative

TEA HARVESTERS IN INDIA. / PHOTO BY ROHIT DEY VIA UNSPLASH.

STRATEGIC OUTREACH

Millions of smallholder farmers from low- and lower-middle-income countries have been represented in the Initiative's extensive agricultural surveys. The Initiative targeted countries that lacked nationally representative or up-to-date agricultural surveys, enabling them to generate national data and indicators that have enhanced the quality and availability of agricultural information. These efforts have ensured that countries previously lacking reliable data now have essential resources for policymaking, and the provision of technical assistance has strengthened national capacity in survey operations and management.

USE & IMPACT DEMONSTRATED

The Initiative has influenced national decision-making processes by integrating data into partner countries' policies, supporting capacity building, and improving outcomes. It delivered targeted data use support to partner countries, organized training sessions on analytics and communication, and facilitated the production of country policy briefs and factsheets. Notably, it supported the estimation and reporting of Sustainable Development Goal (SDG) and Comprehensive Africa Agriculture Development Programme (CAADP) indicators.

IMPROVED SURVEY METHODS & TOOLS

The development of tools and standard methods to improve agricultural surveys is a key part of the Initiative's program. Technical notes, guidelines, and survey instruments have been developed to support enhancements in survey protocols in partner countries. These include, among others, the adoption of Computer-Assisted Personal Interviewing (CAPI) systems in survey operations, allowing for greater data quality monitoring and more timely dissemination, and the collection of georeferenced data, creating opportunities for countries to better map regional agricultural development.



“The Initiative will enable us to set up and operationalize a permanent agricultural statistics system, i.e., the annual livestock and crop production survey, as well as other surveys in agricultural sub-sectors such as fishing and aquaculture, and the forestry sector.”

— MRS. JOCELINE JULIE SOLONITOMPOARINONY, HEAD OF THE AGRICULTURAL STATISTICS DEPARTMENT | GENERAL SECRETARIAT - MINISTRY OF AGRICULTURE AND LIVESTOCK, MADAGASCAR

PHOTO VIA WORLD BANK.



STRATEGIC OPERATIONS & PARTNERSHIPS

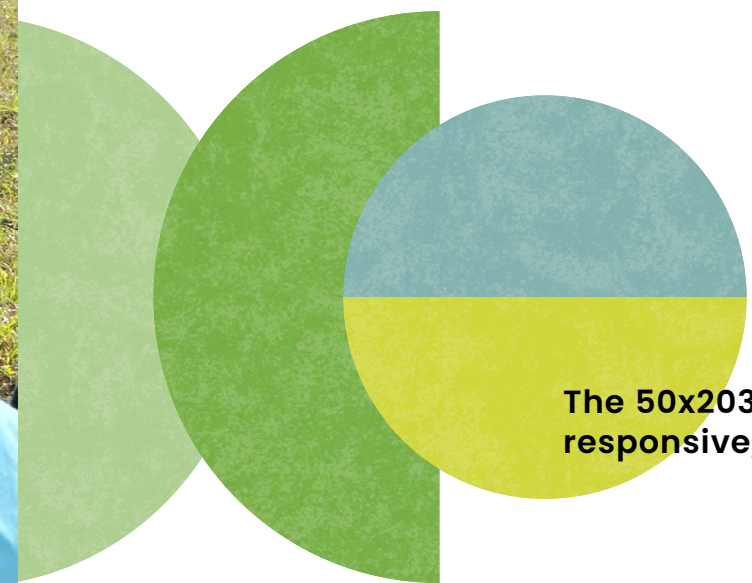
The Initiative's success relies on forging strong partnerships with governments, international organizations, funding agencies, and technical experts. Efforts include resource mobilization through the World Bank International Development Association (IDA) and International Bank for Reconstruction and Development (IBRD), promoting government financing for statistics, and securing donor contributions. Collaboration with national statistical offices and ministries of agriculture in partner countries has supported the modernization of data practices. By leveraging the expertise of diverse partners, 50x2030 has created a flexible operational model that has improved agricultural data quality, availability, and impact in partner countries.



PHOTO VIA FAO.

The 50x2030 Initiative goes beyond just producing data: it supports countries in strengthening their data systems, mobilizing sustainable financing, and building the political economy of data. In the next five years, the Initiative will continue to build on its achievements and work toward its goals of bridging agricultural data gaps, reinforcing national agricultural data systems, and ensuring agricultural policies are better informed by data generated through 50x2030. It will seize the opportunity to scale up its support for countries to produce quality agricultural data and further advance its data-to-action approach to aid countries in making better use of data to inform decisions.

The 50x2030 Initiative will continue to be agile, responsive, ready to pivot and adapt as needed.



03

ABOUT THE PROGRAM

PROGRAM OBJECTIVES

- Support countries to invest in cost-efficient agricultural survey programs that produce high-quality, timely, and comparable agricultural and rural survey data.
- Strengthen national agricultural data systems through capacity enhancement, methodological improvements, tool development, and the adoption of international standards.
- Reinforce countries' capacity to use agricultural data in policy, planning, and investment decisions.
- Promote data-driven agriculture globally.

OUR MISSION

is to empower 50 low- and lower-middle-income countries to build strong national data systems that produce and use high-quality and timely agricultural data through sustainable survey programs.

WE ENVISION

countries having the necessary foundational agricultural data to inform national development plans and investment strategies that transform people's lives.

"The 50x2030 Initiative makes a critical contribution to strengthening agricultural statistics in Guinea, directly supporting the Guinea Commercial Agriculture Development Project (PDACG). It helps address gaps in agricultural data, improve the quality of surveys, and support evidence-based decision-making.

— JEANNE COULIBALY,
SENIOR AGRICULTURE ECONOMIST, TEAM LEADER OF THE GUINEA COMMERCIAL AGRICULTURE DEVELOPMENT PROJECT, WORLD BANK.



PHOTO BY ELOISE GAUMIER VIA UNSPLASH.



PHOTO BY DERRICK PARE VIA UNSPLASH.

STRATEGIC DIRECTION

PHOTOS FROM LEFT TO RIGHT: SENEGAL, BY E. DIOP VIA UNSPLASH. / INDONESIA, BY DUC NGUYEN VIA PEXELS. / MALAWI, BY RICHARD NYONI VIA UNSPLASH. / INDIA, BY DIBAKAR ROI, VIA UNSPLASH.



5
pilot countries engaged

30
new countries rapidly engaged

START UP PHASE

(FY20-FY22)

- Program protocols, processes, systems, guidelines, communication platforms established
- Survey and data use activities commenced
- Methodological guidelines, technical notes issued

EXPANSION PHASE

(FY23-FY25)

- Mainstreamed 50x2030 in 6 large IDA/IBRD projects
- IDA/IBRD funding unlocked for agricultural surveys
- Survey and data use activities implemented
- Methodological papers, technical notes and guidelines published
- Outreach activities conducted

MATURATION PHASE

(FY26-FY28)

- New IDA/IBRD funding to be secured
- At least 10 countries to graduate from 50x2030
- New partnerships on capacity building to be established
- Communication platforms to be upgraded (data dashboard launched)
- National policy documents would use 50x2030 data

COMPLETION PHASE

(FY29-FY30)

- Closing of activities in countries
- Wider dissemination and advocacy of 50x2030 outputs
- Prepare new program strategy (to continue/sustain gains achieved by 50x2030)

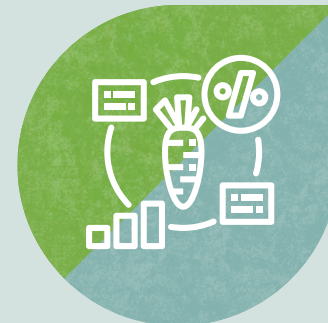
KEY ACTIVITIES



Support countries to produce and disseminate agricultural data through annual surveys



Support the utilization of survey data for policymaking and decision-making in the agriculture sector



Build and enhance the governance and management of agricultural data systems



Conduct research to improve agricultural survey methodologies and tools

FINANCING

50x2030 is transforming agricultural data systems through strategic financial partnerships with the World Bank IDA/IBRD, donors, and governments.

us\$161.8m

World Bank IDA/IBRD funds mobilized for agricultural survey covering 29 countries

- Harmonizing and Improving Statistics in West Africa (HISWA)
- Harmonizing and Improving Statistics in West and Central Africa (HISWACA SOP 1 and 2)
- Eastern Africa Regional Statistics Program for Results (EARSPrR - EAC)
- Southern African Development Community (SADC) Regional Statistics Project
- Angola Strengthening Statistical Capacity (ANG_STAT)
- Agro-Climatic Resilience in Semi-Arid Landscapes (ACReSAL)
- Tunisia Emergency Food Security Response (TUN_LAG)

us\$37.5m

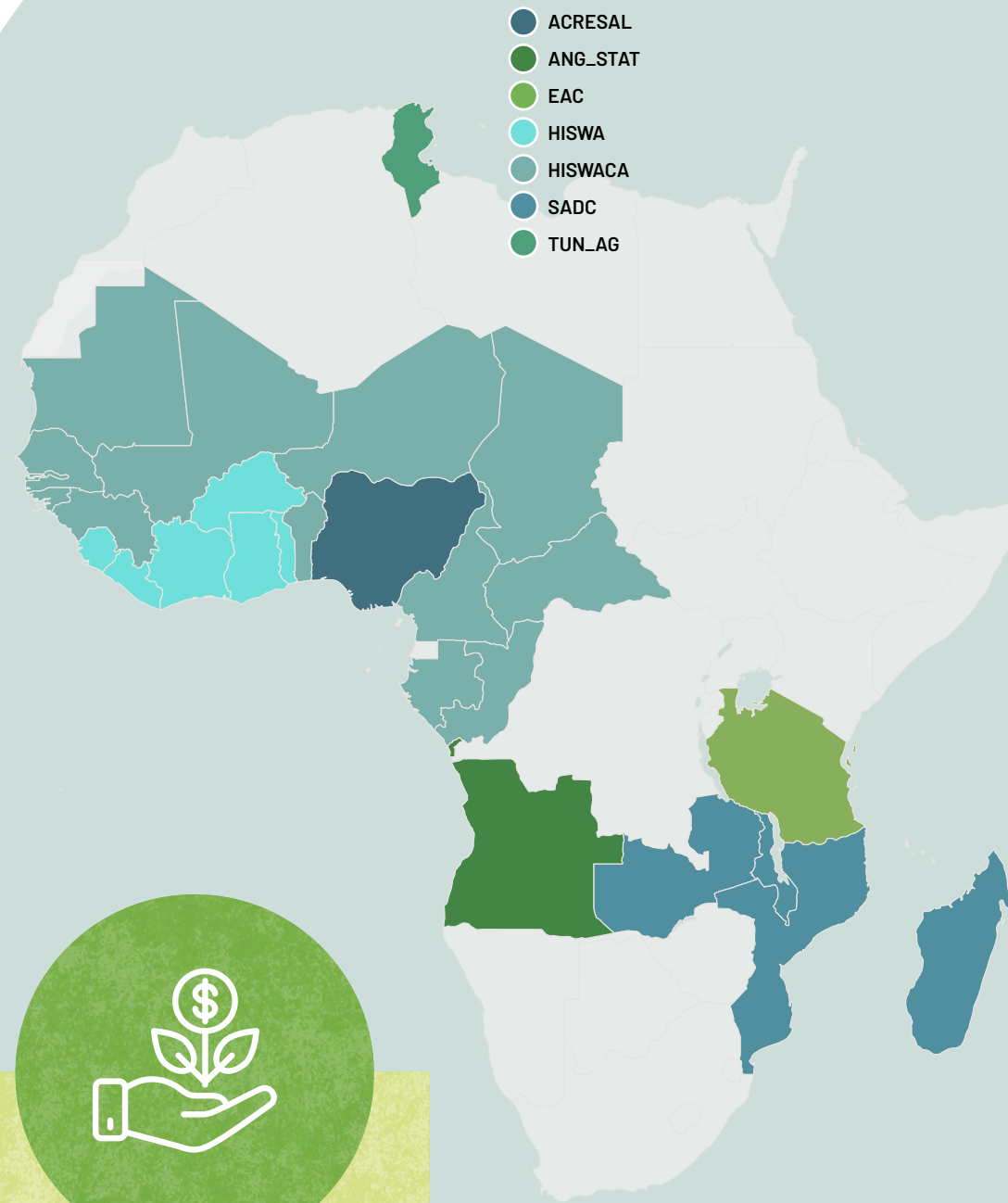
estimated co-financing from national government budget allocation in 11 countries

us\$73m

in multi-donor trust funds and other funding mechanisms – contributions received from donor partners since inception

us\$30m

current funding gap to finance/support technical assistance to countries



SPOTLIGHT

INNOVATIVE FINANCING MODEL OF 50x2030 – LEVERAGING IDA AND IBRD RESOURCES

A cornerstone of 50x2030’s operational success lies in its pioneering approach to financing, which deftly leverages resources from the World Bank International Development Association (IDA) and the International Bank for Reconstruction and Development (IBRD) credits. **By integrating IDA/IBRD funding streams with those from bilateral donors and partner governments, the Initiative has constructed a blended financial architecture that maximizes both scale and sustainability.**

This innovative model allows governments to use their IDA or IBRD funds in conjunction with grant support for technical assistance and capacity-building to design and implement agricultural surveys. The strategic use of such resources enables countries to embed agricultural data production within the broader development agenda, ensuring investments are both country-owned and responsive to national priorities. This fosters country leadership, accountability, and commitment, and secures financial sustainability beyond short-term grant cycles.

By tapping into the catalytic power of IDA and IBRD financing, 50x2030 has expanded its reach and deepened its impact, empowering partner countries to strengthen their agricultural data ecosystems and unlock evidence-based policy advancements. This financing strategy stands as a model for resource mobilization—one that is agile, scalable, and designed to support transformative change in the world’s most data-challenged regions.



PHOTO BY MARKUS SPISKE VIA UNSPLASH



PHOTO BY TRAN LE TUAN VIA PEXELS.

PARTNERSHIPS

IMPLEMENTING AGENCIES



THE WORLD BANK
IBRD • IDA | WORLD BANK GROUP



**Food and Agriculture
Organization of the
United Nations**



DONORS

Gates Foundation



**Federal Ministry
for Economic Cooperation
and Development**



USAID
FROM THE AMERICAN PEOPLE



Australian Government



**ITALIAN AGENCY
FOR DEVELOPMENT
COOPERATION**



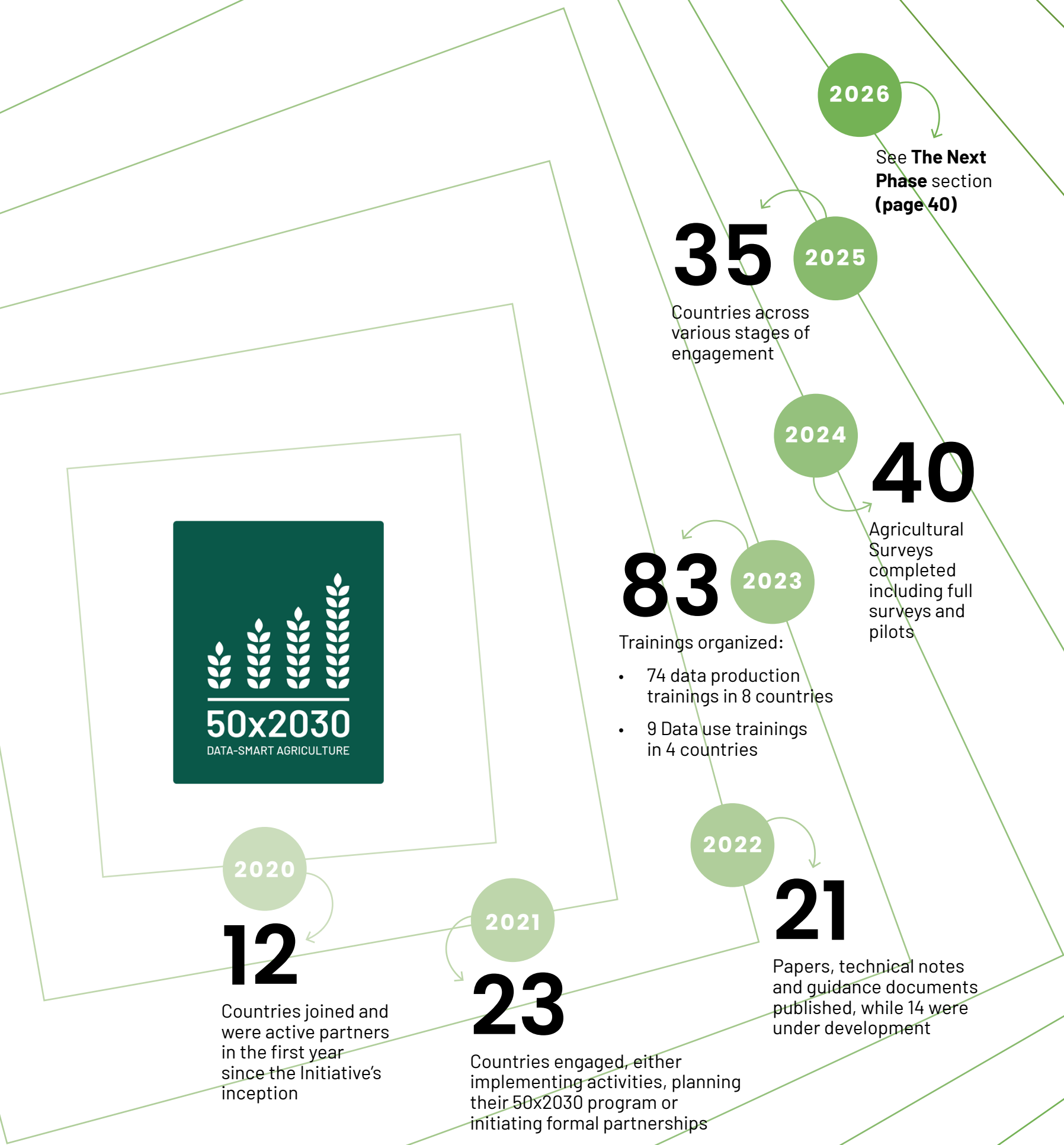
**MINISTÈRE
DE L'EUROPE
ET DES AFFAIRES
ÉTRANGÈRES**

*Liberté
Égalité
Fraternité*

04

PROGRAM MILESTONES

Over six years, the 50x2030 Initiative helped shape food security and agricultural sustainability policies, reached more than half of its target countries, and supported annual agricultural surveys, data sharing, skill development, and knowledge creation. Its research produced guidance and new tools to improve survey methods.



MILESTONE ACHIEVED

ENGAGING FRAGILE AND VULNERABLE COUNTRIES AND POPULATIONS

50x2030 prioritizes low- and lower-middle-income countries, mainly in Sub-Saharan Africa, targeting fragile and conflict-affected regions where two-thirds of the world's extreme poor live. Recognizing the lack of foundational agricultural data in these contexts, robust agricultural survey systems were developed, helping many countries to conduct annual surveys for the first time, producing reliable data for policymaking. This progress enables governments to base decisions on evidence, allocate resources efficiently, and design inclusive strategies. Vulnerable groups are now better represented in planning, allowing for more targeted and effective interventions, laying the groundwork for progress and stability in some of the world's most challenging environments.

More than half of 50x2030 partner countries are heavily dependent on agriculture, with the share to the Gross Domestic Product (GDP)ⁱⁱⁱ ranging from

20-37%

iii. As of 2024 <https://wdi.worldbank.org/table/4.2#>

+136 million

hectares of agricultural land have been represented in agricultural surveys conducted

11

partner countries in fragile and vulnerable situationⁱ

15

partner countries categorized as low incomeⁱⁱ

i. World Bank classification for FY25 "List of Fragile and Conflict-affected Situation": <https://thedocs.worldbank.org/en/doc/b3c737c4687d-b176ec98f5c434d0de91-0090082024/original/FCSListFY25.pdf>

ii. World Bank classification: <https://datahelpdesk.worldbank.org/knowledgebase/articles/906519-world-bank-country-and-lending-groups>

5

countries lacking nationally representative agricultural surveys or with surveys outdated by more than 10 years prior to 50x2030 support

- Angola
- The Gambia
- Guinea
- Liberia
- Sierra Leone

8

countries lacking an agricultural census or with a census outdated by more than 30 years prior to 50x2030 support

- Cameroon
- Central African Republic
- Chad
- Gabon
- Liberia
- Sierra Leone
- Nigeria
- Zambia

FULANI NOMADS GUIDE THEIR CATTLE IN NIGER. PHOTO BY DEEN DOCS VIA PEXELS.

NAKURU COUNTY IN KENYA. / PHOTO BY VINCE PICTURES VIA PEXELS.

SPOTLIGHT

DATA-DRIVEN TRANSFORMATIONS IN LIBERIA AND SIERRA LEONE

Liberia and Sierra Leone are two of the fragile countries 50x2030 has partnered with.

Both countries made notable strides in closing their agricultural data gaps, ensuring data is made available to report on progress in achieving their national development goals:

- Both countries conducted their **first ever Annual Agricultural Survey**.
- Liberia completed the **2023 Liberia Agricultural Census, 50 years after the first-ever agriculture census in the 1970s**.
- Both countries pilot-tested the **Women’s Empowerment and Nutrition module**, collecting valuable data for SDG and CAADP monitoring and engaging female enumerators for gender-sensitive research.
- Liberia introduced its **first National Data Archive** to enhance data transparency and accessibility.

Their experiences demonstrate that with sustained technical assistance, adequate financial support, and strong national engagement, countries can deliver quality agricultural data, build institutional resilience, and align their systems with global best practices. These achievements position both countries to continue producing decision-ready data for planning, investment, and inclusive rural development.

“The Initiative is coming at a critical time, as without data there would/could be challenges in the delivery or implementation of programs, in engaging partners and in having concrete and realistic information to help in the decision-making process.”

— DR. ABU BAKARR KARIM,
FORMER MINISTER OF AGRICULTURE
AND FORESTRY OF SIERRA LEONE



LIBERIA, 2024. / PHOTO BY ANDREW ESIEBO VIA FAO.



MILESTONE ACHIEVED

RELEVANT DATA AND INDICATORS MADE AVAILABLE



3

3 countries generated indicators on Women's Empowerment and Dietary Diversity

Catalyzing a transformative shift in agricultural data systems by reducing persistent data gaps and strengthening evidence-based policymaking is a major achievement of the Initiative. Partner countries that historically lacked agricultural statistics are now able to track productivity, gender participation, and agriculture's economic impact. These statistics help governments monitor progress, set targets, and attract investment. Beyond foundational data, countries are able to produce advanced and specialized indicators on mechanization, labor productivity, environmental and climate factors, and access to financial services, to inform more targeted interventions.

4

4 countries with indicators relating to mechanization and agricultural assets as well as labor productivity, access to financial services, and agricultural subsidies and transfers

- Cambodia
- Georgia
- Indonesia
- Senegal



TOP PHOTO BY I KDB VIA PEXELS.
THIS PHOTO BY LONG BA MUI VIA PEXELS.

4

4 countries able to generate environmental and climate-related indicators such as on climate adaptation practices, exposure to climate-related risks and shocks, soil fertility, sustainability practices, and adoption of agricultural technologies, including indicators for the Sustainable Development Goal (SDG) 2.4.1



10

10 countries implemented alignment of agricultural census with agricultural surveys

- Burkina Faso
- Cambodia
- The Gambia
- Liberia
- Madagascar
- Malawi
- Mali
- Niger
- Nigeria
- Togo

50

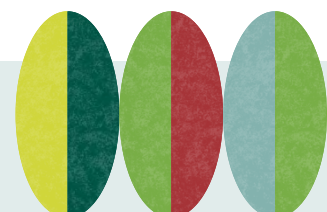
50 data points computed on SDG indicators 2.3.1 / 2.3.2 / 2.4.1 / 5.a.1

91

91 data points made available to inform the Comprehensive Africa Agriculture Development Program (CAADP)

21

21 countries with the Global Positioning System (GPS) coordinates collected during survey data collection



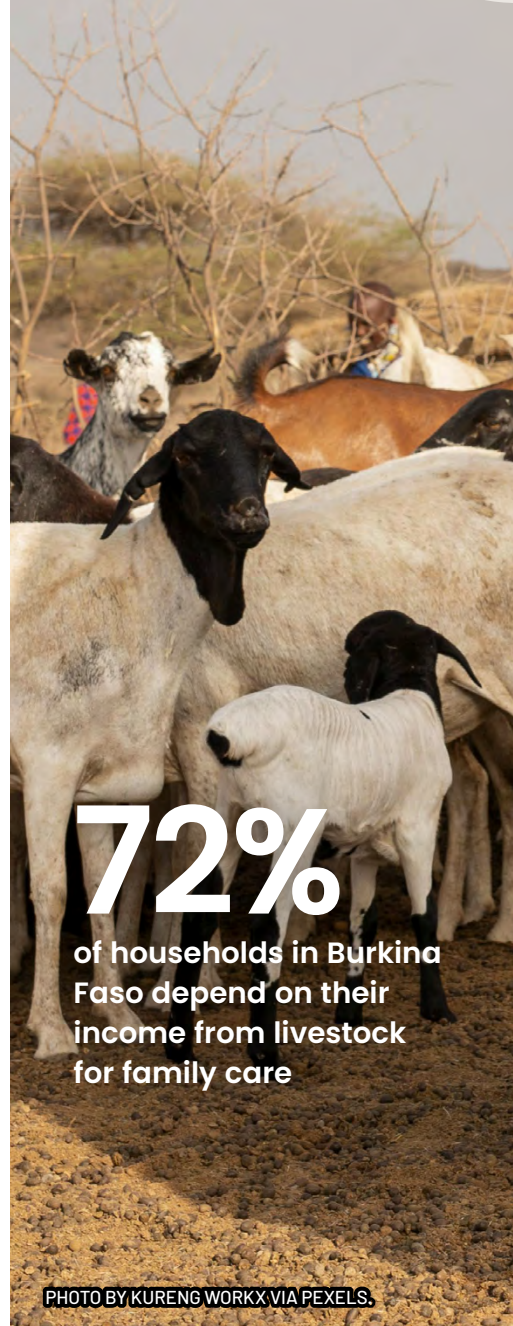
SPOTLIGHT

BURKINA FASO EXPANDS AGRICULTURAL DATA TO DRIVE GROWTH AND INNOVATION

Burkina Faso collaborated with the 50x2030 Initiative to improve its Enquête Permanente Agricole (EPA) and broaden the data available on the economic, social, and environmental aspects of the agriculture sector, with particular emphasis on livestock and animal production. The EPA 2023-2024 survey, conducted from June to December 2023, included the Production Methods and Environment module and was implemented across all 45 provinces of Burkina Faso. It generated data on crop yields and production volumes; use of agricultural inputs such as seeds, fertilizers, and pesticides; farming techniques and approaches; household livestock ownership and management; and household food security status, among others. The resulting indicators are intended to inform policies and programs addressing issues on agricultural productivity, climate vulnerability, irrigation limitations, livestock sector conditions, food security, and gender disparities.

Some key findings on livestock from the [EPA 2023-2024 survey](#):

- Burkina Faso has a large livestock herd recorded with 6.19 million cattle, 9.7 million sheep, 12.8 million goats and 33 million local chickens. However, despite extensive livestock farming, the practice is mainly sedentary with little intensification.
- Income from livestock farming is primarily used for family care and food expenses reported at 72 percent and 53 percent of households, respectively. Less than 10 percent of households invests in income-generating activities.
- Animal health care is pervasively practiced by cattle farmers while controlled breeding and genetic improvement remain marginal.



72%
of households in Burkina Faso depend on their income from livestock for family care

PHOTO BY KURENG WORKX VIA PEXELS.

DATA FOR CHANGE



EMPOWERING WOMEN, TRANSFORMING AGRIFOOD SYSTEMS

DATA FOR CHANGE REPORT COVER, PUBLISHED BY FAO IN 2023.



PHOTO BY VINCE RUSSELL VIA UNSPLASH.

SPOTLIGHT

DATA ON WOMEN'S EMPOWERMENT IN SIERRA LEONE

The 50x2030 Initiative adopted the Women's Empowerment and Dietary Diversity module within agricultural surveys in Liberia, Sierra Leone, and Tanzania. The survey results measure women's empowerment and gender equality within agrifood systems, helping to inform policies and programs that address gender gaps, improve women's well-being, increase incomes, and strengthen resilience.

For instance, results from the 2024 Sierra Leone survey highlight the following:

- **Leadership and decision-making in agriculture:** Men dominate leadership role in agriculture, with female leadership significantly lower in the North-Western (29.7% female leadership vs. 44.8% male) and Eastern regions (31% female vs. 37.04% male), limiting women's influence in decision-making.
- **SDG 5.a.1 indicator monitoring gender equality over agricultural land:** Results show a 7.5 percent gap between women (12.9%) and men (20.4%) in tenure rights over agricultural land.

[Survey results and microdata on Sierra Leone](#) are available for download. Other relevant materials: [WEN brochure](#), 69th session of the Commission on the Status of Women - [Recording](#), [FAO Article](#), [50x2030 Article](#), [IFPRI Blog](#).

MILESTONE ACHIEVED

ROBUST NATIONAL AGRICULTURAL DATA SYSTEMS

Partner countries, with support from the Initiative, have built robust national data systems for agriculture, enhancing their technical abilities in survey design, data processing and analysis, communication, and IT adoption. These improvements enable regular, timely, and comprehensive data releases, in-depth analysis, and decision-ready information that supports policymaking. Enhanced data systems foster transparency, accountability, and inclusive governance, particularly in low-income countries where effective resource allocation is crucial. Robust national agricultural data enables evidence-based policies, faster responses to challenges, and supports sustainable development. The 50x2030 Initiative demonstrates how better data drives improved governance and progress in agriculture.



TORIT, SOUTH SUDAN / PHOTO BY STEFANIE GLINSKI VIA FAO.



LIBERIA, 2024 / PHOTO BY ANDREW ESIEBO VIA FAO.

63

agricultural surveys completed (full surveys and pilots) in 26 countries

COUNTRIES	A	B	C	D	E	F
ANGOLA	●	○	○	○	○	○
ARMENIA	●	○	○	○	○	○
BENIN	●	○	○	○	○	○
BURKINA FASO	●	●	●	●	●	○
CABO VERDE	●	○	○	○	○	○
CAMBODIA	●	●	●	●	●	○
CÔTE D'IVOIRE	●	○	○	○	○	○
ETHIOPIA	●	●	●	●	●	○
THE GAMBIA	●	●	○	○	○	○
GEORGIA	●	●	●	●	●	○
GHANA	●	○	○	○	○	○
GUINEA	●	○	○	○	○	○
GUINEA BISSAU	●	○	○	○	○	○
INDONESIA	●	●	●	●	●	○
LIBERIA	●	●	●	●	●	○
MADAGASCAR	●	●	○	○	○	○
MALAWI	●	●	●	●	●	○
MALI	●	○	○	○	○	○
MAURITANIA	●	○	○	○	○	○
NEPAL	●	●	●	●	●	○
NIGER	●	○	○	○	○	○
NIGERIA	●	●	●	●	●	○
SENEGAL	●	●	●	●	●	○
SIERRA LEONE	●	●	●	●	●	○
TANZANIA	●	●	●	●	●	○
TOGO	●	○	○	○	○	○
UGANDA	●	●	●	●	●	○
ZAMBIA	●	●	○	○	○	○

28

countries provided with technical support to implement agricultural surveys

16

countries with at least 2 agricultural survey rounds conducted

50

survey reports produced and disseminated

14

countries with sex-disaggregated data made available

200+

technical trainings conducted aimed at improving statistical capacity to manage and operationalize agricultural survey program. Such as:

- Questionnaire development/design including sampling design
- CAPI and adoption of IT and software tools
- Data cleaning/editing/data processing
- SDG-related data anonymization and dissemination

7

countries with reduced time lag in data release within 12 months of data collection

54

surveys implementing one or more advanced 50x2030 survey methods:

- Collection of GPS coordinates of the dwelling, plots or parcels
- Plot or parcel area measurement
- Plot or parcel boundaries
- Soil measurements
- Losses measurements
- Mixed data collection modes
- Women's empowerment

37

national microdata sets produced and disseminated

- Burkina Faso (2): EHCVM-P 2021/22, EPA 2023/2024
- Cambodia (5): CIAS 2019, CAS 2020, CAS2021, CAS2022, CAS2023
- Ethiopia (2): ESS4 2018/19, ESS5 2021/22
- Georgia (5): GSAH 2020, GSAH 2021, GSAH 2022, PME 2021, MEA 2022;
- Liberia (2): LAC HH-Listing 2024, LAC-Community 2024
- Malawi (2): IHS 2019/20, IHPS 2019
- Nepal (2): PAGRIS 2019, CLIS 2021
- Niger (1): EPPR 2024
- Nigeria (3): GHS 2018/19, NASC HH-Listing 2022, NASS 2023
- Senegal (6): EAA 2017/18, 2018/19, 2019/20, 2020/21, 2021/22, 2022/23
- Sierra Leone (2): SLAAS 2023, SL HH-Listing 2023
- Tanzania (1): AAS 2023
- Uganda (4): AAS 2018, AAS 2019, UNPS 2019/20, AAS 2020/21.

BUILDING CAPACITY IN DATA USE

8

countries supported in strengthening data use, through training on statistical concepts, SPSS analysis, policy briefs and factsheets preparation, and results-based Monitoring & Evaluation (M&E) and impact assessments

- Burkina Faso
- Cabo Verde
- Cambodia
- Ethiopia
- Georgia
- Senegal
- Sierra Leone
- Uganda

290

data users (government staff and researchers) trained in data analysis, dashboard development, policy briefs and factsheets preparation, impact evaluation, and policy processes

20

local researchers awarded research grants to produce policy-oriented papers designed to inform national agricultural policies

LIBERIA, 2024. / PHOTO BY ANDREW ESIEBO



CAMBODIA, 2024. / PHOTOS VIA 50X2030.



SPOTLIGHT

CAMBODIA'S SUCCESSFUL JOURNEY TO BUILD STRONG AGRICULTURE DATA SYSTEM

Cambodia has been a key partner in the Initiative since 2020. Prior to its engagement with 50x2030, Cambodia primarily relied on the 2013 Agriculture Census for agricultural planning, shaping policies and programs accordingly. Through collaboration with 50x2030, the country has progressively developed a robust agricultural data system that generates high-quality indicators supporting evidence-based policymaking, national and sectoral planning, and program implementation.

Capacity Building

Throughout the duration of the program, the National Institute of Statistics (NIS) and the Ministry of Agriculture, Forestry and Fisheries (MAFF), among other institutions, have significantly enhanced their technical expertise to administer regular agricultural surveys and interpret results, transforming findings into reliable information for integration into national strategies and decisions. The experience and competencies acquired through the 50x2030 Initiative have been incorporated into Cambodia's comprehensive statistical framework and leveraged across other national initiatives, such as the Agriculture Census, fostering consistency and alignment in data generation and utilization for policy development.

Production of Quality Data

The partnership with 50x2030 facilitated six rounds of the Cambodia Agriculture Survey (CAS), generating survey reports, multidimensional tables and anonymized datasets, which are publicly available and accessible through the country's National Data Archive (NADA) platform. Cambodia has adopted CAPI-based data collection methods, maintained complete questionnaire templates in both English and Khmer, progressively acquired the skills to efficiently conduct field operations with minimal external assistance, and independently produce and disseminate tabulations and thematic analyses. With more than 100,000 agricultural household interviews conducted, over 900 MAFF staff and 1,500 NIS personnel trained across all survey phases, the Initiative has played a pivotal role in enhancing national statistical capacity, enabling Cambodia to autonomously oversee the entire agricultural data production cycle.

Optimization of Data Utilization

Information from the CAS has directly informed the National Agricultural Development Policy 2022-2030 (NADP 2022-2030) and the agricultural Key Performance Indicators under Cambodia's Pentagonal Strategy, which articulates the country's development agenda for the next quarter century. Additionally, CAS data has enabled Cambodia to report on four principal farm-based SDG indicators (2.3.1, 2.3.2, 2.4.1, and 5.a.1). As support from 50x2030 concludes, Cambodia is preparing for CAS 2025, which will be entirely government-managed and funded. This initiative reflects Cambodia's notable advancement in agricultural statistics and demonstrates its strong commitment to sustaining progress and ownership for enduring impact in the future.

MILESTONE ACHIEVED

TRANSFORMING DATA INTO ACTIONABLE INFORMATION AND MEASURABLE RESULTS

The 50x2030 Initiative enabled partner countries to transform survey data into actionable knowledge products – including survey, thematic and policy briefs, factsheets, and research papers – which have directly supported evidence-based policymaking and real-time monitoring. By providing training on data analysis, visualization and communication, and knowledge sharing, the Initiative has empowered government officials, researchers, and civil society organizations to produce actionable information for tracking progress and assessing impacts of programs, plans, policies, and investments.

At least **70** key indicators can be generated from 50x2030 surveys

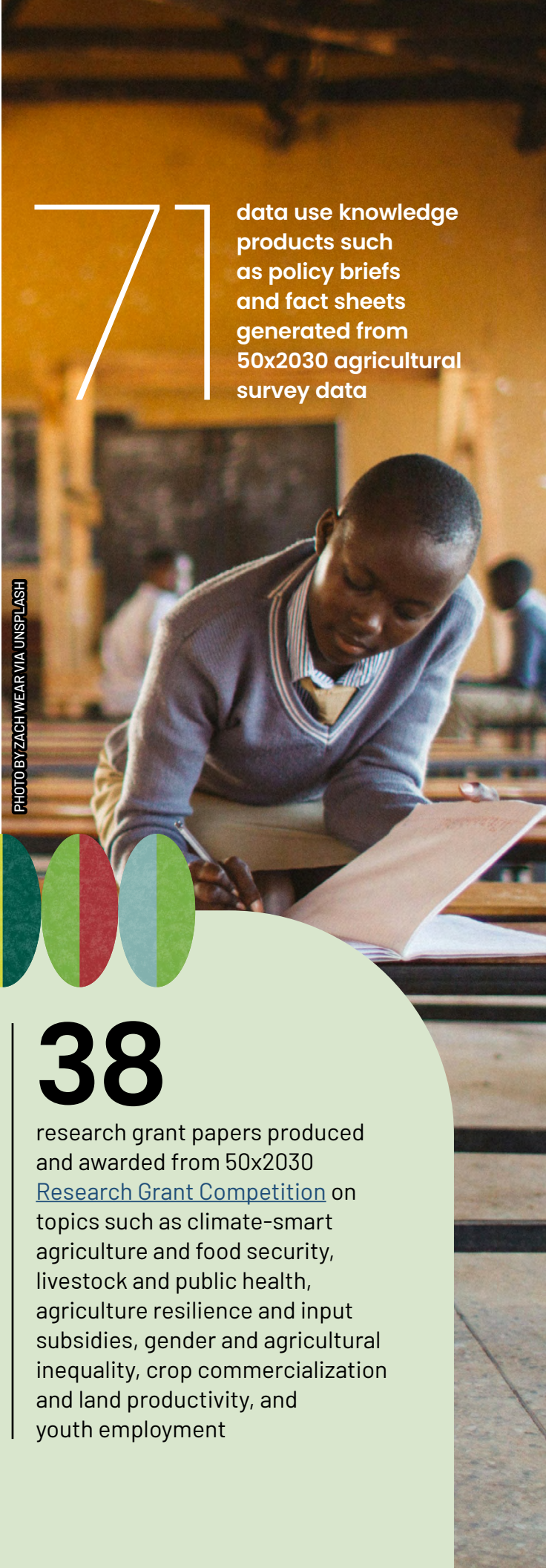
PHOTO BY ZACH WEAR VIA UNSPLASH

71 data use knowledge products such as policy briefs and fact sheets generated from 50x2030 agricultural survey data



38

research grant papers produced and awarded from 50x2030 [Research Grant Competition](#) on topics such as climate-smart agriculture and food security, livestock and public health, agriculture resilience and input subsidies, gender and agricultural inequality, crop commercialization and land productivity, and youth employment



SPOTLIGHT

EVIDENCE OF USE

Documented instances where 50x2030 survey data (or analyses derived from them) were used to formulate, adopt, or monitor national agricultural policies, laws, strategies, or official programs – beyond generic references to “statistics,” reflect the country policymaking-cycle.

- 50x2030 data contributed to policymaking:** National policy formulation (i.e., Georgia Cattle Development Breeding Program), legislative change (i.e., [Georgia Food Loss, Food Waste Reduction and Food Donation Law](#)), strategy design and key performance indicator setting ([Cambodia National Agriculture Development Plan](#) and its [Pentagonal Strategy](#)), and national plan monitoring (Senegal CAADP Biennial report (*Rapport RB Senegal 2019*) and *Senegal Revue Conjointe du Secteur Agricole*). Together, these examples illustrate that data use spans from upstream agenda setting to downstream implementation and monitoring and evaluation (M&E).
- Institutionalization matters:** The experiences of [Senegal](#) and Georgia underscore that policy briefs/factsheets produced inside line ministries can become recognized inputs to policy deliberations—an important intermediate Evidence of Use step that often precedes formal policy change.

GEORGIA./PHOTO BY AGOSTINO TOSELLI VIA PEXELS.



KNOWLEDGE PRODUCTS



MILESTONE ACHIEVED

INNOVATIVE METHODS DEVELOPED FOR MODERN SURVEY PRACTICE

The 50x2030 Initiative produced global public goods that contributed to the modernization of national survey practices in partner countries, resulting in improved quality and efficiency of agricultural data collection. Through rigorous research, innovative methodologies and tools for agricultural surveys have been developed and validated, including modular survey systems, advanced data collection technologies, and the integration of geospatial data sources.

GUIDELINES FOR MODERNIZING SURVEYS

50x2030 produced several technical notes and guidelines to aid countries in improving their survey systems, specifically providing concise and implementation-focused guidance for data production on specific aspects of agricultural data collection.

15

technical notes and guidance documents produced, of which 9 published

INNOVATIVE SURVEY INSTRUMENTS AND TOOLS

50x2030 developed innovative tools to strengthen agricultural surveys and improve data quality. This includes regularly updating questionnaires based on country feedback and exploring digital solutions for data collection and processing.

16

survey instruments published

4

sets of interviewer manuals published



SPOTLIGHT

COLLECTING GPS COORDINATES IN 50x2030 SURVEYS

50x2030 has released guidelines for collecting GPS data during agricultural surveys to improve analysis, fill data gaps, enhance quality control, and support remote sensing applications. The publication covers planning and managing GPS data collection, including equipment selection, questionnaire design, CAPI programming, monitoring, training, data privacy and methods for georeferencing.

The document posits that GPS coordinates from households, farms, and plots when combined with other data provides insights into social, economic, and environmental issues—such as linking climate or market access data to agricultural production and income. This offers potential for improving data analysis to obtain more comprehensive measures and insights on agriculture. Through the 50x2030 Initiative’s survey program, several partner countries have collected household or plot-level GPS data.

PHOTO BY VIETNAM HIDDEN LIGHT VIA PEXELS

ADVANCEMENT IN SURVEY METHODOLOGIES

The 50x2030 Initiative focuses on improving survey methods to collect high-quality, cost-effective, and relevant agricultural data. Its methodological research supports the development of better tools and guidance for effective data collection and analysis.



OPEN FORIS TOOLS USED FOR NATIONAL FOREST MONITORING IN PAPUA NEW GUINEA. / PHOTO VIA FAO.

A LOCAL GIS SPECIALIST AND THE CHIEF OF A RURAL COMMUNITY COLLECT GPS DATA, NEAR LILONGWE, MALAWI. / PHOTO VIA ESRI.

32

journal articles, working papers, and reports published, covering topics including:

Georeferencing and integrating surveys with satellites

Linking agricultural surveys to satellite and geospatial data allows for improved earth observation-based applications – such as crop mapping – and enhances survey data quality through GPS-based land measurement.

Survey design

50x2030 research on improved methods—such as combining phone and in-person interviews for data collection, questionnaire design for land rights reporting, and approaches to address recall bias in crop and fisheries data—enables more effective and efficient survey implementation, lowering costs and reducing respondent burden.

Measurement of agricultural productivity

Crop yields are central to agricultural statistics. 50x2030 research examines measurement errors in yield data collection and puts forward recommended data collection protocols to produce accurate and reliable yield estimates. Recent work highlights, for example, that combining crop-cutting, self-reported yields, and machine learning approaches offers a cost-effective way to improve data quality.

Soil health and natural resources

50x2030 research has explored sampling strategies for incorporating soil testing into agricultural surveys, documented the economic importance of soil health, and rigorously tested potentially scalable methods for objective soil measurement in farm and household surveys. Accurate soil data is essential for understanding productivity constraints and promoting sustainable land management. In addition, studies evaluate the reliability of public geospatial climate data for agricultural analysis and test in-situ weather sensors to enhance climate and weather insights in agricultural surveys.

Crop loss

50x2030 research examines disaster-related crop loss estimates, a crucial indicator for food security and resilience planning. Research into the design of the questionnaire and methods is aimed at enhancing quality of post-harvest crop loss data through scalable modeling approaches that combine survey and model data, reducing costs and improving data reliability.

Women's empowerment

The Women's Empowerment Metric for National Statistical Systems (WEMNS) was integrated into 50x2030 agricultural surveys. It collects high-quality, sex-disaggregated data on women's empowerment, and functions in both face-to-face and phone-based formats.

ENGAGEMENT, COORDINATION AND ADVOCACY

The Initiative emphasizes fostering collaboration among partner organizations and stakeholders. Continuous engagement with governments, research institutions, and international agencies through regular coordination and joint advocacy events has helped align priorities and ensure that efforts are responsive to countries' needs. These efforts facilitated knowledge sharing and supported capacity development, building momentum for sustainable improvements in agricultural data systems.

55+

global, regional, and national events (co-)organized since 2020 to bolster advocacy activities

400+

events and meetings – including technical and advocacy workshops, seminars, missions – held in partner countries and at regional and global levels

+1.6 million

views of 34 surveys recorded in the 50x2030 dedicated collection within the FAO FAM catalogue – the single entry point for discovering and accessing national micro-datasets.

25,000+

50x2030 microdata datasets downloaded from the World Bank Microdata Library

26,000+

downloads of technical documents from the FAO repository

31,000+

unique visitors to the 50x2030 website



DATE HARVEST IN BISKRA PROVINCE, ALGERIA. / PHOTO BY RADWAN MENZER VIA PEXELS.

“The support of the Initiative has been instrumental in getting the Government to understand the need to improve the quality of agricultural statistics in Cabo Verde, Sénégal and Mauritania.”

– DJIBRIL NDOYE,
ECONOMIST STATISTICIAN, WORLD
BANK GROUP TEAM LEADER,
HISWA (CABE VERDE) AND HISWACA
(SENEGAL, MAURITANIA)



THE NEXT PHASE

TIGHTENED PRIORITIES FROM FY26



Building on the successful implementation of the Initiative and the lessons learned over the past six years, 50x2030 will continue providing technical assistance to countries for producing regular, high-quality agricultural data and enhancing its use in policymaking and governance. From FY26, the Initiative will focus its efforts on **four key areas:**

- 1 Implementation of agricultural survey activities in at least 24 countries and release of microdata sets (Angola, Benin, Burkina Faso, Cabo Verde, Cambodia – finalization, Côte d’Ivoire, The Gambia, Ghana, Guinea, Guinea- Bissau, Indonesia, Liberia, Madagascar, Malawi, Mali, Mauritania, Nepal, Niger, Nigeria, Senegal, Sierra Leone, Tanzania, Togo, Zambia)
- 2 Technical assistance to help countries strengthen their data use practices under the new collaborative partner framework approach, focusing on three pillars:
 - i. Increasing data demand, awareness, trust, and transparency
 - ii. Fostering data literacy and building capacity to use data for policy
 - iii. Turning data into evidence for policy useAdditionally, new data analytics products and the 50x2030 data dashboard will be rolled out
- 3 Enhancement of resource mobilization approach through cultivating new donors and expanding strategic partnerships with existing donors beyond financing
- 4 Focus on implementing methodological research on priority topics (i.e., use of technology to fill data gaps in the livestock subsector) and deliver guidelines, workshops and seminars to support adoption of improved methods

PHOTO BY QUANG NGUYEN VINH VIA PEXELS.

SPOTLIGHT

LEVERAGING TECHNOLOGY TO IMPROVE LIVESTOCK DATA

An estimated 600 million poor small farmers earn their livelihoods from livestock, making it central to household income, food security, and nutrition. The demand for livestock products, which is already substantial, is expected to grow by as much as 50 percent by 2050 (FAO, 2020). Despite the role of livestock in rural livelihoods, significant data gaps persist, including fundamental statistics like number of livestock reared and their production. With the support of the Gates Foundation, the 50x2030 Methods & Tools Development Component is undertaking an innovative methodological work program aimed at filling these critical gaps by developing and validating novel approaches for livestock data collection. It will assess the feasibility of using computer vision and artificial intelligence to obtain high-quality data on livestock enumeration, species identification, and live weights, leveraging images collected

as part of an upcoming methodological study in Tanzania. If successful against benchmark measurements, these new approaches will allow countries to move beyond the limitations of self-reported methods, improving data quality while potentially reducing respondent burden.

The study will also pilot high-frequency mobile phone surveys to better understand the effects of seasonality and recall bias in current approaches for collecting data on milk production and herd dynamics. This mixed-mode approach is being tested as a potential cost saving and data quality-enhancing method for national-scale adoption.

These technology-driven solutions aim to generate actionable, higher-quality livestock data to support better agricultural policy and food security planning.



LIVESTOCK AUCTION IN TANZANIA. / PHOTO VIA WORLD BANK

05.2

FUTURE PROSPECT

SEIZE OPPORTUNITIES

Global agricultural production is projected to grow over the next decade, driven by rising food consumption and productivity improvements. In this context, countries will need reliable, high-quality agricultural data to support evidence-based investment decisions, formulate effective policies, and guide the design, monitoring, and evaluation of related programs. 50x2030 aims to address this need by finding ways to:



CHILD IN NALERIGU, GHANA. / PHOTO BY ELSA BOATH VIA PEXELS.

- Scale up the integrated survey program to meet data demand
- Enhance survey modules to include indicators on climate shocks, emissions, market integration, and food insecurity
- Modernize and strengthen national agricultural data systems through capacity building, and alignment with international standards, and digital innovation
- Strengthen data-to-action approach and promote cycle of data-driven decision-making
- Share 50x2030 datasets on global platforms on food security, sustainability, agriculture development for monitoring and tracking
- Reinforce and enhance the 50x2030 engagement model for sustainable financing and country ownership

DELIVER IN 2030

WHAT WE AIM TO ACHIEVE

By 2030, the Initiative aims to consolidate progress achieved to date while significantly scaling up its reach and impact. This includes strengthening national agricultural data systems, deepening country ownership, and ensuring the sustainable production and use of high-quality data. At the same time, the Initiative will reinforce its implementation capacity to sustain and scale results over time with the pace and breadth of this expansion dependent on the availability of adequate funding.

Secure new investment from World Bank IDA/IBRD for agricultural statistics, mitigating the effects of tightening fiscal space and declining public funding for statistics

Raise fresh contributions from existing and new donor partners (estimated at 15M–20M USD), addressing increased competition for limited donor resources

Implement and close data production/data use activities in all partner countries while addressing operational and institutional challenges—including political uncertainty in some contexts; publish studies/guidelines on agricultural survey methods and tools; establish 50x2030 partner hubs to help build and sustain country capacity on agricultural statistics

Ensure 50x2030 data and products are publicly available and widely used by governments, the private sector, and other stakeholders, addressing constraints related to data accessibility and reluctance to release microdata; prepare the next phase of the Initiative strategy

06.

ANNEXES



PHOTO BY GADUYA BAYONGA VIA PEXELS.

ANNEX 1

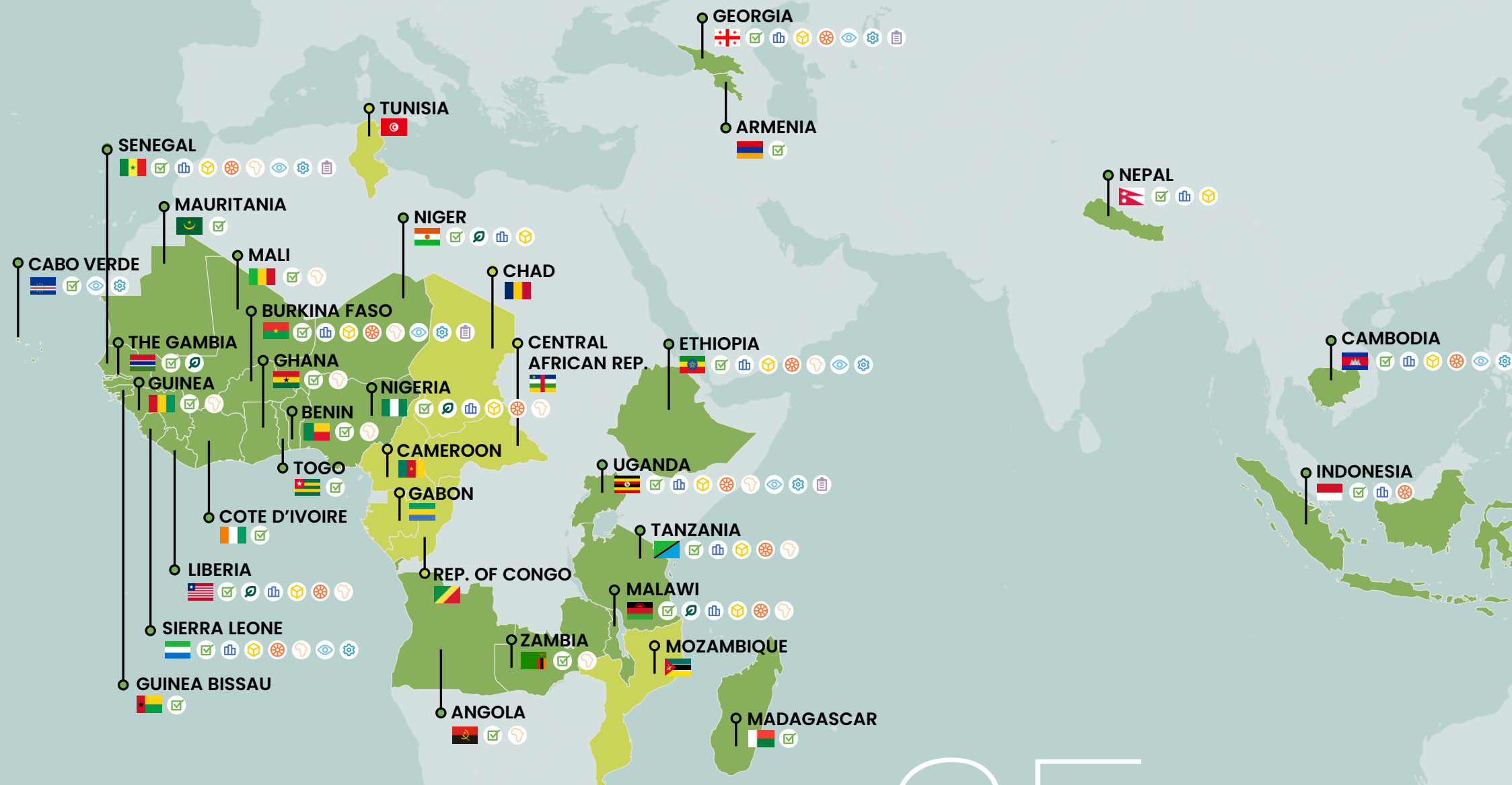
COUNTRY ACTIVITIES

28.

countries onboarded and/or implementing activities

7.

countries onboarding and/or preparatory phase



- Survey/Pilots/Listing completed/ongoing
- Implemented alignment of agriculture census with agricultural surveys
- Statistical survey report/bulletin / Survey/Census Data Sets available
- Microdata available
- SDG indicators computed
- CAADP indicators monitored
- Data Use Assessment or Rapid Needs Assessment conducted
- Data Use Awareness Workshop and/or Data Use Training conducted
- Policy Briefs produced

35 COUNTRIES ENGAGED

(as of June 30, 2025)



Survey/Pilots/Listing completed/ongoing



Implemented alignment of agriculture census with agricultural surveys



Statistical survey report/bulletin/ Survey/Census Data Sets available



Microdata available



SDG indicators computed



CAADP indicators monitored¹



Data Use Assessment or Rapid Needs Assessment conducted



Data Use Awareness Workshop and/or Data Use Training conducted



Policy Briefs and factsheets produced

¹ This includes: "CAADP indicators (2.4; 3.1.i; 3.1.ii; 3.1.iv; 3.1.v; 3.1.vi; 3.1.vii) calculated" and or "data informing CAADP 3.2.i, 3.2.ii, 4.1i collected"

COUNTRY ACTIVITIES

Angola

- *Inquérito Continuo Agro-Pecuário e Pesca* (ICAAP) 2023/24 conducted. ICAPP 2024/2025 ongoing
- CAADP indicators monitored (3.2i, 3.2ii, 4.1i)

Armenia

- Agricultural Integrated Survey (AGRIS) 2020 conducted [AGRIS 2020](#). DDI available

Benin

- *Enquête Statistique Agricole* (ESA) 2024 (included Non-Standard Unit and Post-Harvest Losses) conducted. ESA 2025 (included Farm Income, Labor and Productivity, ILP) ongoing
- CAADP indicators monitored (3.2i, 3.2ii, 4.1i)

Burkina Faso

- *Enquête Harmonisée sur le Conditions de Vie des Ménages*, Panel Survey 2021-2022, *Enquête Permanente Agricole* (EPA) 2023, EPA 2024, EPA-Arbiculture 2024, EPA-Fisheries 2024, EMAR 2023 (Market Gardening) conducted. EPA - MEA 2025, LPS 2025 ongoing
- Microdata [EHCVM-P² 2021/22](#), [EPA 2023/2024](#) available
- Statistical survey reports available: [EPA 2023/2024](#)
- SDG indicators 2.3.1, 2.3.2,
- CAADP indicators monitored (3.2i, 3.2ii, 4.1i)
- Rapid needs assessment and Data ecosystem mapping conducted

² *Enquête Harmonisée sur le Conditions de Vie des Ménages*, Panel Survey 2021-2022

- Data use awareness workshops and data use trainings conducted
- Policy briefs and factsheets produced³

Cabo Verde

- *Sistema de Inquéritos Permanentes* (SIP) 2024 (listing) conducted. *INQUÉRITO AGRÍCOLA INTEGRADO* (IAI) 2024/2025 ongoing
- Rapid needs assessment conducted
- Data Use Awareness Workshop and/or Data Use Training conducted

Cambodia

- Cambodia Inter-censal Agriculture Survey 2019; Cambodia Agriculture Survey 2020 (including FIES), 2021 (including ILP), 2022 (including PME), 2023 (including FIES), 2024 (including MEA) conducted
- Statistical survey reports available: [CIAS 2019](#), [CAS 2020](#); [CAS 2021](#); [CAS 2022](#), [CAS 2023](#)
- Microdata [CIAS 2019](#), [CAS 2020](#); [CAS 2021](#); [CAS 2022](#), [CAS 2023](#) available
- SDG indicators 2.3.1, 2.3.2, 2.4.1, 5.a.1
- Data use assessment conducted
- Data use awareness workshop and data use trainings conducted

Cameroon

- Onboarding on hold as of FY25

Central African Republic

- Onboarding on hold as of FY25

Chad

- Onboarding on hold as of FY25

³ IFAD

Cote d'Ivoire

- *Enquête Annuelle Agricole* (EAA) 2024 conducted. EAA 2025 (including ILP) survey preparation ongoing

Ethiopia

- Ethiopia Socio-Economic Survey (ESS) 2018/19, 2021/22; Agriculture Sample Survey 2022/23 conducted
- Microdata [ESS4 2018/19](#), [ESS5 2021/22](#) available
- [Statistical survey report available](#)
- SDG indicators 2.3.1, 2.3.2 and 5.a.1 computed
- CAADP indicators monitored (3.1ii, 3.1vi, 3.2iii, 3.2i, 3.2ii, 4.1i)
- Data use assessment conducted
- Data use awareness workshop and data use training conducted



GPS LAND AREA MEASUREMENT IN UGANDA, /PHOTO BY SYDNEY GOURLAY VIA WORLD BANK.

Gabon

- Onboarding on hold as of FY25

The Gambia

- National Agricultural Sample Census (NASC) pilot completed (in 2024), NASC HH Listing conducted (in 2024), with CORE and community modules of the NASC planned for 2026
- National Agriculture Sample Census (NASC) 2025 Pilot, NASC 2025 – Non-households listing, NASC 2025 HH Listing, conducted
- Implemented alignment of agriculture census with agricultural surveys

Georgia

- Georgian Survey of Agriculture Holdings (GSAH) 2020, 2021, 2022, 2023; and Survey of Production Methods and Environment module 2021 conducted
- Statistical survey reports available: [GSAH 2020](#), [GSAH 2021](#), [PME 2021](#), [GSAH 2022](#), [GSAH 2023](#)
- Microdata [GSAH 2020](#), [GSAH 2021](#), [PME 2021](#), [MEA 2022](#), [GSAH 2022](#) available
- SDG indicators 2.3.1; 2.3.2; 2.4.1; and 5.a.1 computed
- Data use assessment conducted
- Data use awareness workshop and data use trainings conducted
- Policy briefs and factsheets produced

Ghana

- Ghana Annual Agricultural Survey 2023 (listing), GAAS 2023-2024 (including PME, Crop-cutting, Non-Standard Unit) conducted
- CAADP indicators monitored (3.1.iii; 3.2i, 3.2ii, 4.1i)

Guinea

- *Enquête Annuelle Agricole* 2023/2024 conducted. Livestock survey 2025 conducted. EAA 2025/2026 (including PME) ongoing.
- CAADP indicators monitored (3.2i, 3.2ii, 4.1i)

Guinea-Bissau

- Listing 2025 Survey preparation

Indonesia

- Indonesian Statistical Integrated Survey (SITASI) 2020, 2021, SITASI 2023 (pilot survey), SITASI 2024 completed
- Statistical survey report available: SITASI 2020 and 2021; [2024 Agricultural Economic Survey](#), [AES 2024-SDG](#), [AES 2024-Forestry](#), [AES 2024-Fishery](#), [AES 2024-Livestock](#), [AES 2024-Production Value](#), [Production Cost Crops](#), [Horticulture](#), [Estate Crops](#), [AES 2024-SDG indicators](#)
- SDG indicators 2.3.1; 2.3.2; 2.4.1; and 5.a.1 computed

Liberia

- Agriculture Sample Census 2023, Annual Agricultural Survey (AAS) 2024 (including WENS) conducted
- Implemented alignment of agriculture census with agricultural surveys
- Microdata [LAC HH-Listing 2022/23](#),

[LAC-Community 2022/23](#), [LAC HH-Listing 2024](#), [LAC-Community 2024](#) available

- Statistical survey report available [Census 2022/23](#), [AAS 2024 \(including WENS\)](#), [LAC HH-Listing 2024](#), [LAC-Community 2024](#)
- SDG indicator 2.3.1; 2.3.2; 5.a.1 computed
- CAADP indicators monitored (3.2i, 3.2ii, 4.1i)

Madagascar

- *Enquête Annuelle Agricole* (EAA) 2023/2024 and EAA 2024/2025 conducted

Malawi

- Integrated Household Survey (IHS) 2019/20, Integrated Household Panel Survey (IHPS) 2019, National Census of Agriculture (NACA) 2024/25 conducted
- Implemented alignment of agriculture census with agricultural surveys
- Statistical Reports available: [IHS 2019/20](#); [IHPS 2019](#)
- Microdata [IHS 2019/20](#), [IHPS 2019](#) (dataset includes full long-term panel, including year 2019) available
- SDG indicators 2.3.1, 2.3.2 and 5.a.1 computed
- CAADP indicators monitored (3.2i, 3.2ii, 4.1i)

Mali

- *Enquête Agricole de Conjoncture* (EAC) 2024-2025 conducted. *Enquête Arboriculture et Horticulture* (EAR 2024/2025) (arboriculture and horticulture), Livestock Productivity Survey (LPS), EAC 2025/2026

- (including MEA) survey preparation
- CAADP indicators monitored (3.2i, 3.2ii, 4.1i)

Mauritania

- Pilot study survey on Harvest Losses 2023 conducted; *Enquête auprès des Ménages et Exploitants Agricoles et Agro-Pastoraux* (EMEAP) 2024 (pilot) conducted. *Enquête auprès des Ménages et Exploitants Agricoles* (EMEA) 2025 preparation ongoing

Mozambique

- Onboarding on hold as of FY25



Nepal

- Pilot Agriculture Integrated Survey (PAGRIS) 2019, Commercial Livestock Integrated Survey 2021 conducted; Nepal Agriculture Survey (NAS) 2023 preparation. NAS 2025 listing and main survey (including MEA) ongoing.
- Microdata PAGRIS 2019, [CLIS 2021](#) available
- Statistical survey report available: PAGRIS 2019, [Livestock Commercial Survey](#)

ASSISTANCE TO THE GEORGIAN AGRARIAN ISSUES COMMITTEE OF PARLIAMENT. / PHOTO VIA IFC 2020.



Niger

- Enquête Pertes Agricoles Post-Récoltes (EPPR) 2024 (Post-Harvest losses) conducted. Enquête Prévisions et Estimations Récoltes (EPER) 2025, Recensement Général de l'Agriculture et du Cheptel (RGAC) 2026 preparation
- Implemented alignment of agriculture census with agricultural surveys
- Statistical survey report available: EPPR 2024
- Microdata available: [EPPR 2024](#)



PMT MISSION TO TANZANIA IN OCTOBER 2023. / PHOTO VIA WORLD BANK.

Nigeria

- General Household Survey Panel (GHS) 2018/19, Nigeria Agriculture Sample Census (NASC) 2022, and National Agricultural Sample Survey (NASS) 2023 conducted. Integrated agricultural survey (IAS) 2025 preparation cancelled
- Implemented alignment of agriculture census with agricultural surveys
- [National agricultural sample census 2022 report](#) (Listing and Community), [National Agricultural Sample Survey \(NASS\) 2023](#) available
- Microdata [GHS 2018/19](#), [NASC 2022](#)

- [Community Survey, NASC 2022](#)
- [Agricultural Sample census, NASS 2023](#) available

- SDG indicators 2.3.1, 2.3.2 and 5.a.1 computed
- CAADP indicators monitored (3.1iv, 3.1vi, 3.2i, 3.2ii, 4.1i)

Republic of Congo

- Onboarding on hold as of FY25

Senegal

- *Enquête Agricole Annuelle* (EAA) 2017/18, 2018/19, 2019/20, 2020/21 (with PME), 2021/22 (with ILP), 2022/23 (with MEA), 2023/24 conducted. EAA 2024/2025 (including ILP) conducted
- Microdata [EAA 2017/18](#), [EAA 2018/19](#), [EAA 2019/20](#), [EAA 2020/21](#), [EAA 2021/22](#), [EAA 2022/23](#) available
- Statistical survey report available: EAA 2019/20, EAA 2020/21, EAA 2021/22, EAA 2022/23 – Exploitations Agricoles Hors Ménages, EAA 2022/23
- SDG indicators 2.3.1; 2.3.2; 5.a.1 computed
- CAADP indicators monitored (2.4, 3.1i, 3.1ii, 3.1iv, 3.1vi, 3.2i, 3.2ii, 3.2iii, 4.1i)
- Data use assessment conducted
- Data use awareness workshop and data use training conducted
- Policy briefs and factsheets produced



SENEGAL "DATA AWARENESS WORKSHOP". / PHOTO BY 50x2030.

Sierra Leone

- Sierra Leone Non-Standard Units Survey 2023 and Annual Agricultural Survey (AAS) 2023, AAS 2024 (including WEN, Post-harvest) conducted. SLAAS 2025 survey preparation completed
- Microdata [SLAAS 2023](#), [SL HH-Listing 2023](#) available
- Statistical survey report available: [Listing \(SLLIST\) 2023](#), [SLAAS 2023](#), [SLAAS 2024](#)
- SDG indicators 2.3.1, 2.3.2, 5.a.1
- CAADP indicators monitored (3.2i, 3.2ii, 4.1i)
- Rapid needs assessment and data ecosystem mapping conducted
- Data use awareness workshop and data use training conducted

Tanzania

- Non-standard unit survey 2023 and Annual Agricultural Survey (AAS) 2023, AAS 2024 (included MEA, WEN) conducted. AAS 2025 (including PME) survey preparation ongoing
- Microdata AAS 2023 available
- Statistical survey report available: AAS 2023
- SDG indicators 2.3.1, 2.3.2, 5.a.1
- CAADP indicators monitored (2.4, 3.1i, 3.1ii, 3.1iv, 3.2i, 3.2ii, 3.2iii, 4.1i)

Togo

- *Système permanent d'Enquêtes* (SPE) 2024 Pilot conducted. SPE 2025 (including ILP, RNA 2025 Complementary module on agriculture production) ongoing

Tunisia

- Onboarding on hold as of FY25

Uganda

- Annual agricultural survey (AAS) 2018 second season, 2019, 2020; Uganda National Panel Survey (UNPS) 2019/20; Uganda Harmonized and Integrated Survey (UHS) 2021/22 conducted
- [Statistical survey reports available: AAS 2018](#), [AAS 2018 Statistical Brief](#), [AAS 2019](#), [AAS 2019 Statistical Brief](#), [AAS 2020](#), [UHS 2021/22](#)
- Microdata AAS 2018, AAS 2019, [UNPS 2019/20](#), [AAS 2020](#) available
- SDG indicators 2.3.1; 2.3.2; and 5.a.1 computed
- CAADP indicators monitored (2.4, 3.1i, 3.1ii, 3.1iv, 3.1vi, 3.1iii, 3.2i, 3.2ii, 3.2iii, 4.1i)
- Data use assessment conducted
- Data use awareness workshop and data use training conducted
- Policy briefs and factsheets produced

Zambia

- Integrated agricultural survey (IAS) 2024 conducted, Crop Forecasting survey 2025 (CFS 2025) conducted. IAS 2025 ongoing
- CAADP indicators monitored (3.2i, 3.2ii, 4.1i)

List of methodology related Technical Notes and guidance documents published on the 50x2030 website

- Technical note on [GPS Coordinate Collection in 50x2030 Surveys](#)
- Technical note on [Land Area Measurement](#)
- [Combining Food Loss Modelling Approaches with Farm Surveys](#)
- [Post-Harvest Losses](#)
- [Non-Standard Units](#)
- [Guide to 50x2030 Data Collection Approach: Questionnaire Design](#)
- [Guide to 50x2030 Survey Tools and SDG Indicators 5.a.1](#)
- [Guide to Promoting Data Use](#)
- [Guide to 50x2030 Sampling Strategy](#)

List of methodology related tools and instruments

- 50x2030 reference questionnaires including those for the CORE as well as the ILP, PME, MEA, and ILS rotating modules, updated on a periodic basis, with most designed for both the household and non-household sectors. Additional questionnaire modules developed for optional expansion by countries, such as the questionnaire package on measuring access and use of digital farmer services.

- Survey Solutions programs for each 50x2030 reference questionnaire that facilitate real-time and post-facto data monitoring and improvements – 5 countries (Malawi, Tanzania, Nigeria, Ethiopia, Uganda) that adopted Survey Solutions in their survey operations.
- Enumerator manual packages for the 50x2030 reference questionnaires, to facilitate smooth and consistent training and implementation.
- Development of a [new feature in Survey Solutions](#) to allow for land area measurement and georeferenced plot boundary collection directly with the CAPI tablet, bypassing the need for a separate GPS device
- R packages aimed at facilitating data management and monitoring (susometa for creating data frames from Survey Solutions' questionnaire metadata; susoreview for identifying issues and streamlining the automated review and rejection workflow; and, tbls50x30 for producing tables to monitor survey indicators and their components for 50x2030), with a broader survey management system under development
- Questionnaire on Women's Empowerment Metric for National Statistical Systems developed and piloted in 3 partner countries, in collaboration with IFPRI, Emory University, and Oxford University.

- Testing of publicly available tools for potential integration with 50x2030 survey operations aimed at in-situ measurement of critical domains related to agriculture, including portable in-field soil scanners and all-in-one automatic weather stations

List of published methodology related journal articles, working papers, and reports (also linked on the 50x2030 website)

Georeferencing and integrating surveys with satellites

- [Understanding the Requirements for Surveys to Support Satellite-Based Crop Type Mapping: Evidence from Sub-Saharan Africa](#) (Remote Sensing)

Survey design

- [Recall length and measurement error in agricultural surveys](#) (Food Policy)
- [Integrated sampling design for agricultural and socio-economic households surveys: Overview and application in Uganda Harmonized Integrated Survey](#) (Statistical Journal of the IAOS, special section)
- [From necessity to opportunity: lessons for integrating phone and in-person data collection](#) (European Review of Agricultural Economics)

- [Measuring Fisheries Outputs: Evidence from a Randomized Recall Bias Experiment](#) (FAO Statistics Working Paper Series)
- [Nonclassical measurement error and farmers' response to information treatment](#) (Journal of Development Economics)

Measurement of agricultural productivity

- [Survey Measurement Errors and the Assessment of the Relationship between Yields and Inputs in Smallholder Farming Systems: Evidence from Mali](#) (World Bank Policy Research Working Paper Series)
- [Attenuating measurement errors in agricultural productivity analysis by combining objective and self-reported survey data](#) (Journal of Development Economics)
- [Yielding Insights: Machine Learning-Driven Imputations to Filling Agricultural Data Gaps](#) (World Bank Policy Research Working Paper Series)

Soil health and natural resources

- [Is dirt cheap? The economic costs of failing to meet soil health requirements on smallholder farms](#) (Agricultural Economics)
- [Adding soil sampling to household surveys: Information for sample design from pilot data](#) (Geoderma)

Crop loss

- [Measuring Disaster Crop Production Losses Using Survey Microdata: Evidence from Sub-Saharan Africa](#) (World Bank Policy Research Working Paper Series)
- [Research on the Measurement of Harvest and Post-Harvest Losses: Combining food loss modelling approaches with farm surveys to improve on-farm loss estimates and reduce data collection costs](#) (50x2030 website)
- [Research on the measurement of post-harvest losses: Minimum losses by commodity and region: insights from the literature](#) (FAO Statistics Working Paper Series)
- [Combining farm and household surveys with modelling approaches to improve post-harvest loss estimates and reduce data collection costs](#) (Statistical Journal of the IAOS, special section)
- [The Impacts of Disasters on African Agriculture: New Evidence from Micro-Data](#) (World Bank Policy Research Working Paper Series)
- [Research on the Measurement of Harvest and Post-Harvest Losses: On-Farm Storage Loss Model to Improve National Estimates and Reduce Data Collection Costs](#) (50x2030 website)
- [Substantial impacts of climate shocks in African smallholder agriculture](#) (Nature Sustainability)

Women's empowerment

- [The Women's Empowerment Metric for National Statistical Systems \(Wemns\) Module: Development and Psychometric Assessment of a Preliminary Phone Survey Instrument](#) (SSRN)
- [Women's Empowerment Metric for National Statistical Systems \(WEMNS\): Development and Psychometric](#)

Properties of a Face-to-Face Survey Module

- [Measuring Women's Empowerment in National Surveys Development of the Women's Empowerment Metric for National Statistical Systems \(WEMNS\)](#) (IFPRI Discussion Paper)

Additional topics

- [The 50x2030 Initiative and production of SDG 2 indicators: Country challenges and experiences](#) (Statistical Journal of the IAOS, special section)
- [Facilitating data use for decision making: 50x2030's approach](#) (Statistical Journal of the IAOS, special section)
- [The integration of socio-economic and agricultural surveys by national statistical offices: The case of the Uganda Integrated Household Survey](#) (Statistical Journal of the IAOS, special section)
- [From agricultural statistics to zero hunger: How the 50x2030 Initiative is closing data gaps for SDG2 and beyond](#) (Statistical Journal of the IAOS, special section)
- [Closing the data gap in agriculture through sustainable investment in the data value chain: Realizing the vision of the 50x2030 Initiative](#) (Statistical Journal of the IAOS, special section)
- [Individual land rights: Filling data gaps with the 50x2030 Initiative](#) (Statistical Journal of the IAOS, special section)
- [Are you s\(ec\)ure? Assessing the sensitivity of land tenure security estimates to survey design choices](#) (Food Policy + 50x2030 website)
- [Review: Purchased agricultural input quality and small farms](#) (Food Policy)
- [Making Time Count: A Machine Learning Approach to Predict Time Use in Low-Income Countries from Physical](#)

Activity Tracking Data

- [Improving the Quality of Survey Estimates from Longitudinal Studies: An Application to LSMS Panel Surveys](#) (World Bank Policy Research Working Paper Series)
- [SPIA Uganda Report 2025: Agricultural Diversity Under Stress](#) (CGIAR-SPIA report with collaboration from 50x2030; [here](#))

List of Data Use related - Research Competition Papers from the Data Use Grant Competition published on 50x2030.org

Cambodia

- [Can Crop Commercialization Help Promote Land Productivity? Evidence from Cambodia's Paddy, Maize, and Cassava Farming](#). Research Competition Paper from Cambodia, 2022
- [Sources of Information Diffusion and Adoption of Agricultural Technologies: Evidence from Cambodia](#). Research Competition Paper from Cambodia, 2022
- [Impact of farmer associations on sales and crop diversification](#). Research Competition Paper from Cambodia, 2021
- [Productivity and Market Participation: Cambodian Rice Farmers](#). Research Competition Paper from Cambodia, 2021

Ethiopia

- [Youth Employment and Dynamics in Rural Non-Farm Enterprises \(RNFE\) in Ethiopia](#). Research Competition Paper from Ethiopia, 2022
- [The Impact of Roads on Household Income in Rural Ethiopia](#). Research Grant Competition Paper from Ethiopia, 2022
- [Employment Opportunities and Income Sources in the Face of the COVID-19](#)

Pandemic: Panel Data Evidence from Ethiopia

- [Research Competition Paper from Ethiopia, 2021](#)
- ["Health is wealth": the impact of health insurance on poverty incidence among rural households in Ethiopia](#). Research Competition Paper from Ethiopia, 2021
- [Migration, Remittances and Rural Agricultural Transformation in Ethiopia](#). Research Competition Paper from Ethiopia, 2021

Georgia

- [Gender Inequalities in Income and Land Access Constrain Agricultural Productivity in Rural Georgia](#). Research Competition Paper from Georgia, 2022
- [Concept of a State Support Programme aimed at Increasing Wheat Production in Georgia](#). Research Competition Paper from Georgia, 2022
- [Analysis of the Key Factors Affecting the Productivity of Cereal Crops in Georgia](#). Research Grant Competition Paper from Georgia, 2021
- [Adoption of modern production practices and agro-technical activities in specific sub-sectors of agriculture of Georgia](#). Research Competition Paper from Georgia, 2021
- [The Role of Irrigation Development and Its Impact on Various Indicators of Agricultural Sector Competitiveness](#). Research Competition Paper from Georgia, 2021

Senegal

- [Effect of Seed and Fertilizer Subsidies on the Technical Efficiency of Rice Farmers in Senegal](#). Research Competition Paper from Senegal, 2022. Also available in [French](#)
- [Resilience Strategies to Agricultural Shocks and their Effects on Family Farms](#)

- [in Rural Areas in Senegal. Research Competition Paper from Senegal, 2022](#)
- [Agricultural household resilience strategies against climatic and health shocks: Drought and Covid-19 in the Niayes area of Senegal. Research Competition Paper from Senegal, 2021](#)
- [Analysis of the determinants of land security among women agricultural producers in Senegal. Research Competition Paper from Senegal, 2021](#)
- [Differences in agricultural productivity among women and men on small-scale farms in Senegal: Contributions of agricultural innovations. Research Competition Paper from Senegal, 2021](#)

Uganda

- [Climate Smart Agricultural Practices and Food Security: Evidence from Ugandan Maize Farmers. Research Competition Paper from Uganda, 2022](#)
- [Use of Antibiotics in Livestock Production in Uganda. Research Competition Paper from Uganda, 2022](#)
- [Factors Influencing Maize and Cassava Commercialization Among Smallholder Farmers in Uganda. Research Competition Paper from Uganda, 2021](#)
- [Farm Production Diversity, Household Dietary Diversity and Nutrition: Evidence from Uganda's National Panel Survey. Research Competition Paper from Uganda, 2021](#)
- [Determinants of adoption of climate-smart and sustainable coffee production practices and their impacts on coffee productivity. Research Competition Paper from Uganda, 2021](#)
- [Agricultural information and fertilizer use among farmers in Uganda. Research Competition Paper from Uganda, 2021](#)

- [Gendered Effects of Land Ownership on Household Food Security and Welfare: Empirical evidence from Uganda. Research Competition Paper from Uganda, 2021](#)

List of Data Use related - Research Competition Policy Briefs from the Data Use Grant Competition published on 50x2030.org

Cambodia

- [Can Crop Commercialization Help Promote Land Productivity: Evidence from Cambodia's Paddy, Maize, and Cassava Farming. Research Competition Policy Brief from Cambodia, 2022](#)
- [Sources of Information Diffusion and Adoption of Agricultural Technologies: Evidence from Cambodia. Research Competition Policy Brief from Cambodia, 2022](#)

Ethiopia

- [Unlocking the Economic Potential of Rural Ethiopia: How Roads Can Change Livelihoods. Research Competition Policy Brief from Ethiopia, 2022](#)
- [Rural Non-Farm Enterprises Dynamics and Youth Employment Challenges in Ethiopia. Research Competition Policy Brief from Ethiopia, 2022](#)
- [Employment and Income Sources During the COVID-19 Pandemic in Ethiopia. Research Competition Policy Brief from Ethiopia, 2021](#)
- ["Health is Wealth": The Impact of Health Insurance on Poverty Incidence Among Rural Households in Ethiopia. Research Competition Policy Brief from Ethiopia, 2021](#)

Georgia

- [Combatting Gender Inequalities in Rural Georgia: A Call to Action. Research Competition Policy Brief from Georgia, 2022](#)
- [Securing Georgia's Wheat Supply: A Call to Action to Increase Local Production and Reduce Dependence on Imports. Research Competition Policy Brief from Georgia, 2022](#)

Senegal

- [Révolutionner la Riziculture au Sénégal : le Potentiel Inexploité des Subventions aux Intrants et Leur Impact sur la Productivité des Agriculteurs. Research Competition Policy Brief from Senegal, 2022.](#)
- [How Senegal's Farmers are Fighting Back Against Agricultural Shocks: Exploring Resilience Strategies for Family Farms in Rural Areas. Research Competition Policy Brief from Senegal, 2022](#)
- [Determinants of Land Tenure Security Among Women Agricultural Producers in Senegal. Research Competition Policy Brief from Senegal, 2021](#)
- [Resilience Strategies in Response to Drought and COVID-19 Among Senegalese Households. Research Competition Policy Brief from Senegal, 2021](#)
- [Exploring Differences in Agricultural Productivity Among Women and Men on Small-Scale Farms in Senegal. Research Competition Policy Brief from Senegal, 2021](#)

Uganda

- [Determinants of Adoption of Climate-Smart and Sustainable Coffee Production Practices and their Impacts on Coffee Productivity.](#)

- [Research Competition Policy Brief from Uganda, 2021](#)
- [Does Adoption of Climate-Smart Agriculture Improve Food Availability and Access of Ugandan Maize Farmers? Research Competition Policy Brief from Uganda, 2022](#)
- [Use of Antibiotics in Livestock Production in Uganda. Research Competition Policy Brief from Uganda, 2022](#)
- [Agricultural Sources of Information and Intensity of Inorganic Fertilizer Use Among Farmers in Uganda. Research Competition Policy Brief from Uganda, 2021](#)
- [Farm Production Diversity for Better Nutrition Outcomes: Evidence from Uganda's National Panel Survey. Research Competition Policy Brief from Uganda, 2021](#)
- [How Secure Land Ownership Rights for Women Affect Household Food Security. Research Competition Policy Brief from Uganda, 2021](#)
- [Ensuring Land Tenure Security is Critical for Improving Household Welfare. Research Competition Policy Brief from Uganda, 2021](#)
- [Financial Inclusion for Households in Uganda: The Role of Semi-Formal Institutions. Research Competition Policy Brief from Uganda, 2021](#)



KEY EVENTS

FY20

- European Survey Research Association (ESRA) Conference (July 2019)
- ISI World Statistics Congress (August 2019)
- 21st William T. Pecora Memorial Remote Sensing Symposium/38th International Symposium on Remote Sensing of Environment (Pecora 21/ISRSE-38; October 2019)
- IEEE International Workshop on Metrology and Forestry (October 2019)
- University of Michigan's Sustainability and Development Conference (October 2019)
- UNECE-Eurostat Work Session on Statistical Data Confidentiality (October 2019)
- Eighth International Conference on Agricultural Statistics (ICAS-VIII) (November 2019)
- African Commission on Agricultural Statistics (AFCAS), Libreville (November 2019)
- Plenary session on 50x2030 at the 8th International Conference of Agricultural Statistics (ICAS) in New Delhi (November 2019)
- Asia and Pacific Commission on Agricultural Statistics (APCAS), Bali (February 2020)
- Committee on World Food Security (CFS) Advisory Group to the FAO during the Gates Foundation (formerly BMGF) symposium on Bridging the Data



PHOTO VIA FAO.

Divide: Reaching Zero Hunger Requires Better Agricultural Statistics, in Rome (February 2020)

- Fifty-first Session of the United Nations Statistical Commission (March 2020)
- Meeting of the World Bank Household Surveys Working Group (HSWG) in Washington DC (March 2020)
- Side event of the United Nations Statistical Commission (UNSC) in New York (March 2020)
- Data for Accountability Virtual Series organized by Gates Foundation (formerly BMGF) (April 2020)
- WEMNS technical sessions organized by IFPRI (June and July 2020)



OFFICIAL POSTER OF THE GLOBAL DATA USE CONFERENCE FEATURING THE VICE PRIME-MINISTER OF GEORGIA, H.E. LEVAN DAVITASHVILI, WHO SPOKE DURING THE OPENING SESSION ON 30 NOVEMBER 2021.

FY21

- Senegal *Direction de l'Analyse, de la Prévision et des Statistiques Agricoles (DAPSA)* Workshop [*Atelier de partage et d'information sur les indicateurs et données des enquêtes agricoles annuelles (EAA) de 2017 à 2020 au Sénégal*] (November 2020)
- Second arab land conference: monitoring land governance and land tenure security. Masterclass. 50x2030, FAO, UN-Habitat/GLII (February 2021)
- Side event of the United Nations Statistical Commission (UNSC) in New York (February 2021)
- 50x2030 Seminar: integrating surveys and satellites for agricultural monitoring in smallholder farming systems (April 2021)
- Series of SDG webinars for the Arab region. 50x2030, FAO, UN-Habitat/GLII (April 2021)
- Workshop FAO/DAPSA Senegal: *Vers une utilisation renforcée de données probantes pour éclairer le processus de suivi de la RSCA au Sénégal* (May 2021)
- Survey data management, processes and agricultural policies training. FAO, Uganda MAAIF (July 2021)
- Workshop FAO/DAPSA Senegal: *Atelier de validation des notes politiques pour éclairer les décideurs politiques au Sénégal* (July 2021)

FY22

- 50x2030 at the 31st International Conference of Agricultural Economists: Measurement Matters and Agricultural Economists Should Care: How the 50x2030 Initiative can make a difference (August 18, 2021)
- 50x2030 Seminar: Transforming Food Systems in Africa: Resilience through agricultural data (September 30, 2021)
- 50x2030 at World Data Forum: Showcasing how ground data can augment satellite and other tech-based data collection (October 6, 2021)



2024 RETREAT. / PHOTO VIA 50x2030.

FY23

- 50x2030 Retreat (October 2-4, 2022)
- 50x2030 Methods & Tools outreach presentation as part of the Agriculture & Food Forum Learning Series hosted by the World Bank's Agriculture and Food Global Practice (December 7, 2022)
- Presentation of 50x2030 at HARDs meeting (EU Heads of Agriculture, Rural Development and Food security) organized by the European Commission (December 16, 2022)
- A donor consultation event called "Assessing the data 'quantum' leap in agriculture and food systems," jointly organized by the European Commission, IFAD, the Global Donor Platform for Rural Development (GDPRD) and the Global Partnership for Sustainable Development Data (GPSDD)(February 13, 2023)
- Multiple presentations at the Center for the Study of African Economies (CSAE) Conference, including presentation of Methods & Tools research on the use

- of phones surveys for agricultural data collection and measurement of damages and losses (March 19-21, 2023)
- 50x2030 Partnership Council Meeting March 30, 2023: presentation of 50x2030 at the Info point organized by the European Commission (March 23, 2023)
- Presentation of 50x2030 at the Info point organized by the European Commission (March 30, 2023)
- 50x2030 at the ICAS IX Conference:
 - Methods & Tools Component Session and additional individual presentations
 - 50x2030 Session on Data Use for Decision Making (May 17-19, 2023)
- "Data production component of the 50x2030 Initiative: producing more and better data for policy making", organized by FAO (June 13, 2023)
- 5th African Union (AU) – European Union (EU) Agriculture Ministerial Conference (June 30, 2023)



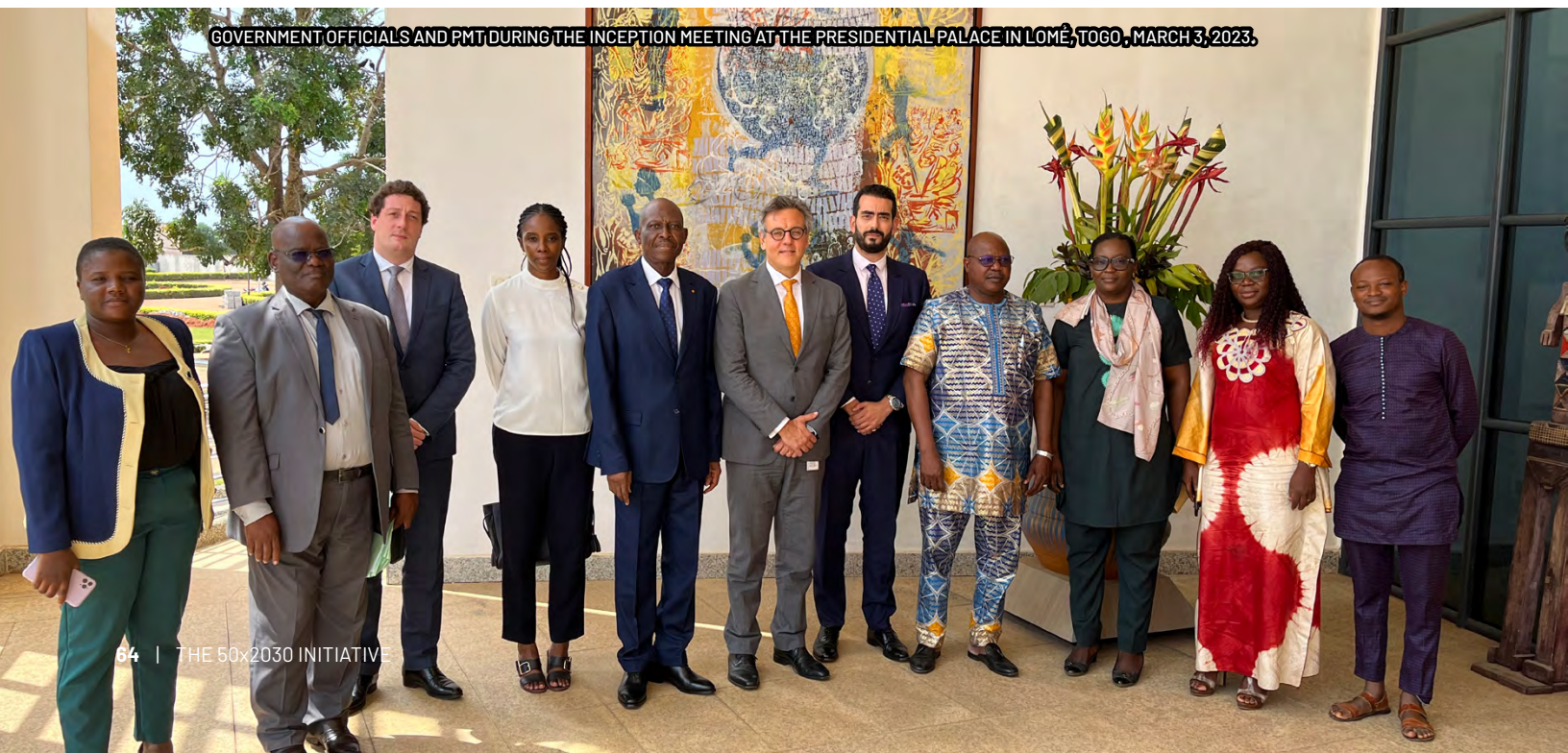
RETREAT IN TODI. / PHOTO VIA 50x2030.

FY25

- 32nd International Conference of Agricultural Economists (ICAE) (August 2024)
- 52nd Committee on World Food Security (CFS)(October 2024)
- FAO and IFPRI Side Event at the 69th session of the Commission on the Status of Women (CSW69)
- UNSC 56 (NY, 4-7 March 2025) pre session event Capacity Development for Relevant, Resilient, and Agile National Statistical Systems: Are We on the Right Track? Session 1: Fostering Sustainability and Institutional Resilience
- 2025 Agri-Chain Investment Forum (Morocco)
- World Bank Poverty Global Practice Retreat
- Data Use Retreat (June 2025)

FY24

- African Commission on Agricultural Statistics 28th session (AFCAS28)
- Asia and Pacific Commission on Agriculture Statistics 30th session (APCAS30), Kathmandu, Nepal (May 2024)
- Committee on World Food Security (CFS) - CFS51
- African Association of Agricultural Economists (AAAE)
- Asian Evaluation Week
- Francophone Africa Risk Finance Knowledge Week
- UN General Assembly 78th Session (UNGA78)
- Sustainable Development Goal 2 (SDG2) Advocacy Hub
- Ghana National Dialogue on Food Security Statistics
- Global Strategy to improve agricultural and rural statistics - Phase II (GSARSII) final year conference



GOVERNMENT OFFICIALS AND PMT DURING THE INCEPTION MEETING AT THE PRESIDENTIAL PALACE IN LOMÉ, TOGO, MARCH 3, 2023.



INSTALLING CLIMATE SENSORS IN UGANDA. / PHOTO VIA WORLD BANK.

ANNEX 4

LIST OF ABBREVIATIONS

AAAE	African Association of Agricultural Economists
AAS	Annual Agricultural Survey
ACReSAL	Agro-Climatic Resilience in Semi-Arid Landscapes
AES	Agricultural Economic Survey
AFCAS	African Commission on Agricultural Statistics
AFCAS28	African Commission on Agricultural Statistics 28th session
AGRIS	Agricultural Integrated Survey
ANG_STAT	Angola Strengthening Statistical Capacity
APCAS	Asia and Pacific Commission on Agriculture Statistics
APCAS30	Asia and Pacific Commission on Agriculture Statistics 30th session
BMGF	Bill and Melinda Gates Foundation
BMZ	Germany's Federal Ministry for Economic Cooperation and Development
CAADP	Comprehensive Africa Agriculture Development Programme
CAPI	Computer-Assisted Personal Interviewing systems
CAS	Cambodia Agriculture Survey
CFS	Committee on World Food Security
CIAS	Cambodia Inter-censal Agriculture Survey
CLIS	Commercial Livestock Integrated Survey (Nepal)
DAPSA	Direction de l'Analyse, de la Prévision et des Statistiques Agricoles, Senegal
DFAT	Australia's Department of Foreign Affairs and Trade
EAA	Enquête Annuelle Agricole (Annual Agricultural Survey)
EAC	Enquête Agricole de Conjoncture (Mali)
EAR	Enquête Arboriculture et Horticulture
EARSPforR – EAC	Eastern Africa Regional Statistics Program-for-Results – East African Community
EHCVM-P	Enquête Harmonisée sur le Conditions de Vie des Ménages, Panel Survey
EMEA	Enquête auprès des Ménages et Exploitants Agricoles
EMEAP	Enquête auprès des Ménages et Exploitants Agricoles et Agro-Pastoraux (Mauritania)
EPA	Enquête Permanente Agricole (Burkina Faso)
EPER	Enquête Prévisions et Estimations Récoltes
EPPER	Enquête Pertes Post-Récoltes

EPPR	Enquête Pertes Agricoles Post-Récoltes (EPPR)
ESA	Enquête Statistique Agricole (Benin)
ESS	Ethiopia Socio-Economic Survey
EU	European Union
FAO	Food and Agriculture Organization of the United Nations
FY	Fiscal Year
GAAS	Ghana Annual Agricultural Survey
GDP	Gross Domestic Product
GHS	General Household Survey
GPS	Global Positioning System
GSAH	Georgian Survey on Agricultural Holdings
GSARS II	Global Strategy to improve agricultural and rural statistics - Phase II
HISWA	Harmonizing and Improving Statistics in West Africa
HISWACA	Harmonizing and Improving Statistics in West and Central Africa
IAOS	International Association for Official Statistics
IAS	Integrated agricultural survey
IBRD	International Bank for Reconstruction and Development
ICAAP	Inquérito Anual à Produção Agro-Pecuaría
ICAE	International Conference of Agricultural Economists
ICAS	International Conference on Agricultural Statistics
IDA	International Development Association
IFAD	International Fund for Agricultural Development
IFPRI	International Food Policy Research Institute
IHPS	Integrated Household Panel Survey
IHS	Integrated Household Survey
ILP	Farm Income, Labor and Productivity
IT	Information Technology
LPS	Livestock Productivity Survey
LSMS-ISA	Living Standards Measurement Study – Integrated Surveys on Agriculture
M&E	Monitoring & Evaluation

MAAIF	Ministry of Agriculture, Animal Industry and Fisheries, Uganda
MAECI	Italy's Ministry of Foreign Affairs and International Cooperation
MAFF	Ministry of Agriculture, Forestry and Fisheries (Cambodia)
MEA	Machinery, Equipment and Assets
NACA	National Census of Agriculture
NADA	National Data Archive
NADP	National Agricultural Development Policy (Cambodia)
NAS	Nepal Agricultural Survey
NASC	National Agricultural Sample Census
NASS	National Agricultural Sample Survey
NIS	National Institute of Statistics (Cambodia)
PAGRIS	Pilot Agriculture Integrated Survey
PME	Production Methods and Environment
RGAC	Recensement Général de l'Agriculture et du Cheptel
RNA	Pilote du Recensement national de l'Agriculture (Togo)
SADC	Southern African Development Community Regional Statistics Project
SDG	Sustainable Development Goal
SIP	Sistema de Inquéritos Permanentes (Cabo Verde)
SITASI	Survei Pertanian Terintegrasi (Indonesian Statistical Integrated Survey)
SLAAS	Sierra Leone Annual Agricultural Survey
SLLIST	Sierra Leone Listing Survey
SLNSU	Sierra Leone Non-Standard Units Survey
SPE	Système permanent d'Enquêtes (Togo)
SPSS	Statistical Package for the Social Sciences
TUN_LAG	Tunisia Emergency Food Security Response
UN	United Nations
UNGA	United Nations General Assembly
UNPS	Uganda National Panel Survey
UNSC	United Nations Statistical Commission
USAID	United States Agency for International Development
WB	World Bank
WEMNS	Women's Empowerment Metric for National Statistical Systems
WEN	Women's Empowerment and Nutrition module

50x2030 INITIATIVE MID-TERM REPORT

PREPARED BY:

MILLICENT GAY TEJADA
CHRISTELLE KOUAME
GIULIA ALTOMARE

DESIGN BY:

NATALIA PÉREZ PENAGOS

THIS PHOTO BY DOLL AND SIMALETTE VIA PEXELS.
BACK COVER PHOTO BY ZDENEK MACHACEK VIA UNSPLASH.



50x2030

DATA-SMART AGRICULTURE

**WORLD BANK
DEVELOPMENT
DATA GROUP**

Via Abruzzi 10,
00187 Rome, Italy

the50x2030initiative@worldbank.org
www.50x2030.org



#50x2030

