

THE 50x2030 INITIATIVE
TO CLOSE THE AGRICULTURAL DATA GAP

ANNUAL WORK PLAN



50x2030
DATA-SMART AGRICULTURE



JULY 1
2020
JUNE 30
2021

TABLE OF CONTENTS

ABOUT THE INITIATIVE	3
OVERVIEW: THE 50x2030 ANNUAL WORK PLAN	4
2020-2021 Work Plan Goals	4
ACTIVITIES, DELIVERABLES AND TIMELINE: 1 JULY 2020 TO 30 JUNE 2021	6
50x2030 Country Activities	7
50x2030 Methods and Tools Activities	13
PROGRAM MANAGEMENT	17
Working Groups and Partnerships	18
Technical Advisory Group	18
Knowledge	19
Conferences	19
Resource Mobilization	20
Outreach and Advocacy	20
Collaborations with the Private Sector	21
Risk Management	21
LOOKING FORWARD	22
ANNEX: 50x2030 TECHNICAL PAPERS PLANNED FOR FY2021	23

ABOUT THE INITIATIVE

The 50x2030 Initiative to Close the Agricultural Data Gap was conceived to fill critical gaps in the availability and use of agricultural data in 50 low- and lower middle-income countries by 2030. It is implemented by the World Bank, the Food and Agriculture Organization of the United Nations (FAO) and the International Fund for Agricultural Development (IFAD), with the financial support and strategic guidance of the United States Agency for International Development (USAID), the Bill and Melinda Gates Foundation (BMFG), Germany's Federal Ministry of Economic Cooperation and Development, Australia's Department of Foreign Affairs and Trade and Italy's Ministry of Foreign Affairs and International Cooperation.

The Initiative looks to build strong, nationally representative survey programs that produce high-quality and timely country-level agricultural data. These survey programs leverage the experiences of the FAO Agricultural Integrated Survey (AGRISurvey) Programme and the World Bank's Living Standards Measurement Study-Integrated Surveys on Agriculture (LSMS-ISA). IFAD will design and implement activities that ensure countries are able to use the data collected.

The Initiative is organized and implemented under the coordination of a Program Management Team (PMT) through activities on (1) Data Production; (2) Methods and Tools Development; and (3) Data Use. Each area of work falls under the responsibility of one program implementing agency, namely FAO for Data Production, the World Bank for Methods and Tools

Development and IFAD for Data Use. Activities within each area of work are designed and implemented in accordance with the decisions taken and direction given by the Partnership Council, the Initiative's highest decision-making body, and in close collaboration with the PMT.

The Initiative, which became operational in 2019, works with partner countries that face major constraints producing the scope, quality, and frequency of agricultural data needed for effective planning, financing, and implementation of national agricultural policies, development programs and investments. In these countries, the Initiative will roll out survey programs, conduct research to enhance quality and cost-effectiveness of survey activities and develop capacity to use agricultural survey data for decision-making. The Initiative will favor the implementation of an integrated survey, which allows countries to produce critical data for policy and investment decision-making and reporting needs, in particular Sustainable Development Goal (SDG) 2 indicators.

Partner countries will receive five-to-eight years of support to conduct multiple rounds of surveys, make survey datasets publicly available and open, and apply the data in key decision processes. Countries will be required to contribute resources to their chosen survey programs and to increase their contributions each year, with the objective of assuming financial and technical responsibility for the survey programs after the agreed upon cycle of support ends.

OVERVIEW: THE 50x2030 ANNUAL WORK PLAN

This annual work plan for the Initiative covers the period from 1 July 2020 to 30 June 2021 (FY2021), the second operational year of the Initiative, and responds to important developments both within the Initiative and in the broader development context. It has been highly impacted this year by the COVID-19 pandemic, which resulted in the need to adjust some of the planned activities. On the other hand, these shifts have allowed additional time to set forth the development and testing of fundamental procedures for the implementation of the Initiative. These include the engagement process for partner countries and the consolidation of working procedures with implementing agencies, among others. The work plan builds on these important foundations.

The plan provides information on country and research activities that will be undertaken by the three implementing agencies (World Bank, FAO and IFAD) in

cooperation with the PMT. It also provides information on the core activities of the PMT, specifically its work with internal and external partners, and on resource mobilization and outreach; the Initiative's results framework; operations coordination; staffing, budget and funding gap projections; and risk and mitigation measures undertaken due to COVID-19 and other events.

2020-2021 WORK PLAN GOALS

Program activities between 1 July 2020 – 30 June 2021 will continue to support the overall aim of the Initiative: to empower and support partner countries to produce and disseminate more, higher quality, and more timely agricultural data as they build sustainable agricultural data systems. For this work plan period, the Initiative has established an ambitious but practical set of goals that include:

COUNTRY PROGRAM IMPLEMENTATION

- Ensuring that countries where surveys have been implemented (Armenia, Cambodia and Georgia) have access to Initiative funding to maintain the planned cycle of activities on data production
- Completing First Integrated Agricultural and Rural Survey fieldwork in Uganda
- Piloting an approach for mapping the agricultural data ecosystem and developing Joint Multi-year Implementation Plans around a common Data Use Framework
- Producing Data Ecosystem Mappings and Reports in six partner countries to inform the development of Joint Multi-year Implementation Plans for Data Use activities
- Beginning Data Use activities in four partner countries
- Developing adequate contingency plans to limit the impact of COVID-19 on field activities at country level

METHODS, TOOLS AND KNOWLEDGE DEVELOPMENT

- Finalizing and disseminating the Initiative's key questionnaire package (including Production, Methods and the Environment, Post-Harvest Losses and Damages and Losses modules)
- Advancing Sustainable Development Goal (SDG) monitoring and research, specifically in the areas of land tenure (SDG 5.a.1 and 1.4.2), post-harvest losses (SDG 12.3.1), and damages and losses (SDG 1.5.1)
- Producing and disseminating maps on crop type and crop yield estimation that are accessible for use by governments, academics, and others, through an easy-to-use online interface
- Finalizing 15 papers/ guidelines on methodological matters central to the mission of the Initiative

STRATEGY, GOVERNANCE AND COORDINATION

- Developing and endorsing strategic documents and coordinating the Initiative's procedures and governance arrangements (results framework and monitoring and evaluation plan; country engagement protocols and procedures; outreach and communication strategy; partnership and collaboration arrangements; resource mobilization and donor agreements).
- Activating the role of the Initiative's Technical Advisory Group (TAG), which advises on issues relating to agricultural or rural statistics, including survey methodologies, data management, gender, and data analysis.

ACTIVITIES, DELIVERABLES AND TIMELINE: 1 JULY 2020 TO 30 JUNE 2021

Under the FY2021 work plan, the PMT will initiate preparation of program implementation plans in six of the Initiatives' pre-approved countries¹ (Cambodia, Ethiopia, Georgia, Nigeria, Senegal, and Uganda). These countries will go through a process in which the data production activities of their existing LSMS-ISA or AGRISurvey program "transition" to the Initiative's integrated survey program.

The Initiative's Partnership Council is scheduled to select two new (i.e. non-pre-approved) countries for inclusion by January 2021. The program

implementing agencies will then be able to start implementing activities implementation from February 2021.

Pending approval by the Partnership Council in October 2020 of the protocol for onboarding² new countries, the window for the submission of country expressions of interest to join the Initiative will be open from 15 January to 15 February 2021. Table 1 presents the target number of new countries to be partnered with the Initiative each year, while Figure 1 shows all countries that were pre-approved for inclusion.

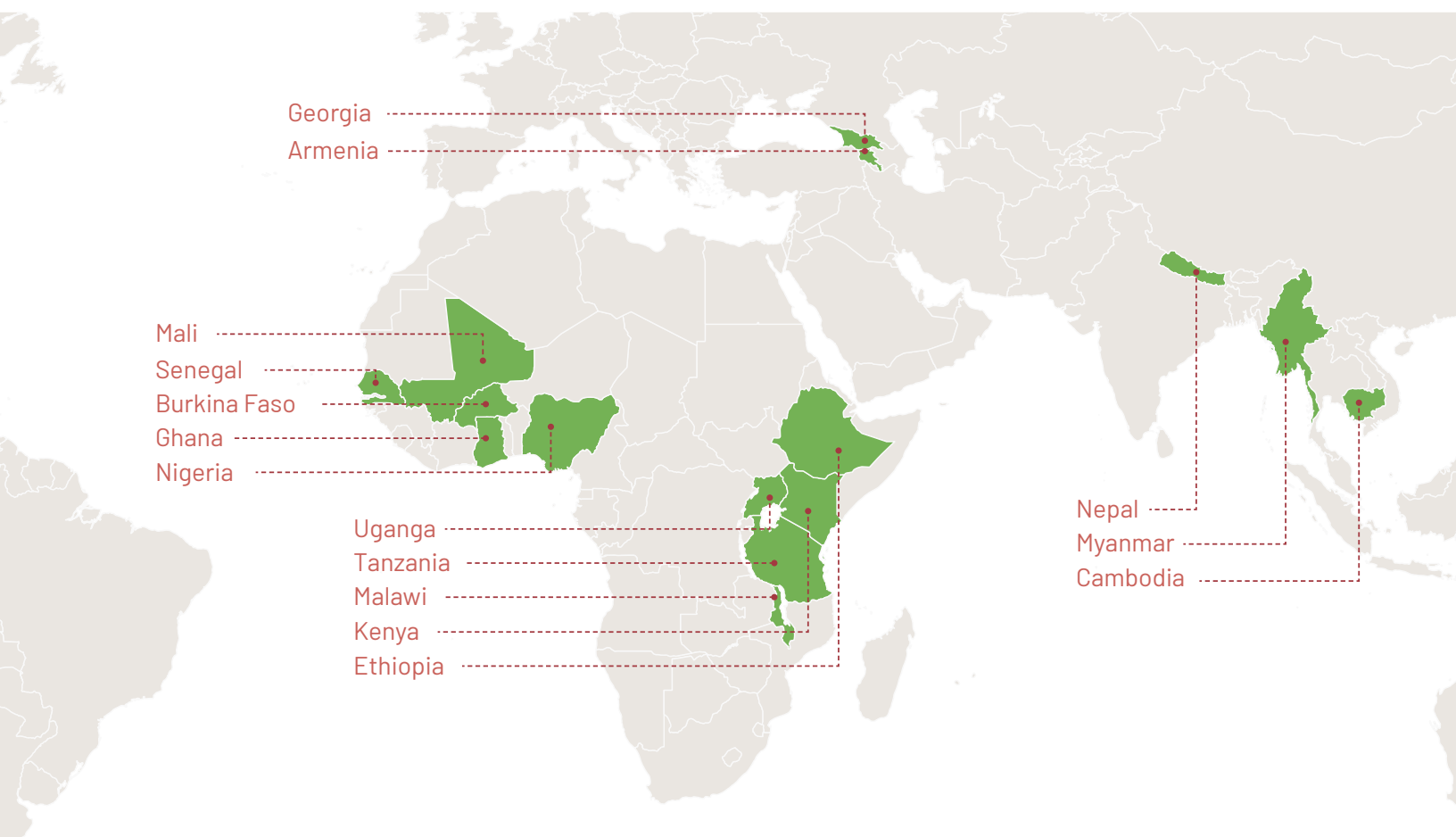
TABLE 1. 50x2030 INITIATIVE PROPOSED TIMELINE FOR COUNTRY PARTNERING

COUNTRY TYPE	FY 2021	FY 2022	FY 2023	FY 2024	FY 2025	FY 2026	FY 2027	TOTAL
Pre-Approved Countries (PAC)	6	6	3	●	●	●	●	15
New Countries (NC)	2	5	6	6	6	6	4	35
Total Countries	8	11	9	6	6	6	4	50

¹ There are 15 countries that were pre-approved for inclusion at the outset of the Initiative because they were already engaged in either the FAO AGRISurvey or the World Bank LSMS-ISA program. The countries are Armenia, Burkina Faso, Cambodia, Ethiopia, Georgia, Ghana, Kenya, Malawi, Mali, Myanmar, Nepal, Nigeria, Senegal, Tanzania and Uganda. The Initiative's remaining 35 countries will be selected on a rolling basis in the coming months and years.

² The process of onboarding countries is constituted by three phases: partnering, planning and, finally, formally committing to the Initiative.

FIGURE 1. 50x2030 ACTIVE COUNTRIES

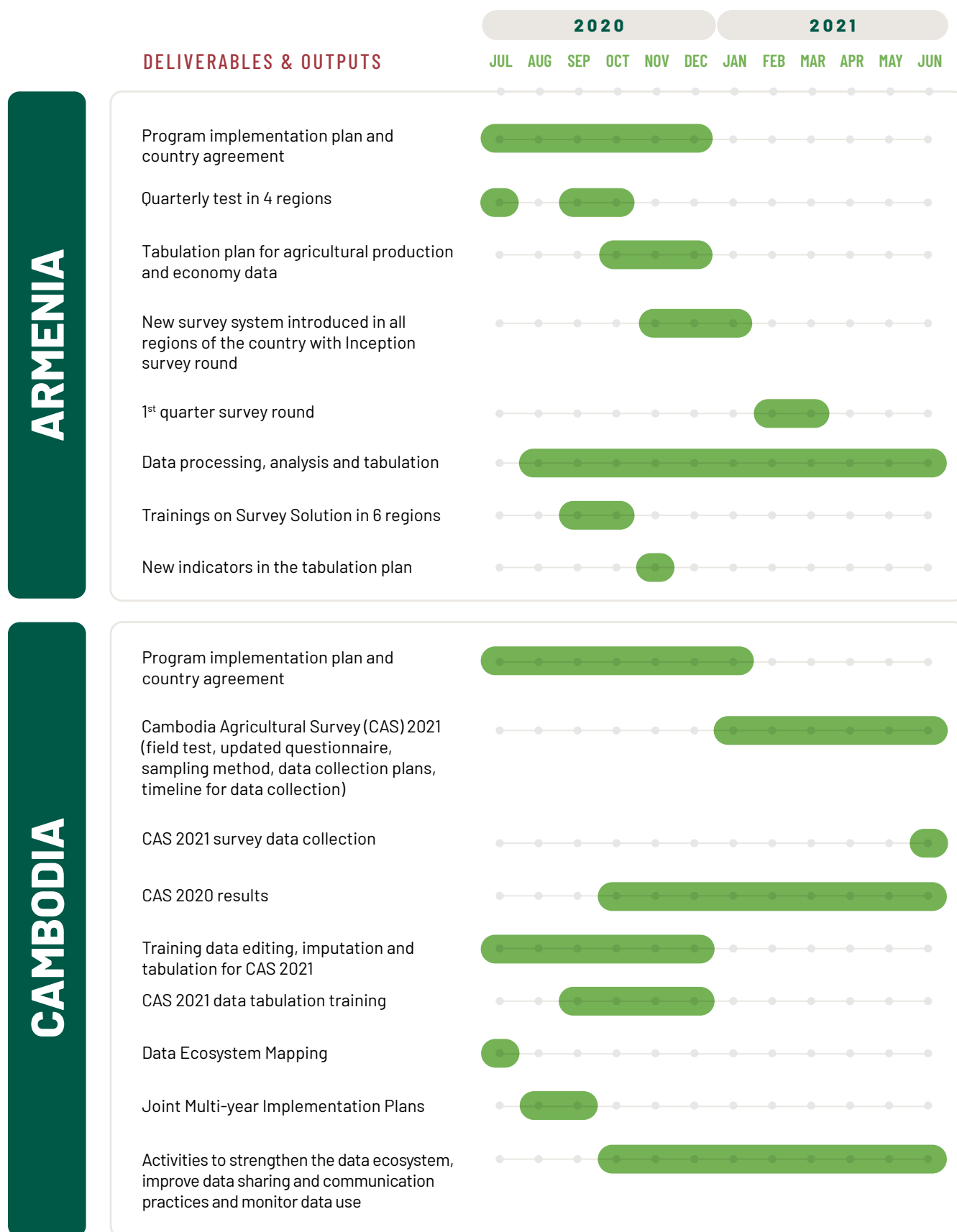


50X2030 COUNTRY ACTIVITIES

Table 2 outlines Initiative activities slated for completion in the countries where it will be active during the work

plan period. Each country is presented along with major deliverables and projected dates of delivery.

TABLE 2. INDICATIVE 50x2030 INITIATIVE DATA PRODUCTION AND DATA USE COUNTRY ACTIVITIES: DELIVERABLES AND TIMELINE, FY2021 (1 JULY 2020 TO 30 JUNE 2021)



ETHIOPIA

DELIVERABLES & OUTPUTS

2020

2021

JUL AUG SEP OCT NOV DEC JAN FEB MAR APR MAY JUN

Program implementation plan and country agreement



Survey preparations



Commercial Farm Survey fieldwork



Ethiopia Socioeconomic Survey (ESS) 4 dissemination



Commercial farm survey dissemination



Training on commercial farm survey



Data Ecosystem report



Joint Multi-year Implementation Plans



Activities to strengthen the data ecosystem; improve data sharing and communication practices activities; and monitor data use - TBD



GEORGIA

Program implementation plan and country agreement



Questionnaire/tools on environment module and SDG 2.4.1



Tablets, laptops, data plans procured



Annual production survey data collection



SDG 2.3.1 and 2.3.2 calculations based on 2019 data set



Environment module and SDG 2.4.1 calculations



MALAWI

5th Integrated Household Survey (IHS5) 2019/20 and Integrated Household Panel Survey (IHPS) data dissemination



NEPAL

DELIVERABLES & OUTPUTS

2020

2021

JUL AUG SEP OCT NOV DEC JAN FEB MAR APR MAY JUN

Questionnaire/tools on economy module



Tablets, laptops, data plans procured



Commercial Holdings Survey 2020



Results of Commercial Holding Survey 2020 disseminated



NIGERIA

Program implementation plan and country agreement



General Household Survey-Panel (GHS)-Panel (LSMS-ISA) preparation



GHS-Panel pilot, including pilot of commercial farm coverage



GHS-Panel (LSMS-ISA) training



SENEGAL

Program implementation plan and country agreement



Production, Methods and the Environment (PME) *Enquête Annuelle Agricole* (EAA 2020-2021), Machinery/Labor (EAA2021-2022)



EAA 2020-2021, 1st and 2nd visits



EAA 2020-2021, processing



EAA 2020-2021 report



EAA 2019-2020



Data processing and data dissemination



Data Ecosystem report



Joint Multi-year Implementation Plans



Activities to strengthen the data ecosystem, improve data sharing and communication practices and monitor data use



TANZANIA

DELIVERABLES & OUTPUTS

2020

2021

JUL AUG SEP OCT NOV DEC JAN FEB MAR APR MAY JUN

Program implementation plan and country agreement

Tanzania National Panel Survey (NPS) 2021/22 preparation

NPS 2021/22 fieldwork

UGANDA

Program implementation plan and country agreement

Integrated Survey Programme (ISP) 2021 survey tools, enumerator manuals and data validation protocols

Annual Agricultural Survey (AAS) 2019 field operations second season

AAS 2019 processing

AAS 2020 for household sector (1st and 2nd visits) findings

ISP 2021 fieldwork

AAS 2018 results (Scientific Use Files-SUF microdata files)

AAS 2019 results

Uganda National Panel Survey (UNPS) 2019/2020 data dissemination

ISP Training for enumerators

Data Ecosystem report

Joint Multi-year Implementation Plans

Activities to strengthen the data ecosystem, improve data sharing and communication practices and monitor data use

NEW COUNTRIES 1 AND 2

DELIVERABLES & OUTPUTS

2020

2021

JUL AUG SEP OCT NOV DEC JAN FEB MAR APR MAY JUN

Program implementation plan and country agreement

Data Ecosystem report (country 1)

Data Ecosystem report (country 2)

Joint Multi-year Implementation Plans

Strengthen the data ecosystem; Improve data sharing and communication practices activities; and Monitor Data Use

50x2030 METHODS AND TOOLS ACTIVITIES

The Initiative's Methods and Tools Development activities aim to generate knowledge to enhance the quality, relevance and cost-effectiveness of Data Production and Data Use outputs and activities.

It will continue expanding the knowledge base of the Initiative to further push the frontier of data collection in agricultural and rural statistics by publishing at least 15 research papers and guidance documents, and additional questionnaire tools that will inform and improve data production operations, both within and

beyond the Initiative. Some of the research papers will result from joint work conducted in cooperation or co-authored with colleagues from national statistical offices or research institutes of partner countries. As data is collected and analysis commences, collaboration with other national researchers will also be pursued for other research areas. For a full list of publications to be produced under this work program, see Annex 1.

The Methods and Tools activities are framed around the following three pillars:

PILLAR 1

INTEGRATION OF SURVEY APPROACHES, to develop, validate and document recommended approaches to implementing the integrated survey systems promoted by the Initiative (such as the design of survey instruments, the sampling approach and the dissemination and analysis of the integrated surveys).

PILLAR 2

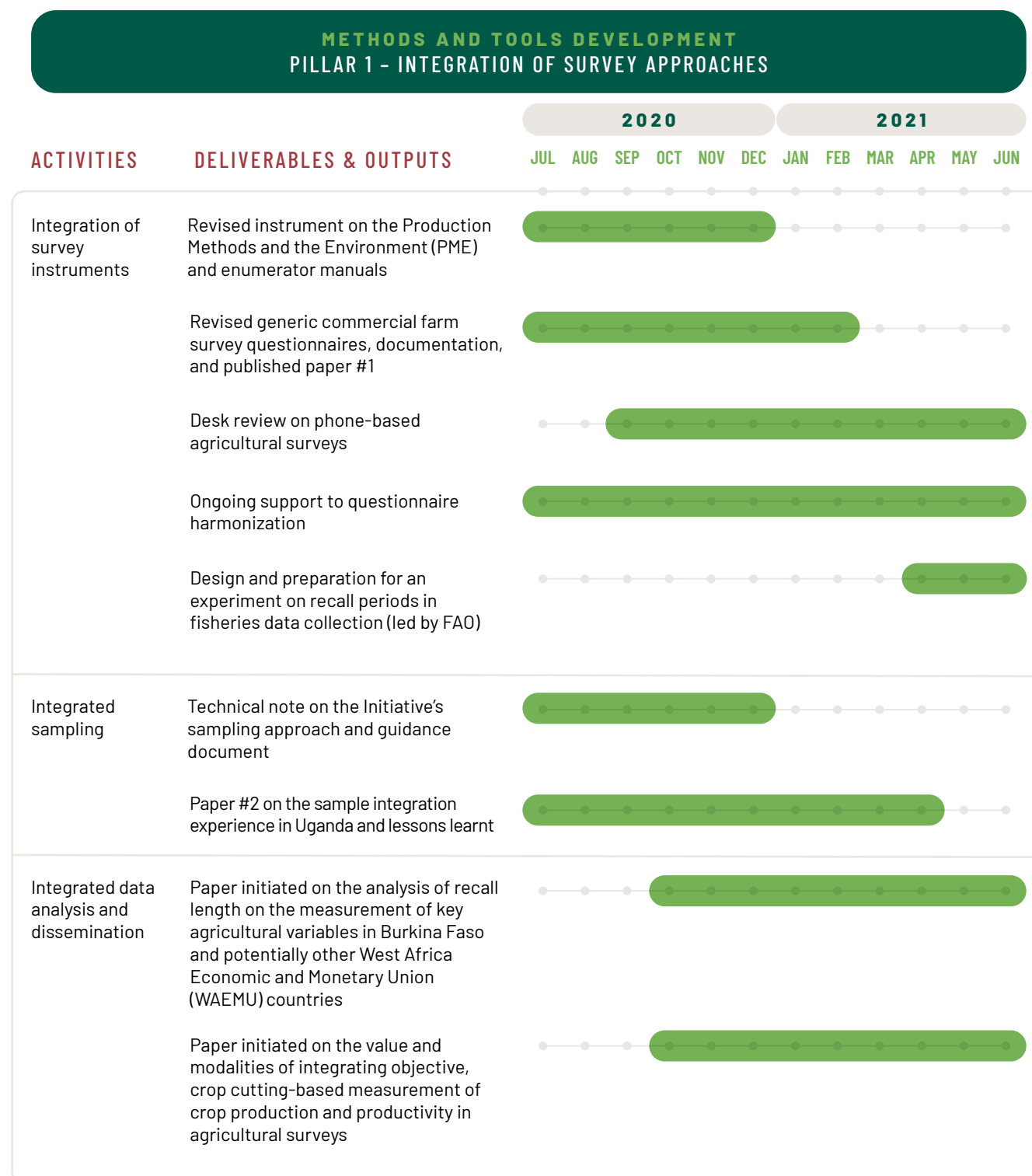
USE OF TECHNOLOGY, UPDATING OF METHODOLOGIES FOR MEASUREMENT, to improve the landscape of data on agricultural production processes, such as (i) the measurement and/or improvement of survey data in the areas of agricultural labor, non-labor inputs, damage and losses, land area, land tenure, soil fertility, climatological conditions, crop variety and post-harvest losses, (ii) the improved measurement of women's empowerment in agriculture, and (iii) the development of a survey management system.

PILLAR 3

INTEGRATION WITH OTHER DATA SOURCES, to further the value of agricultural survey data through integration with earth observation and other data sources, including administrative data.

A summary of the activities to be undertaken under each pillar is provided below; the corresponding timeline is listed in Table 2.

TABLE 3. INDICATIVE 50x2030 INITIATIVE METHODS AND TOOLS DEVELOPMENT ACTIVITIES: DELIVERABLES AND TENTATIVE TIMELINE, FY2021 (1 JULY 2020 TO 30 JUNE 2021)

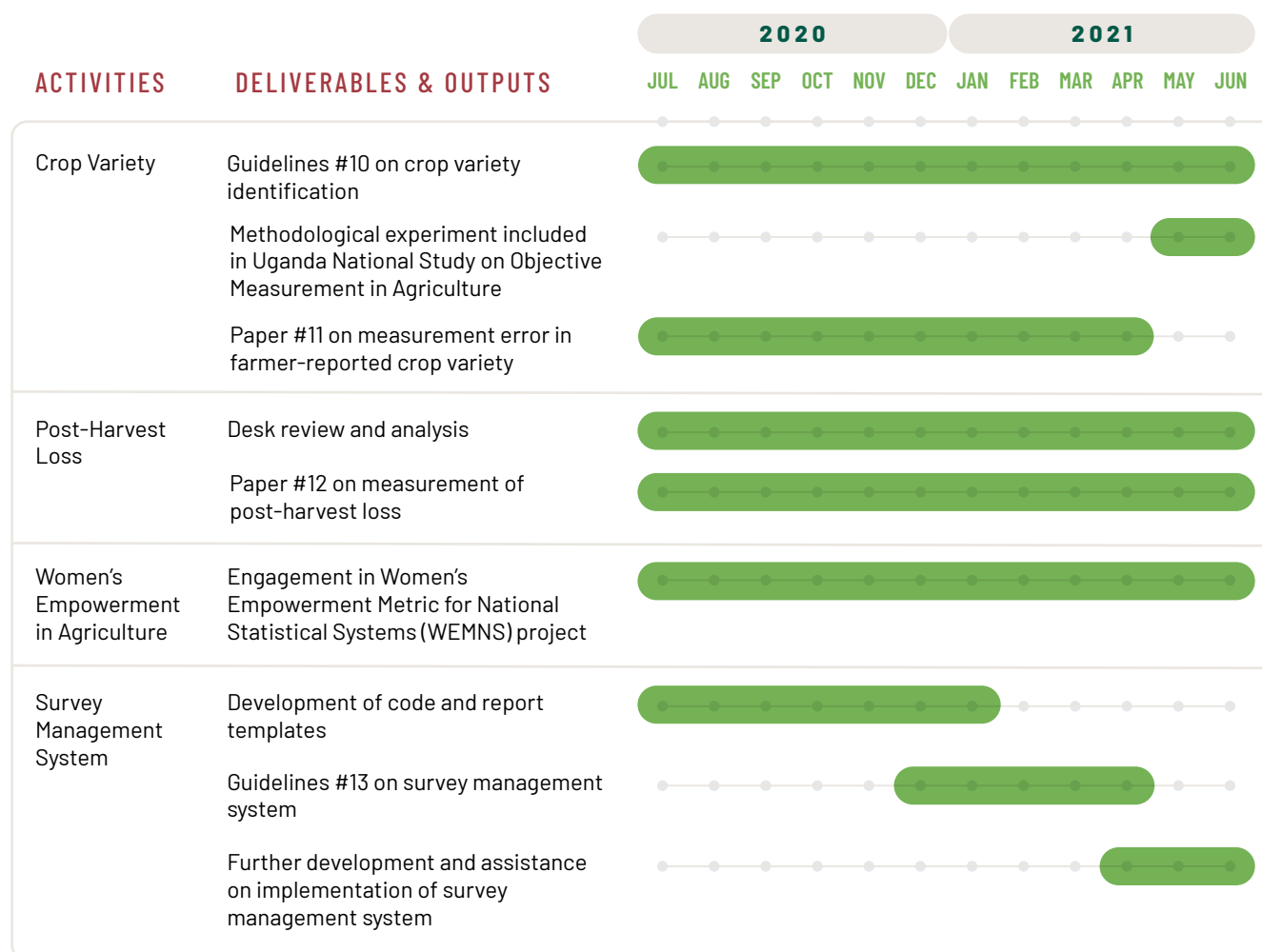


METHODS AND TOOLS DEVELOPMENT

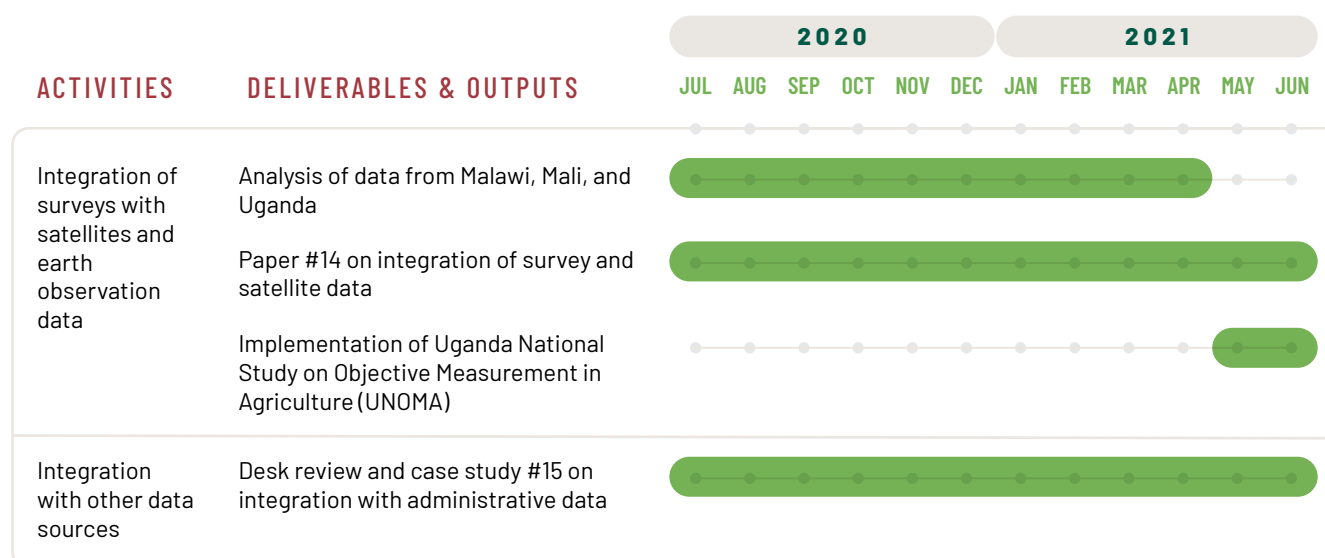
PILLAR 2 - USE OF TECHNOLOGY, UPDATING OF METHODOLOGIES FOR MEASUREMENT



(CONTINUED) PILLAR 2 - USE OF TECHNOLOGY, UPDATING OF METHODOLOGIES FOR MEASUREMENT



METHODS AND TOOLS DEVELOPMENT PILLAR 3 - INTEGRATION WITH OTHER DATA SOURCES



PROGRAM MANAGEMENT

The PMT is responsible for overall programmatic and financial oversight of the 50x2030 Initiative. Over the work plan period, the team will engage in a series of activities, under the guidance of the

Partnership Council, to ensure program delivery, financing, monitoring and visibility. The activities are summarized in Table 3 and in greater detail on the pages that follow.

TABLE 4. INDICATIVE 50x2030 INITIATIVE PROGRAM MANAGEMENT ACTIVITIES-DELIVERABLES AND TIMELINE, FY2021 (1 JULY 2020 TO 30 JUNE 2021)

ACTIVITIES	DELIVERABLES & OUTPUTS	2020						2021					
		JUL	AUG	SEP	OCT	NOV	DEC	JAN	FEB	MAR	APR	MAY	JUN
Development of documents and protocols	Country onboarding protocols (and updates)												
	Workplans (annual work plan, multi-year work plan)												
	Mid-year (Apr) and Annual (Sep) reports												
	Results Framework and M&E Plan												
	Country agreements												
Coordination of working groups activities	Relevant internal/external WG/task forces' activities reflected in the Initiative's work												
Coordination of structures (Partnership Council, program implementing agencies, TAG, etc.)	Identification of issues to be addressed, organization of meetings, consensus-building, preparation of materials, follow-up on decisions												
Documents (International Development Association-IDA, etc.)	Identification of joint country work with Agriculture and Food and Poverty and Equity Global Practices												
Outreach / advocacy activities	Advocacy materials												
	Updated website												



WORKING GROUPS AND PARTNERSHIPS

The Initiative fosters the establishment of subject matter Working Groups to support the design and implementation of its activities in key areas of work. The aim is to pool technical expertise and focused professional interests from diverse backgrounds to complement and enhance the Initiative's work, allowing for benchmarking and leading to progress and innovation.

The Methods and Tools Coordination Internal Working Group, comprised of staff from the implementing agencies and the PMT, has been ensuring the coordination of the methodological work of the Initiative since inception.

The Initiative will also engage in an analysis to identify tangible advantages of the Initiative's integrated survey approach, both in terms of its methodological and technical characteristics as well as its cost effectiveness.

50x2030 staff, from implementing agencies and the PMT, also participate

in working groups/interest groups/task forces outside the Initiative and will initiate or strengthen partnerships, particularly with organizations at the cutting-edge of the development of technologies for the collection, integration and use of data relevant to agriculture and natural resource management. The Initiative will coordinate at the country level with the second phase of the Global Strategy to improve Agricultural and Rural Statistics (GSARS) implemented under the leadership of FAO. The 50x2030 Initiative will also seek partnerships with key organizations to engage data users, advocate for data-informed decision-making, and leverage tools and platforms to promote data use.

TECHNICAL ADVISORY GROUP

The TAG is set up to provide technical advice and peer review services for the consideration of the Partnership Council. It reports to the PMT (and its Program Manager), which convenes and requests the TAG's services on behalf of the Partnership Council to ensure the strategic direction and implementation of the program are grounded in sound

technical decisions. The TAG will help ensure the Initiative pursues the highest quality standards in the delivery of its data collection, methods and tools development, and data use activities.

Over the work plan period, the PMT will ensure TAG members reach a common understanding of the Initiative and are up to date on the status of activities, agree on the objectives and their modus operandi and review the first set of key technical documents. Meetings might be complemented as needed by topic-specific virtual sessions to discuss either one of the Initiative's areas of work, or specific technical aspects.

KNOWLEDGE

Under the Data Production activities, Initiative data will be:

- generated in Armenia (first Quarter Survey round), Cambodia (CAS 2021), Ethiopia (Commercial Farm Survey), Georgia (four quarterly surveys), Nepal (Test Commercial Farms), Nigeria (GHS panel pilot), Senegal (two visits of EAA 2020-2021), Tanzania (NPS 2021-2022) and Uganda (second visit of AAS 2019, two visits of AAS 2020-2021 and ISP 2021)
- disseminated in Cambodia (CAS2020), Ethiopia (ESS4 and Commercial farms Survey), Malawi (5th IHSS), Nepal (Test Commercial Farms), Senegal (EAA 2019-2020) and Uganda (AAS2018, AAS2019, UNPS 2019-2020).

As stated above and outlined in the Annex, under the Methods and Tools Development activities, approximately

15 technical papers and new or updated guidelines will be published over the work plan period. In addition, Data Use activities aim to produce a comparative study (target date of June 2021) on conducting data ecosystem mapping through virtual or traditional (in-person) means. The ability to conduct this study largely depends on how the COVID-19 pandemic affects travel and business operations. This paper can be useful to the broader development sector.

Once more evidence from several countries becomes available, the Initiative will develop a paper on the use of survey data. Finally, Initiative-affiliated staff from the World Bank are on the core development team of the upcoming World Development Report 2021 on data.

CONFERENCES

The Initiative is planning a Global Data Use Conference in late 2021, to be conducted as a virtual conference if travel is restricted. The Conference will serve as a forum of discussion on how Initiative survey data can be and is being used to make informed decisions that facilitate progress towards achieving SDG targets 2.3 and 2.4.

The Initiative has submitted a proposed session for the UN World Data Forum, now postponed to October 2021, entitled, "From the Ground, Up. Improving Geospatial Modelling through a Collaborative Approach to Ground-Truthing".

Representatives from the Initiative's implementing agencies and PMT will attend relevant international meetings and conferences on Initiative-related

topics and/or those attended by countries, stakeholders and experts of interest to 50x2030 and where the progress and achievements of the Initiative can be presented and promoted.

RESOURCE MOBILIZATION

As the costs of the Initiative are shared by donors, philanthropic organizations, multilateral implementing partners, the private sector, partner countries and, potentially, other stakeholders, the continuous mobilization and diversification of resources from multiple sources is a key area of engagement of the PMT. The Initiative also encourages countries to gradually and progressively contribute to 50x2030's resources, either with their own government funding and/or from other national sources. All these activities are implemented under the strategic direction and advice of the Partnership Council.

Resource mobilization activities are devoted to strengthening relations with current donors and to working with new ones. The Initiative is also engaged in seeking additional resources from "non-traditional" donors and the PMT will identify and initiate relations with bodies and institutions that are interested in, or are of interest to, the Initiative. These could include other philanthropic organizations, private sector organizations, and partner countries themselves.

In addition, efforts are underway to leverage the World Bank's International

Development Association (IDA) as an additional funding source for countries. In this regard, there are ongoing discussions with the World Bank Agriculture and Food Global Practice (AG GP) on potential collaboration as part of their projects in Initiative countries, and with the Poverty and Equity Global Practice (POV GP), under the framework of the newly-supported IDA19 project, "Harmonizing and Improving Statistics in West Africa (HISWA)", which aims at helping the harmonization and strengthening of the statistical systems in seven West African countries³.

OUTREACH AND ADVOCACY

In FY2021, the outreach program will be dedicated to laying the foundations for stakeholder engagement, storytelling and the monitoring and evaluation of the Initiative. This will involve establishing basic communications materials, platforms and systems. A graphic designer will be engaged to help articulate a strong brand for the Initiative and to produce a series of basic collateral. That work will then be translated into the Initiative's most important means of external communication, its website. The aim is to equip the website with enhanced capacity to capture survey data as well as to monitor implementation. Finally, a contact and email management system will be established to facilitate targeted communications and campaigns. The PMT will develop a communication strategy for endorsement by the Partnership Council.

³ The project is aimed at supporting Burkina Faso, Cabo Verde, Côte d'Ivoire, Ghana, Liberia, Sierra Leone and Togo, as well as the African Union (AU) and the Economic Community of West African States (ECOWAS) in their efforts to deepen regional integration in Africa.

In terms of knowledge management, all knowledge and tools emerging from the Initiative will be showcased on the Initiative website and social media channels such that countries that do not qualify for participation can also access them. In addition, space will be created for countries in the initiative to voice their interest on specific issues and share knowledge and best practices during the annual regional roundtable meetings. Partnership Council members will also be engaged in agenda setting and knowledge sharing.

In FY2021, the Initiative will have a presence in the form of in-person (or virtual) events at international and regional fora.

COLLABORATIONS WITH THE PRIVATE SECTOR

The Initiative will establish partnerships with the private sector under the framework of resource mobilization, but also with a view to identifying technological and innovative opportunities for data-smart agriculture. It will continue its partnership with the competitively selected partner, Atlas AI, on the integration of surveys and satellite data for high-resolution mapping of crop type and estimation of crop yield.

Based on preliminary research aimed at profiling private sector engagement, activities will be further developed to identify (i) areas in which the private sector can benefit from the Initiative's

objectives and outputs; (ii) initial opportunities for corporate partnership; (iii) data or technological companies interested in the use and promotion of technological transfer; (iv) other sector companies interested in the Initiative's activities for other common benefits; and (iv) corporate social responsibility opportunities for private sector companies. The PMT will build on this initial research to propose selected relevant partnerships with the private sector, within the overall activities aimed at expanding, deepening and diversifying donor relations and resource mobilization capacity.

RISK MANAGEMENT

During most of the work plan period, it is expected that COVID-19 related measures may continue to restrict planned activities that have already been adjusted, under the assumption that fieldwork and travel will be limited, and that implementation may be slower than in an average year. The reorganization of the activities foresee (i) desk-based methodological research, where feasible; (ii) phone consultations and virtual meeting/workshops; (iii) the rescheduling of data production activities by means of a contingency plan designed to closely monitor and continuously adapt to evolving circumstances; (iv) the provision of remote support; and (v) the implementation of phone surveys, where feasible.

LOOKING FORWARD

This work plan foresees the onboarding of new countries and deepening engagement with the Initiative's pre-approved countries as more make the transition to the survey

programs. Building on that engagement in FY2020, the Initiative has defined goals and milestones to be captured in detail in the next annual work plan (FY2022). These include:

COUNTRY PROGRAM IMPLEMENTATION

- Preparation of program implementation plans in 19 countries
- Undertaking of surveys in 14 countries (cumulative since Initiative inception)
- Data analysis and dissemination in 10 countries
- Data ecosystem mapping reports completed for 11 countries

METHODS, TOOLS AND KNOWLEDGE DEVELOPMENT

- Finalization of eight survey instruments
- 9 technical research papers, guidelines and manuals produced
- 14 methodological experiments conducted

STRATEGY, GOVERNANCE AND COORDINATION

- Renewal of the TAG
- Implementation of country onboarding protocols
- Start of results framework reporting and the production of results-based communication materials
- Additional funding secured
- Enlarging the Partnership Council

ANNEX: 50x2030 TECHNICAL PAPERS PLANNED FOR FY2021

The papers below are planned to be completed between 1 July 2020 and 30 June 2021. Additional papers will be initiated in FY2021 and completed in FY2022. Each publication citation includes the activity domain and estimated date of completion in parentheses.

1. Desk review of commercial farm data collection methods and practices. (Integration of survey instruments; February 2021)
2. Documenting the integration experience in Uganda. (Integrated sampling; April 2021)
3. Measurement of time allocation and labor through physical activity sensor data. (Agricultural labor; June 2021)
4. Does sharing GPS-based land area prior to the administration of a comprehensive agriculture questionnaire affect farmer-reported data on agricultural inputs? (Non-labor inputs; March 2021)
5. Comparing GPS and satellite image-based area measurements (Land area; April 2021)
6. The relative accuracy of intercropped area computation based on farmer-reported information vis-à-vis comprehensive objective measurements of crop area coverage on intercropped plots. (Land area; June 2021)
7. Comparative assessment of the unified land tenure survey modules and gender-disaggregated dimensions of land tenure. (Land tenure; May 2021)
8. Analysis of the role of crop-specific soil suitability in productivity and technical efficiency. (Soil fertility; February 2021)
9. Application of machine learning methods to use ground-based and geospatial soil data to impute improved plot-level soil measures. Paper might include a possible application to explore the role of soil quality in explaining gender-based productivity gaps in Malawi. (Soil fertility; June 2021)
10. Guidelines for the integration of DNA fingerprinting in national surveys. (Crop variety; June 2021)
11. Measurement error in farmer-reported information on cultivated crop varieties and attributes vis-à-vis objective identification. (Crop variety; April 2021)
12. Determination of minimum loss levels and/or the integration of survey approaches with modelling to improve the estimation of losses. (Post-harvest losses; June 2021)
13. Guidelines for the implementation of the developed survey management system. (Survey management system; April 2021)
14. The integration of surveys and satellites for the estimation of agricultural production. (Integration of surveys with satellites and earth observation data; June 2021)
15. Case study on identifying challenges and potential methods of integration with administrative data in specific countries. (Integration with other data sources; May 2021)